

Product datasheet for **RC203047**

MED31 (NM_016060) Human Tagged ORF Clone

Product data:

Product Type: Expression Plasmids
Product Name: MED31 (NM_016060) Human Tagged ORF Clone
Tag: Myc-DDK
Symbol: MED31
Synonyms: 3110004H13Rik; CGI-125; Soh1
Mammalian Cell Selection: Neomycin
Vector: pCMV6-Entry (PS100001)
E. coli Selection: Kanamycin (25 ug/mL)
ORF Nucleotide Sequence: >RC203047 ORF sequence
Red=Cloning site Blue=ORF Green=Tags(s)

TTTTGTAATACGACTCACTATAGGGCGCCGGAATTCGTCGACTGGATCCGGTACCGAGGAGATCTGCC
GCC**CGATCGCC**

ATGGCCGCTGCTGCTCGCTATGGAGACAGATGATGCTGAAATCGACTTCGGTTTCAGTTGGAGTTGGAAT
TTGTGCAATGTTAGCCAACCAAATTACCTAATTTTCTTGCCAAAGAGGTTACTTCAAAGACAAAGC
TTTTGTTAATTATCTAAATACTTGCTTACTGGAAAGACCCAGAATATGCCAAGTATCTAAAGTACCT
CAGTGTTCACACATGTTAGAGCTGCTCCAATATGAACACTCCGAAAGGAGCTGGTGAATGCTCAGTGTG
CGAAATTTATTGATGAACAGCAGATTCTACATTGGCAGCACTATCCCGAAGCGGATGCGCCTCAGCA
AGCCTTGCGAGAGCAGCAACAGCAAATAACACATCGGGAAAA

ACGCGTACGCGGCCGCTCGAGCAGAAACTCATCTCAGAAGAGGATCTGGCAGCAAATGATATCCTGGATT
ACAAGGATGACGACGATAAGGTTTAA

Protein Sequence: >RC203047 protein sequence
Red=Cloning site Green=Tags(s)
MAAAVAMETDDAGNRLRFQLELEFVQCLANPNYLNFLAQRGYFKDKAFVNYLKYLWYWKDPEYAKYLKYP
QCLHMLELLQYEHFRKELVNAQCAKFIDEQQILHWQHYSRKRMRLLQALAEQQQNNSTSGK

TRTRPLEQKLISEEDLAANDILDYKDDDDKV

Chromatograms: https://cdn.origene.com/chromatograms/mk6434_f08.zip

Restriction Sites: SgfI-MluI



[View online »](#)

Cloning Scheme:


ACCN: NM_016060

ORF Size: 393 bp

OTI Disclaimer: The molecular sequence of this clone aligns with the gene accession number as a point of reference only. However, individual transcript sequences of the same gene can differ through naturally occurring variations (e.g. polymorphisms), each with its own valid existence. This clone is substantially in agreement with the reference, but a complete review of all prevailing variants is recommended prior to use. [More info](#)

OTI Annotation: This clone was engineered to express the complete ORF with an expression tag. Expression varies depending on the nature of the gene.

Components: The ORF clone is ion-exchange column purified and shipped in a 2D barcoded Matrix tube containing 10ug of transfection-ready, dried plasmid DNA (reconstitute with 100 ul of water).

- Reconstitution Method:**
1. Centrifuge at 5,000xg for 5min.
 2. Carefully open the tube and add 100ul of sterile water to dissolve the DNA.
 3. Close the tube and incubate for 10 minutes at room temperature.
 4. Briefly vortex the tube and then do a quick spin (less than 5000xg) to concentrate the liquid at the bottom.
 5. Store the suspended plasmid at -20°C. The DNA is stable for at least one year from date of shipping when stored at -20°C.

RefSeq: [NM_016060.3](#)

RefSeq Size: 1656 bp

RefSeq ORF: 396 bp

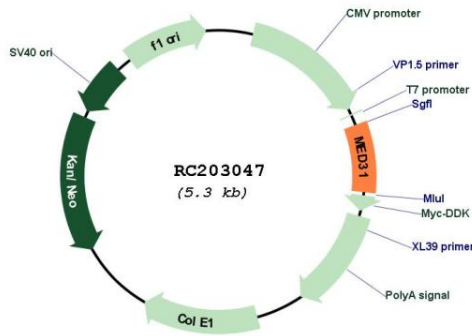
Locus ID: 51003

UniProt ID: [Q9Y3C7](#)

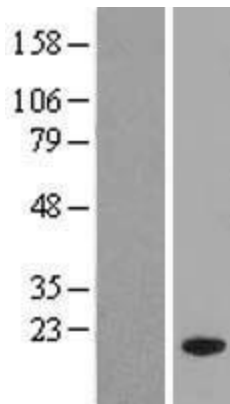
Cytogenetics: 17p13.1
Protein Families: Transcription Factors
MW: 15.8 kDa

Gene Summary: Component of the Mediator complex, a coactivator involved in the regulated transcription of nearly all RNA polymerase II-dependent genes. Mediator functions as a bridge to convey information from gene-specific regulatory proteins to the basal RNA polymerase II transcription machinery. Mediator is recruited to promoters by direct interactions with regulatory proteins and serves as a scaffold for the assembly of a functional preinitiation complex with RNA polymerase II and the general transcription factors.[UniProtKB/Swiss-Prot Function]

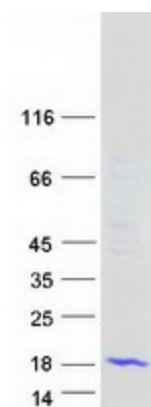
Product images:



Circular map for RC203047



Western blot validation of overexpression lysate (Cat# [LY414225]) using anti-DDK antibody (Cat# [TA50011-100]). Left: Cell lysates from untransfected HEK293T cells; Right: Cell lysates from HEK293T cells transfected with RC203047 using transfection reagent MegaTran 2.0 (Cat# [TT210002]).



Coomassie blue staining of purified MED31 protein (Cat# [TP303047]). The protein was produced from HEK293T cells transfected with MED31 cDNA clone (Cat# RC203047) using MegaTran 2.0 (Cat# [TT210002]).