

Product datasheet for **RC203045**

CCDC53 (WASHC3) (NM_016053) Human Tagged ORF Clone

Product data:

Product Type:	Expression Plasmids
Product Name:	CCDC53 (WASHC3) (NM_016053) Human Tagged ORF Clone
Tag:	Myc-DDK
Symbol:	CCDC53
Synonyms:	CCDC53; CGI-116
Mammalian Cell Selection:	Neomycin
Vector:	pCMV6-Entry (PS100001)
E. coli Selection:	Kanamycin (25 ug/mL)
ORF Nucleotide Sequence:	>RC203045 ORF sequence Red=Cloning site Blue=ORF Green=Tags(s)

TTTTGTAATACGACTCACTATAGGGCGGCCGGAATTCGTCGACTGGATCCGGTACCGAGGAGATCTGCC
GCC**CGATCGCC**

ATGGATGAGGACGGGCTTCTCTCATGGGGTCAGGCATAGACCTGACCAAGGTGCCAGCTATTCAACAGA
AAAGAACGGTGGCTTTTCTAAACCAATTTGTGGTGCACTGTACAGTTCCTCAACCGCTTTTCTACAGT
TTGTGAGGAGAACTGGCAGACCTTCACTTCGTATCCAACAAATTGAAACAACCTCTCAATATTTAGAT
GCAAAGTTGTATCTATCCAGGCCTAGATGATGTACAGTTGAAGTATCTCTTTAAATGTCACCAAGT
TCACAAATGGAGCACATCTGAAGCCACTTCAGAGCAACCACAGCAGAGCAGTACACAAGACTCTGGACT
ACAGGAAAGTGAAGTATCAGCAGAAAATATCTTAAGTGTAGCCAAGGATCCAAGATATGCCAGATATCTC
AAAATGGTTCAAGTGGGTGTACCAAGTGTGGCAATAAGAAACAAAATGATATCAGAAGGACTAGACCCAG
ATCTTCTTGAGAGGCCAGATGCTCCAGTGCCTGATGGCGAAAGTGAGAAAAGTGTAGAAGAAAGTTCAGA
TAGCGAATCTTCTTTTAGTGAT

ACGCGTACGCGGCCGCTCGAGCAGAACTCATCTCAGAAGAGGATCTGGCAGCAAATGATATCTGGATT
ACAAGGATGACGACGATAAGGTTTAA

Protein Sequence:	>RC203045 protein sequence Red=Cloning site Green=Tags(s)
-------------------	--

MDEDGLPLMGSGIDLTKVPAIQKRTVAFLNQFVVHTVQFLNRFSTVCEEKLADLSLRIQQIETTLNILD
AKLSSIPGLDDVTVEVSPLNVTSTNGAHPEATSEPPQSSSTQDSGLQESEVSAENILTVAKDPRIYARYL
KMOVGVPMVMAIRNKMISEGLDPDLLERPDAPVPDGESEKTVEESSDSESSFSD

TRTRPLEQKLISEEDLAANDILDYKDDDDKV

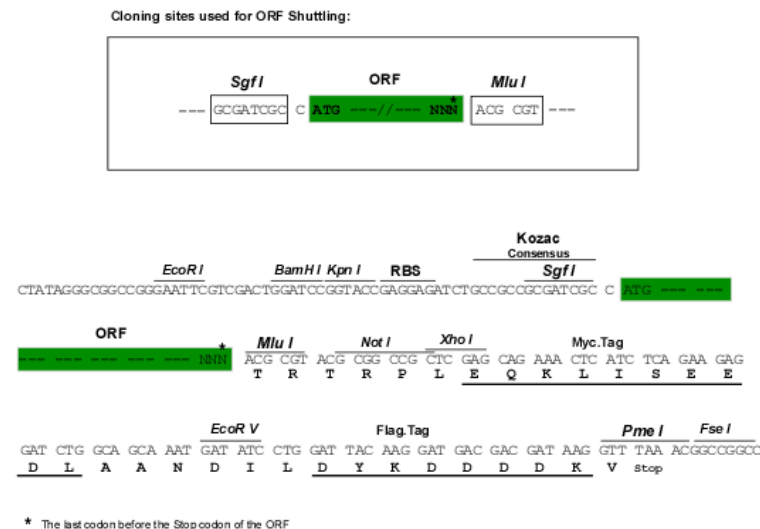


[View online »](#)

Chromatograms: https://cdn.origene.com/chromatograms/mk6435_e08.zip

Restriction Sites: Sgfl-MluI

Cloning Scheme:



ACCN: NM 016053

ORF Size: 582 bp

OTI Disclaimer: The molecular sequence of this clone aligns with the gene accession number as a point of reference only. However, individual transcript sequences of the same gene can differ through naturally occurring variations (e.g. polymorphisms), each with its own valid existence. This clone is substantially in agreement with the reference, but a complete review of all prevailing variants is recommended prior to use. [More info](#)

OTI Annotation: This clone was engineered to express the complete ORF with an expression tag. Expression varies depending on the nature of the gene.

Components: The ORF clone is ion-exchange column purified and shipped in a 2D barcoded Matrix tube containing 10ug of transfection-ready, dried plasmid DNA (reconstitute with 100 ul of water).

Reconstitution Method:

1. Centrifuge at 5,000xg for 5min.
2. Carefully open the tube and add 100ul of sterile water to dissolve the DNA.
3. Close the tube and incubate for 10 minutes at room temperature.
4. Briefly vortex the tube and then do a quick spin (less than 5000xg) to concentrate the liquid at the bottom.
5. Store the suspended plasmid at -20°C. The DNA is stable for at least one year from date of shipping when stored at -20°C.

RefSeq: [NM_016053.4](#)

RefSeq Size: 1015 bp

RefSeq ORF: 585 bp

Locus ID: 51019

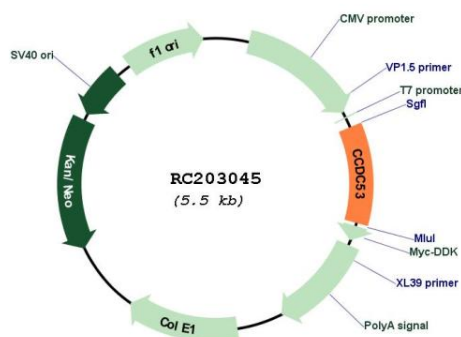
UniProt ID: Q9Y3C0

Cytogenetics: 12q23.2

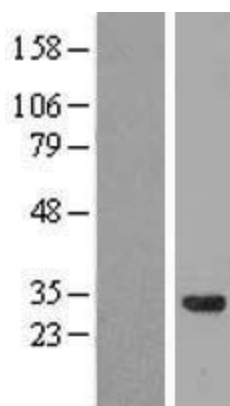
MW: 21.1 kDa

Gene Summary: Acts at least in part as component of the WASH core complex whose assembly at the surface of endosomes seems to inhibit WASH nucleation-promoting factor (NPF) activity in recruiting and activating the Arp2/3 complex to induce actin polymerization, and which is involved in regulation of the fission of tubules that serve as transport intermediates during endosome sorting (PubMed:19922875, PubMed:20498093).[UniProtKB/Swiss-Prot Function]

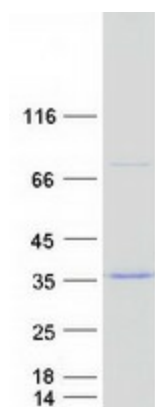
Product images:



Circular map for RC203045



Western blot validation of overexpression lysate (Cat# [LY414219]) using anti-DDK antibody (Cat# [TA50011-100]). Left: Cell lysates from untransfected HEK293T cells; Right: Cell lysates from HEK293T cells transfected with RC203045 using transfection reagent MegaTran 2.0 (Cat# [TT210002]).



Coomassie blue staining of purified WASHC3 protein (Cat# [TP303045]). The protein was produced from HEK293T cells transfected with WASHC3 cDNA clone (Cat# RC203045) using MegaTran 2.0 (Cat# [TT210002]).