

## Product datasheet for **RC203044**

### **NMD3 (NM\_015938) Human Tagged ORF Clone**

#### **Product data:**

Product Type:	Expression Plasmids
Product Name:	NMD3 (NM_015938) Human Tagged ORF Clone
Tag:	Myc-DDK
Symbol:	NMD3
Synonyms:	CGI-07
Mammalian Cell Selection:	Neomycin
Vector:	pCMV6-Entry (PS100001)
E. coli Selection:	Kanamycin (25 ug/mL)



[View online »](#)

**ORF Nucleotide Sequence:**

>RC203044 ORF sequence  
 Red=Cloning site Blue=ORF Green=Tags(s)

TTTTGTAATACGACTCACTATAGGGCGGCCGGAATTCGTCGACTGGATCCGGTACCGAGGAGATCTGCC  
 GCC**CGGATCGCC**

ATGGAGTATATGGCAGAATCCACCGACCGCAGCCCTGGACACATCTTGTGCTGTGAGTGTGGTGTCCGA  
 TAAGTCCAAATCCTGCCAATATTTGTGTGGCTGTTTGCAGAGTAAAGTGGACATCAGCCAAGGTATTCC  
 GAAACAAGTCTCGATTTCTGTTCTGCAAACAATGTCAAAGTATTTTCAACCACCAGGAAGTGGATACAG  
 TGTGCTTTAGAATCCAGGGAAGTCTTGTCTTGTGCTTAAAAAATCAAAGCCCCTCTGAGTAAGGTAC  
 GGCTTGTAGATGCAGGCTTTGTTGGACTGAGCCTCATTCTAAGAGACTTAAAGTAAACTGACTATTCA  
 GAAAGAGGTGATGAATGGTGTATCCTTCAACAAGTGTGTGGTGGATTATGTTGTTCACTCCAAATG  
 TGTGGAGATTGCCATAGAGTAGAAGCTAAGGATTTCTGGAAGGCTGTGATTCAAGTGAGGCAAAAGACTT  
 TGCATAAAAAAATTTCTACTATCTGGAACAGTTAATTCTGAAATATGGAATGCATCAGAATACACTTCG  
 TATCAAAGAGATTCATGATGGTCTGGATTTTTATTATTCTCAAACAACATGCTCAGAAGATGGTCGAA  
 TTTCTTCAAGTGTACAGTTCCCTGTAGATACAAAGCATCACAAGACTGATCTCTCAAGATATCCATAGTA  
 ACACATACAATTACAAAAGCACTTTTTCTGTGAAATTGTTCCAATATGCAAGGATAATGTTGTCTGTCT  
 GTCTCCAAAAGTGGCACAAAAGCCTGGGAAATATGAACCAGATTTGTGTGTATTTCGAGTAACCAGTGCC  
 ATTCACCTCATTGATCCAAAACCCCTACAAGTGGCAGATATTGATGGGAGCACTTTCTGGAGTACCCTT  
 TCAATAGTTTATGTCATCCCAAACAGCTAGAGGAGTTTATTGTGATGGAATGCAGCATAGTCCAAGATAT  
 AAAACGTGCTGCAGGTGCTGGAATGATATCAAAAAGCATAACCCTCGGGGAGTCTGGGTACAGAAGACA  
 TCTGAAATGAATACAGATAAACAGTATTTTGTCTACTCATTTGGGACATCTTCTAAATCCCGGAGACC  
 TGGTGTAGGGTTTATTGGCCAAGTAACTTAAATGATGAGCATGTCAACAAAATGAAGTACAGATAG  
 AGTTCCAGATGTGGTATTAATCAAGAAGAGCTATGACCGGACCAACGTCAGCGCTAGAAACTGGAAA  
 TTGAAAGAGCTTGAAGAGAGAGAGAAAACATGGATACAGATGATGAAAGCAATACCAAGATTTCTTG  
 AAGATCTTGAAGAAGATGAGGCAATTCGAAAAATGTCAACATTTACAGAGATTCAGCCATCCCTGTGGA  
 AAGTGACACCGATGATGAAGGAGCACCTCGAATTAGTCTGGCTGAGATGCTTGAAGACCTTCATATTTCC  
 CAAGATGCCACTGGTGAAGAAGTGCATCAATGCTGACA

**ACGCGT**ACGCGGCCGCTCGAGCAGAAACTCATCTCAGAAGAGGATCTGGCAGCAAATGATATCCTGGATT  
 ACAAGGATGACGACGATAAGGTTTAA

**Protein Sequence:**

>RC203044 protein sequence  
 Red=Cloning site Green=Tags(s)

MEYMAESTDRSPGHILCCECGVPISPNPANICVACLRSKVDISQGIKQVSI SFCKQCQRVFP PPGTWIQ  
 CALESRELLALCLKKIKAPLSKVRLLVDAGVWTEPHSKRLKVKLTIQKEVMNGAILQQVFVVDYVVSQSM  
 CGDCHRVEAKDFWKAVIQVRQKTLHKKTFYYLEQLILKYGMHNTLRILKEIHDGLDFYSSKQHAQKQME  
 FLQCTVPCRYKASQRLISQDIHSNTYNYKSTFSVEIVPICKDNVCLSPKLAQSLGNMNQICVCIRVTS  
 IHLIDPNTLQVADIDGSTFWSHPFNSLCHPKQLEEFIVMECSIVQDIKRAAGAGMISKKHTLGEVWVQKT  
 SEMNTDKQYFCRTHLGHLLNPGDLVLFGLANCLNDEHVNMNSDRVPDVL IKKSYDRTKRQRRRNWK  
 LKELARERENMDTDERQYQDFLEDLEDEAIRKNVNIYRDSAIPVESDTTDEGAPRISLAEMLEDLHIS  
 QDATGEEGASMLT

**TRTRPLEQKLI**SEEDLAANDILDYKDDDDKV

**Chromatograms:**

[https://cdn.origene.com/chromatograms/mk6569\\_b01.zip](https://cdn.origene.com/chromatograms/mk6569_b01.zip)

**Restriction Sites:**

Sgfl-Mlul

**Cloning Scheme:**


**ACCN:** NM\_015938

**ORF Size:** 1509 bp

**OTI Disclaimer:** The molecular sequence of this clone aligns with the gene accession number as a point of reference only. However, individual transcript sequences of the same gene can differ through naturally occurring variations (e.g. polymorphisms), each with its own valid existence. This clone is substantially in agreement with the reference, but a complete review of all prevailing variants is recommended prior to use. [More info](#)

**OTI Annotation:** This clone was engineered to express the complete ORF with an expression tag. Expression varies depending on the nature of the gene.

**Components:** The ORF clone is ion-exchange column purified and shipped in a 2D barcoded Matrix tube containing 10ug of transfection-ready, dried plasmid DNA (reconstitute with 100 ul of water).

- Reconstitution Method:**
1. Centrifuge at 5,000xg for 5min.
  2. Carefully open the tube and add 100ul of sterile water to dissolve the DNA.
  3. Close the tube and incubate for 10 minutes at room temperature.
  4. Briefly vortex the tube and then do a quick spin (less than 5000xg) to concentrate the liquid at the bottom.
  5. Store the suspended plasmid at -20°C. The DNA is stable for at least one year from date of shipping when stored at -20°C.

**RefSeq:** [NM\\_015938.5](#)

**RefSeq Size:** 2758 bp

**RefSeq ORF:** 1512 bp

**Locus ID:** 51068

**UniProt ID:** [Q96D46](#)

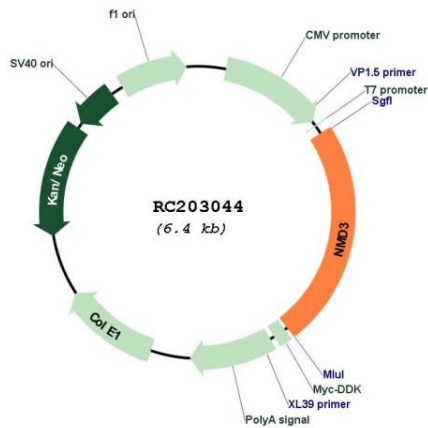
**Cytogenetics:** 3q26.1

**Domains:** NMD3

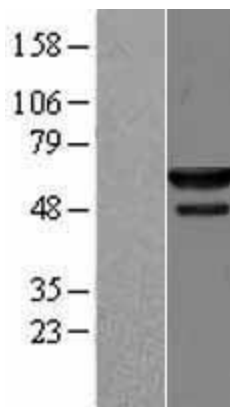
**MW:** 57.6 kDa

**Gene Summary:** Ribosomal 40S and 60S subunits associate in the nucleolus and are exported to the cytoplasm. The protein encoded by this gene is involved in the passage of the 60S subunit through the nuclear pore complex and into the cytoplasm. Several transcript variants exist for this gene, but the full-length nature of only two have been described to date. [provided by RefSeq, Feb 2016]

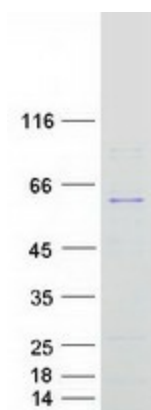
**Product images:**



Circular map for RC203044



Western blot validation of overexpression lysate (Cat# [LY414293]) using anti-DDK antibody (Cat# [TA50011-100]). Left: Cell lysates from untransfected HEK293T cells; Right: Cell lysates from HEK293T cells transfected with RC203044 using transfection reagent MegaTran 2.0 (Cat# [TT210002]).



Coomassie blue staining of purified NMD3 protein (Cat# [TP303044]). The protein was produced from HEK293T cells transfected with NMD3 cDNA clone (Cat# RC203044) using MegaTran 2.0 (Cat# [TT210002]).