

Product datasheet for RC203037

CHST11 (NM_018413) Human Tagged ORF Clone

Product data:

Product Type:	Expression Plasmids
Product Name:	CHST11 (NM_018413) Human Tagged ORF Clone
Tag:	Myc-DDK
Symbol:	CHST11
Synonyms:	C4ST; C4ST-1; C4ST1; HSA269537; OCBMD
Mammalian Cell Selection:	Neomycin
Vector:	pCMV6-Entry (PS100001)
E. coli Selection:	Kanamycin (25 ug/mL)
ORF Nucleotide Sequence:	>RC203037 ORF sequence Red=Cloning site Blue=ORF Green=Tags(s)

TTTTGTAATACGACTCACTATAGGGCGCCGGGAATTCGTCGACTGGATCCGGTACCGAGGAGATCTGCC
GCC**CGGATCGCC**

ATGAAGCCAGCGCTGCTGGAAGTGATGAGGATGAACAGAATCTGCCGGATGGTGCTGGCCACTTGCTTGG
GATCCTTTATCCTGGTCATCTTCTATTTCCAAAGTATGTTGCACCCAGTCATGCGGAGGAATCCCTTTGG
TGTGGACATCTGCTGCCGAAGGGTCCCGAAGCCCCCGCAGGAAGTCTACAACCAATCCAGCTGGAG
CTCTCAAACACTGCTGTCTGCACAGATGCGGGGGACCAGGTGACAGACACGTGCCGAGCCAACAGCG
CCACAAGCCGTAAGCGGAGGGTCTGACCCCAACGACCTGAAGCACTTGGTGGTGGATGAGGACCACGA
GCTCATCTACTGCTACGTGCCCAAGGTGGCCTGCACCAACTGGAAGCGGCTCATGATGGTCTGACCGGG
CGGGGGAAGTACAGCGACCCCATGGAGATCCCGGCCAACGAGGCACACGTCTCCGCCAACCTGAAGACCC
TGAACCACTACAGCATCCAGAAATCAACCACCGCTTGAAAAGCTACATGAAGTTCCTGTTTGTCCGGGA
GCCCTTCGAGAGGCTAGTGTCCGCCTACCGCAACAAGTTCACCCAGAAGTACAACATCTCCTTCCACAAG
CGGTACGGCACCAGATCATCAAACGCCAGCGGAAGAAGCCACCCAGGAGGCCCTGCGCAAAGGGGACG
ATGTCAAATTCGAGGAGTTTGTGGCCTATCTCATCGACCCACACACCCAGCGGGAGGAGCCTTTCAACGA
ACACTGGCAAACCGTCTACTCACTCTGCCATCCCTGCCACATCCACTATGACCTCGTGGCAAGTACGAG
ACACTGGAAGAGGATTCTAATTACGTCCTGCAGCTGGCAGGAGTGGCAGCTACCTGAAGTTCACCACT
ATGCAAAGTCTACGAGAAGTACTGATGAAATGACCACAGAATTCTTCCAGAACATCAGCTCAGAGCACCA
AACGCAGCTGTACGAAGTCTACAAACTCGATTTTTTAATGTTCAATTACTCAGTGCCAAGCTACCTGAAA
TTGGAA

ACGCGTACGCGGCCGCTCGAGCAGAAACTCATCTCAGAAGAGGATCTGGCAGCAAATGATATCCTGGATT
ACAAGGATGACGACGATAAGGTTTAA



[View online »](#)

Protein Sequence: >RC203037 protein sequence
Red=Cloning site Green=Tags(s)

MKPALLEVMRMNRI CRMVLATCLGSFILVIFYFQSM LHPVMRRNPF GVDICCRKGSRSPLQELYNPIQLE
 LSNTAVLHQMRDQVTDTCRANSATSRKRRVLPNDL KHLVVDDELHYCYVVKVACTNWKRLMMVL TG
 RGKYSDPMEIPANEAHVSANL KTLNQYSIPEINHRLKSYMKFLFVREPFERLVSAYRNKFTQKYNI SFHK
 RYGTKI IKRQRKNATQEALRKGDDVKFE EFVAYLIDPHTQREEPFNEHWQT VVYSLCHPCHIHYDLVGKYE
 TLEEDSNVYLQLAGVGSYLKFP TYAKSTRTTDEMTTEFFQNISSEHQ TQLYEVYKLDFLMFNYSVPSYLK
 LE

TRTRPLEQKLISEEDLAANDILDYKDDDDKV

Chromatograms: https://cdn.origene.com/chromatograms/mk6435_d07.zip

Restriction Sites: SgfI-MluI

Cloning Scheme:



ACCN: NM_018413

ORF Size: 1056 bp

OTI Disclaimer: The molecular sequence of this clone aligns with the gene accession number as a point of reference only. However, individual transcript sequences of the same gene can differ through naturally occurring variations (e.g. polymorphisms), each with its own valid existence. This clone is substantially in agreement with the reference, but a complete review of all prevailing variants is recommended prior to use. [More info](#)

OTI Annotation: This clone was engineered to express the complete ORF with an expression tag. Expression varies depending on the nature of the gene.

Components: The ORF clone is ion-exchange column purified and shipped in a 2D barcoded Matrix tube containing 10ug of transfection-ready, dried plasmid DNA (reconstitute with 100 ul of water).

Reconstitution Method:

1. Centrifuge at 5,000xg for 5min.
2. Carefully open the tube and add 100ul of sterile water to dissolve the DNA.
3. Close the tube and incubate for 10 minutes at room temperature.
4. Briefly vortex the tube and then do a quick spin (less than 5000xg) to concentrate the liquid at the bottom.
5. Store the suspended plasmid at -20°C. The DNA is stable for at least one year from date of shipping when stored at -20°C.

RefSeq: [NM_018413.6](#)

RefSeq Size: 5768 bp

RefSeq ORF: 1059 bp

Locus ID: 50515

UniProt ID: [Q9NPF2](#)

Cytogenetics: 12q23.3

Domains: Sulfotransfer2

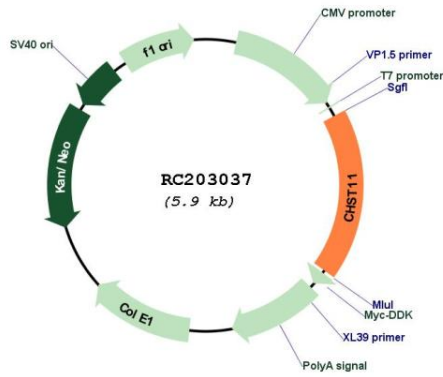
Protein Families: Transmembrane

Protein Pathways: Chondroitin sulfate biosynthesis, Sulfur metabolism

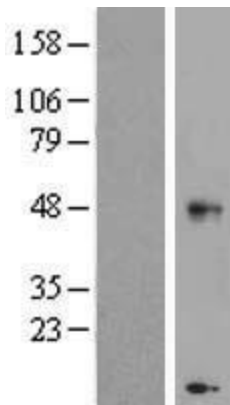
MW: 41.6 kDa

Gene Summary: The protein encoded by this gene belongs to the sulfotransferase 2 family. It is localized to the golgi membrane, and catalyzes the transfer of sulfate to position 4 of the N-acetylgalactosamine (GalNAc) residue of chondroitin. Chondroitin sulfate constitutes the predominant proteoglycan present in cartilage, and is distributed on the surfaces of many cells and extracellular matrices. A chromosomal translocation involving this gene and IgH, t(12;14)(q23;q32), has been reported in a patient with B-cell chronic lymphocytic leukemia. Alternatively spliced transcript variants encoding different isoforms have been found for this gene. [provided by RefSeq, Aug 2011]

Product images:



Circular map for RC203037



Western blot validation of overexpression lysate (Cat# [LY413068]) using anti-DDK antibody (Cat# [TA50011-100]). Left: Cell lysates from untransfected HEK293T cells; Right: Cell lysates from HEK293T cells transfected with RC203037 using transfection reagent MegaTran 2.0 (Cat# [TT210002]).