

## Product datasheet for **RC203026**

### SEC22C (NM\_032970) Human Tagged ORF Clone

#### Product data:

|                           |   |
|---------------------------|---|
| Product Type:             | Expression Plasmids   |
| Product Name:             | SEC22C (NM_032970) Human Tagged ORF Clone                         |
| Tag:                      | Myc-DDK   |
| Symbol:                   | SEC22C  |
| Synonyms:                 | SEC22L3   |
| Mammalian Cell Selection: | Neomycin  |
| Vector:                   | pCMV6-Entry (PS100001)  |
| E. coli Selection:        | Kanamycin (25 ug/mL)  |
| ORF Nucleotide Sequence:  | >RC203026 ORF sequence<br>Red=Cloning site Blue=ORF Green=Tags(s) |

TTTTGTAATACGACTCACTATAGGGCGGCCGGAATTCGTCGACTGGATCCGGTACCGAGGAGATCTGCC  
GCC**CGATCGCC**

ATGTCCGTGATCTTTTTGCCTGCGTGGTACGGGTAAGGGATGGACTGCCCCTCTCAGCCTCTACTGATT  
TTTACCACACCCAAGATTTTTGGAATGGAGGAGACGGCTCAAGAGTTTAGCCTTGCGACTGGCCAGTA  
TCCAGGTCGAGGTTCTGCAGAAGTTGTGACTTTAGTATACATTTTTCTTTTCGGGGACGTGGCCTGC  
ATGGCTATCTGCTCCTGCCAGTGTCCAGCAGCCATGGCCTTCTGCTTCTGGAGACCCTGTGGTGGGAAT  
TCACAGCTTCTATGACACTACCTGCATTGGCCTAGCCTCCAGGCCATACGCTTTTCTTGAGTTTGACAG  
CATCATTAGAAAAGTGAAGTGGCATTAACTATGTAAGTTCCTCTCAGATGGAGTGCAGCTTGGAAAAA  
ATTCAGGAGGAGCTCAAGTTCAGCCTCCAGCGTTTCTACTCTGGAGGACACAGATGTGGCAAATGGGG  
TGATGAATGGTCACACCCGATGCACTTGGAGCCTGCTCCTAATTTCCGAATGGAACCAAGTGCAGCCCT  
GGGTATCCTCTCCCTCATTCTCAACATCATGTGTGCTGCCCTGAATCTCATTGAGGAGTTACCTTGCA  
GAACATTCTTTACAGGTTGCCATGAGGAAATGGAAACATTCTGGCTTTTCTTGTCTTTTCGTAGCCT  
GCATTTTCCAGTGTTATTTGTACCTGTTCTACAGTCCAGCCAGGACTATGAAGTGGTGCATTATGCTGCT  
CTTTATTTGCCTGGGCAACATGTACCTGCACGGCTGAGGAACCTCTGGCAAATCCTTTTCCACATAGGA  
GTGGCTTTTCTGTCTTATATCAGATACTAACAAAGGCAGCTTCAGGAGAAGCAGTCTGACTGTGGAGTA

**ACGCGT**ACGCGGCCGCTCGAGCAGAAACTCATCTCAGAAGAGGATCTGGCAGCAAATGATATCCTGGATT  
ACAAGGATGACGACGATAAGGTTTAA



[View online »](#)

**Protein Sequence:** >RC203026 protein sequence  
Red=Cloning site Green=Tags(s)

MSVIFACVVRVVDGLPLSASTDFYHTQDFLEWRRRLKSLALRLAQYPGRGSAEGCDFSIHFSSFGDVAC  
 MAICSCQCPAAMAFCFLETLWWEFTASYDTTCIGLASRPYAFLEFDSIIQVKWHFNYSVSSQMECSLEK  
 IQEELKLQPPAVLTLEDTDVANGVMNGHTPMHLEPAPNFRMEPVTALGILSLILNIMCAALNLIRGVHLA  
 EHSLQVAHEEIGNILAFVLPFVACIFQCYLELYFSPARTMKVVLMLLFIICLGNMYLHGLRNLWQILFHIG  
 VAFLSSYQILTRQLQEKQSDCGV

TRTRPLEQKLISEEDLAANDILDYKDDDDKV

**Chromatograms:** [https://cdn.origene.com/chromatograms/mk6412\\_d08.zip](https://cdn.origene.com/chromatograms/mk6412_d08.zip)

**Restriction Sites:** SgfI-MluI

**Cloning Scheme:**



**ACCN:** NM\_032970

**ORF Size:** 909 bp

**OTI Disclaimer:** The molecular sequence of this clone aligns with the gene accession number as a point of reference only. However, individual transcript sequences of the same gene can differ through naturally occurring variations (e.g. polymorphisms), each with its own valid existence. This clone is substantially in agreement with the reference, but a complete review of all prevailing variants is recommended prior to use. [More info](#)

**OTI Annotation:** This clone was engineered to express the complete ORF with an expression tag. Expression varies depending on the nature of the gene.

**Components:** The ORF clone is ion-exchange column purified and shipped in a 2D barcoded Matrix tube containing 10ug of transfection-ready, dried plasmid DNA (reconstitute with 100 ul of water).

**Reconstitution Method:**

1. Centrifuge at 5,000xg for 5min.
2. Carefully open the tube and add 100ul of sterile water to dissolve the DNA.
3. Close the tube and incubate for 10 minutes at room temperature.
4. Briefly vortex the tube and then do a quick spin (less than 5000xg) to concentrate the liquid at the bottom.
5. Store the suspended plasmid at -20°C. The DNA is stable for at least one year from date of shipping when stored at -20°C.

**RefSeq:** [NM\\_032970.4](#)

**RefSeq Size:** 6416 bp

**RefSeq ORF:** 912 bp

**Locus ID:** 9117

**UniProt ID:** [Q9BRL7](#)

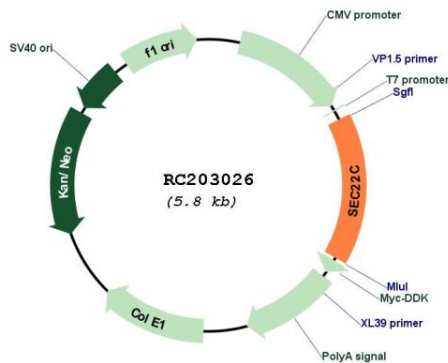
**Cytogenetics:** 3p22.1

**Protein Families:** Transmembrane

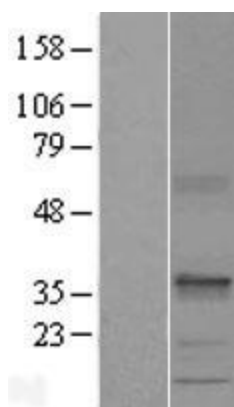
**MW:** 34.3 kDa

**Gene Summary:** This gene encodes a member of the SEC22 family of vesicle trafficking proteins. The encoded protein is localized to the endoplasmic reticulum and may play a role in the early stages of ER-Golgi protein trafficking. Alternatively spliced transcript variants encoding multiple isoforms have been observed for this gene. [provided by RefSeq, Jan 2011]

### Product images:



Circular map for RC203026



Western blot validation of overexpression lysate (Cat# [LY409854]) using anti-DDK antibody (Cat# [TA50011-100]). Left: Cell lysates from untransfected HEK293T cells; Right: Cell lysates from HEK293T cells transfected with RC203026 using transfection reagent MegaTran 2.0 (Cat# [TT210002]).