

Product datasheet for **RC203025**

ZNF397 (NM_032347) Human Tagged ORF Clone

Product data:

Product Type:	Expression Plasmids
Product Name:	ZNF397 (NM_032347) Human Tagged ORF Clone
Tag:	Myc-DDK
Symbol:	ZNF397
Synonyms:	ZNF47; ZSCAN15
Mammalian Cell Selection:	Neomycin
Vector:	pCMV6-Entry (PS100001)
E. coli Selection:	Kanamycin (25 ug/mL)
ORF Nucleotide Sequence:	>RC203025 ORF sequence Red=Cloning site Blue=ORF Green=Tags(s)

TTTTGTAATACGACTCACTATAGGGCGGCCGGAATTCGTCGACTGGATCCGGTACCGAGGAGATCTGCC
GCC**CGCATCGCC**

ATGGCTGTGGAATCTGGAGTGATTTCAACCCTGATACCTCAGGATCCTCCGGAACAAGAACTAATACTAG
TGAAAGTAGAAGATAACTTTTCTGGGATGAGAAATTTAAGCAGAATGGGAGTACTCAATCCTGCCAAGA
ATTGTTTCGTAGCAATTCAGAAAATTTGCTACCAGGAGACACCTGGGCCCGGGAGGCTCTGAGCCGA
CTCCAGGAACTTTGCTATCAGTGGCTAATGCCAGAGTTGCACACAAGGAGCAGATCTTAGAACTGCTGG
TACTGGAGCAGTTCCTGAGCATTCTGCCTGAGGAGCTGCAGATCTGGGTTGAGCAACATAATCCAGAAAG
CGGCGAGGAAGCTGTGACCCTGTTGGAGGATTTAGAGAGGGAGTTTGATGACCCAGGGCAGCAGGTCCCA
GCTAGTCCACAGGGACCAGCAGTGCCATGGAAGGATTTAACATGTCTCAGAGCATCCCAAGAGTCAACAG
ACATCCACCTCCAGCCCTTAAAGACACAGCTGAAATCCTGGAAACCATGCCTTTCCCTAAAAGTGATTG
TGAGAACAGTGAACAGCAACAAAAGAGGGCATCTCAGAAGAAAATCACAGGGACTCCCTCAGGAACCT
TCATTTGAGGAATTAAGTTGTCCAGACCTCCCAAAGCTTCTTCAGCTATCCGTTGGGAATGTGTTTCTC
CAGGAAGTTTTCCCGCGATATCATAGCTGCTGAGGCTACACATTCAACAATTTCTGCTTTGCCATCAA
CACTTTGCCAGCCACCATCTGCCATCTAAAAATGTGAATAGAAAGTATTTTTCC

ACGCGTACGCGGCCGCTCGAGCAGAAACTCATCTCAGAAGAGGATCTGGCAGCAAATGATATCCTGGATT
ACAAGGATGACGACGATAAGGTTTAA



[View online »](#)

Protein Sequence: >RC203025 protein sequence
 Red=Cloning site Green=Tags(s)

MAVESGVISTLIPQDPPEQELILVKVEDNFSWDEKFKQNGSTQSCQELFRQQFRKFCYQETPGPREALSRLQELCYQWLMPELHTKEQILELLVLEQFLSILPEELQIWWQHNPESGEEAVTLLEDLEREFDDPGQVVPASPOGPAVPWKDLTCLRASQESTDIHLQPLKTQLKSWKPCLSPKSDCENSETATKEGISEEKSQGLPQEPSFRGIKLSRPPKASSAIRWECVSPGSPGDIIAAEATHSTISCFAINLTPATILPSKNVNRKYFS

TRTRPLEQKLISEEDLAANDILDYKDDDDKV

Chromatograms: https://cdn.origene.com/chromatograms/mk6079_a08.zip

Restriction Sites: SgfI-MluI

Cloning Scheme:

Cloning sites used for ORF Shuttling:



* The last codon before the Stop codon of the ORF

ACCN: NM_032347

ORF Size: 825 bp

OTI Disclaimer: The molecular sequence of this clone aligns with the gene accession number as a point of reference only. However, individual transcript sequences of the same gene can differ through naturally occurring variations (e.g. polymorphisms), each with its own valid existence. This clone is substantially in agreement with the reference, but a complete review of all prevailing variants is recommended prior to use. [More info](#)

OTI Annotation: This clone was engineered to express the complete ORF with an expression tag. Expression varies depending on the nature of the gene.

Components: The ORF clone is ion-exchange column purified and shipped in a 2D barcoded Matrix tube containing 10ug of transfection-ready, dried plasmid DNA (reconstitute with 100 ul of water).

Reconstitution Method:

1. Centrifuge at 5,000xg for 5min.
2. Carefully open the tube and add 100ul of sterile water to dissolve the DNA.
3. Close the tube and incubate for 10 minutes at room temperature.
4. Briefly vortex the tube and then do a quick spin (less than 5000xg) to concentrate the liquid at the bottom.
5. Store the suspended plasmid at -20°C. The DNA is stable for at least one year from date of shipping when stored at -20°C.

RefSeq: [NM_032347.3](#)

RefSeq Size: 1494 bp

RefSeq ORF: 828 bp

Locus ID: 84307

UniProt ID: [Q8NF99](#)

Cytogenetics: 18q12.2

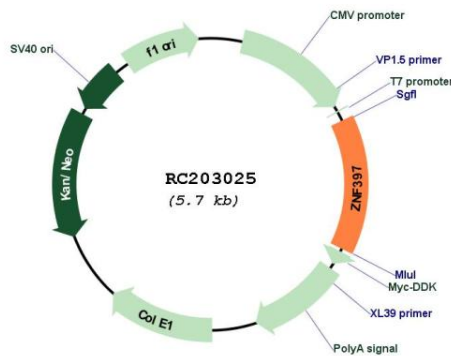
Domains: LER

Protein Families: Transcription Factors

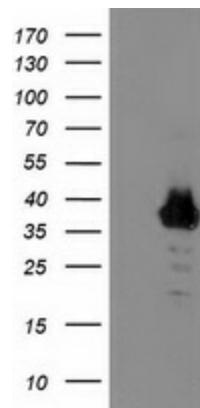
MW: 31.1 kDa

Gene Summary: This gene encodes a protein with a N-terminal SCAN domain, and the longer isoform contains nine C2H2-type zinc finger repeats in the C-terminal domain. The protein localizes to centromeres during interphase and early prophase, and different isoforms can repress or activate transcription in transfection studies. Multiple transcript variants encoding different isoforms have been found for this gene. Additional variants have been described, but their biological validity has not been determined. [provided by RefSeq, Oct 2009]

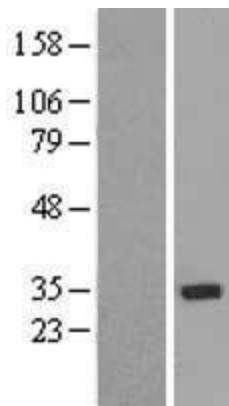
Product images:



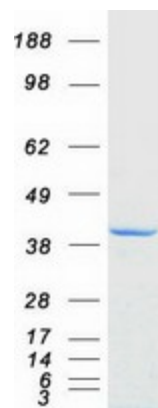
Circular map for RC203025



HEK293T cells were transfected with the pCMV6-ENTRY control (Cat# [PS100001], Left lane) or pCMV6-ENTRY ZNF397 (Cat# RC203025, Right lane) cDNA for 48 hrs and lysed. Equivalent amounts of cell lysates (5 ug per lane) were separated by SDS-PAGE and immunoblotted with anti-ZNF397(Cat# [TA503687]). Positive lysates [LY410184] (100ug) and [LC410184] (20ug) can be purchased separately from OriGene.



Western blot validation of overexpression lysate (Cat# [LY410184]) using anti-DDK antibody (Cat# [TA50011-100]). Left: Cell lysates from untransfected HEK293T cells; Right: Cell lysates from HEK293T cells transfected with RC203025 using transfection reagent MegaTran 2.0 (Cat# [TT210002]).



Coomassie blue staining of purified ZNF397 protein (Cat# [TP303025]). The protein was produced from HEK293T cells transfected with ZNF397 cDNA clone (Cat# RC203025) using MegaTran 2.0 (Cat# [TT210002]).