

Product datasheet for **RC203023**

CORO1B (NM_020441) Human Tagged ORF Clone

Product data:

Product Type:	Expression Plasmids
Product Name:	CORO1B (NM_020441) Human Tagged ORF Clone
Tag:	Myc-DDK
Symbol:	CORO1B
Synonyms:	CORONIN-2
Mammalian Cell Selection:	Neomycin
Vector:	pCMV6-Entry (PS100001)
E. coli Selection:	Kanamycin (25 ug/mL)



[View online »](#)

ORF Nucleotide Sequence:

>RC203023 ORF sequence
 Red=Cloning site Blue=ORF Green=Tags(s)

TTTTGTAATACGACTCACTATAGGGCGGCCGGAATTCGTCGACTGGATCCGGTACCGAGGAGATCTGCC
 GCC**GCGATCGCC**

ATGTCCTTCCGCAAAGTGGTCCGGCAGAGCAAATTCGGCATGTGTTCCGGCAGCCGGTCAAGAACGACC
 AGTGCTATGAGGACATTCGCGTGTCCCGTGTACTGGGACAGCACCTTCTGCGCCGTCAACCCCAAGTT
 CCTGGCGGTGATTGTGGAGGCCAGTGGAGGGGTGCCTTCTGGTGTCCCCCTAAGCAAGACGGGCCGC
 ATTGACAAGGCCTACCCGACGGTGTGTGGGCACACGGGACCTGTCTGGACATCGACTGGTGTCTCACA
 ACGACGAAGTCATAGCCAGCGGCTCGGAGGACTGCACGGTCATGGTGTGGCAGATCCCAGAGAACGGGT
 GACCTCCCGCTGACAGAGCCGGTGGTGTACTGGAGGGGCACACCAAGCGAGTGGGCATCATCGCTGG
 CACCCACGGCCGAAACGTGCTGCTCAGTGCAGGCTGCGACAACGTGGTACTCATCTGGAATGTGGCA
 CAGCGGAGGAGCTGTACCGCTGGACAGCTGCACCTGACCTCATCTACAATGTCAGCTGGAACCACAA
 TGGCAGCTGTTTGTCTCAGCATGCAAGGACAAGAGCGTGCGCATCATCGACCCCGTCGGGGCACCTG
 GTGGCAGAGCGGAGAAGGCTCATGAGGGGGCCCGCCATGCGGGCCATCTTCTGGCAGATGGCAAGG
 TGTTACCCACAGGCTTACGCCGAATGAGCGAGCGGCAGCTGGCGCTCTGGGACCCAGAAAACCTCGAGGA
 ACCCATGGCCCTGCAGGAAGTGGACTCGAGCAACGGGGCCCTGCTGCCCTTCTACGACCCCGACACCA
 GTGGTCTACGCTGCGGCAAGGGTACTCCAGCATCCGGTACTTTGAGATCACAGAGGAGCTCCCTACA
 TCCACTTCTGAACACGTTACCCAGCAAGGAGCCGAGCGGGGTATGGCAGCATGCCAAAGCGGGGCT
 GGAGGTGAGCAAGTGGGAGATCGCCCGTTCTACAAATGCATGAGCGCAAGTGTGAGCCATCGTCATG
 ACTGTGCCAAGAAAGTCGACCTCTCCAGGATGATCTGTACCCGACACAGCCGGGCCGAGGCAGCCC
 TGGAGGCTGAGGAGTGGGTGAGCGGGCGGATGCCGACCCGATCCTCATCTCACTGCGGGAGGCATCGT
 GCCCAGCAAGCAGCGGGACCTGAAGATCAGCCGCGCAACGTGTTGTCTGACAGCCGCGCCCATGGCC
 CCGGGCTCTCCACCTAGGGGCCCCCGCTCCACCACCTGCTGCTGATGCCACCCAGCGGCAGCC
 TGGCCAGAGCCGGGAGGCTGGGAAGCTGGAGGAGGTGATGCAGGAGCTGCGGGCCCTGAGGGCGCTGGT
 CAAGGAGCAGGGCAGCCATCTGCCGCTGGAGGAGCAGCTGGGCCGATGGAGAACGGGGATGCG

ACGCGTACGCGGCCGCTCGAGCAGAAACTCATCTCAGAAGAGGATCTGGCAGCAAATGATATCTGGATT
 ACAAGGATGACGACGATAAGGTTTAA

Protein Sequence:

>RC203023 protein sequence
 Red=Cloning site Green=Tags(s)

MSFRKVVRRQSKFRHVFQPVKNDQCYEDIRVSRVTWSTFCVNPFLAVIVEASGGGAFVLVPLSKTGR
 IDKAYPTVCGHTGPVLDIDWCPHNDEVIASGSEDCTVMVWQIPENGLTSPLTEPVVLEGHTRVGI
 HPTARNVLLSAGCDNVLIWNVGTAEELYRLDSLHPDLIYNVSWNHNGSLFCSACKDKSVRIIDPRRGT
 VAEREKAHEGARMRAIFLADGKVFTTGF SRMSERQLALWDPENLEEMALQELDSSNGALLPFYDPDTS
 VVYVCGKGDSSIRYFEITEPPYIHFNTFTSKEPQRGMGSMKRGLEVSKCEIARFYKLHERKCEPIVM
 TVPRKSDLFQDDLYPDTAGPEAALEAEWVSGRDADPILISLREAYVPSKQRDLKISRNVLSDRPAMA
 PGSSHLGAPASTTTAADATPSGLARAGEAGKLEEVMQELRALRALVKEQGDRICRLEEQLGRMENGDA

TRTRPLEQKLI SEEDLAANDILDYKDDDDKV

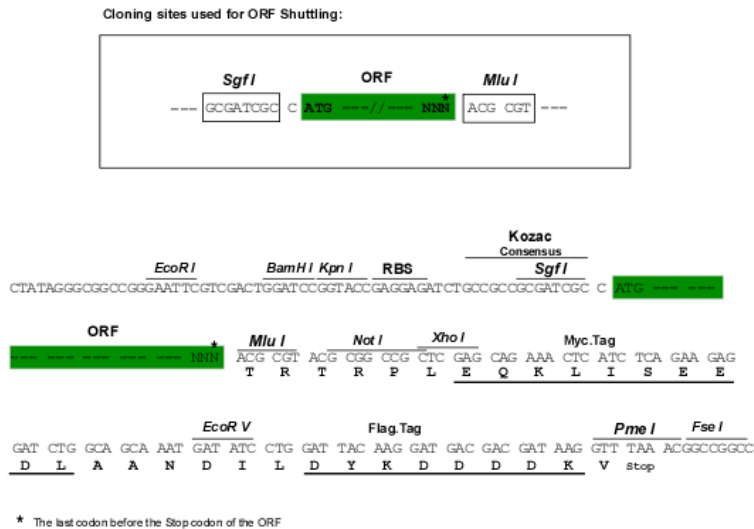
Chromatograms:

https://cdn.origene.com/chromatograms/mk6152_d10.zip

Restriction Sites:

Sgfl-Mlul

Cloning Scheme:



ACCN: NM_020441

ORF Size: 1467 bp

OTI Disclaimer: Due to the inherent nature of this plasmid, standard methods to replicate additional amounts of DNA in E. coli are highly likely to result in mutations and/or rearrangements. Therefore, OriGene does not guarantee the capability to replicate this plasmid DNA. Additional amounts of DNA can be purchased from OriGene with batch-specific, full-sequence verification at a reduced cost. Please contact our customer care team at custsupport@origene.com or by calling 301.340.3188 option 3 for pricing and delivery.

The molecular sequence of this clone aligns with the gene accession number as a point of reference only. However, individual transcript sequences of the same gene can differ through naturally occurring variations (e.g. polymorphisms), each with its own valid existence. This clone is substantially in agreement with the reference, but a complete review of all prevailing variants is recommended prior to use. [More info](#)

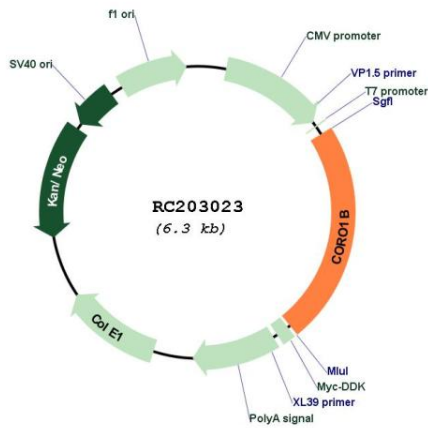
OTI Annotation: This clone was engineered to express the complete ORF with an expression tag. Expression varies depending on the nature of the gene.

Components: The ORF clone is ion-exchange column purified and shipped in a 2D barcoded Matrix tube containing 10ug of transfection-ready, dried plasmid DNA (reconstitute with 100 ul of water).

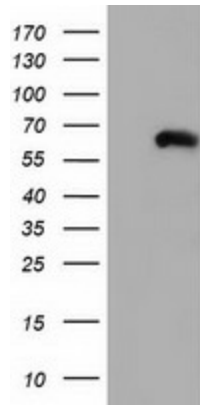
- Reconstitution Method:**
1. Centrifuge at 5,000xg for 5min.
 2. Carefully open the tube and add 100ul of sterile water to dissolve the DNA.
 3. Close the tube and incubate for 10 minutes at room temperature.
 4. Briefly vortex the tube and then do a quick spin (less than 5000xg) to concentrate the liquid at the bottom.
 5. Store the suspended plasmid at -20°C. The DNA is stable for at least one year from date of shipping when stored at -20°C.

Note:	Plasmids are not sterile. For experiments where strict sterility is required, filtration with 0.22um filter is required.
RefSeq:	<u>NM_020441.3</u>
RefSeq Size:	1927 bp
RefSeq ORF:	1470 bp
Locus ID:	57175
UniProt ID:	<u>Q9BR76</u>
Cytogenetics:	11q13.2
Domains:	WD40
MW:	54.2 kDa
Gene Summary:	Members of the coronin family, such as CORO1B, are WD repeat-containing actin-binding proteins that regulate cell motility (Cai et al., 2005 [PubMed 16027158]).[supplied by OMIM, Mar 2008]

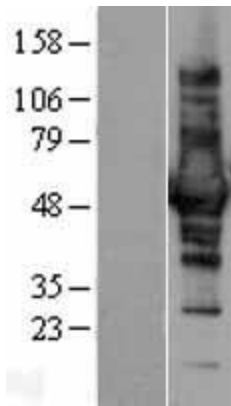
Product images:



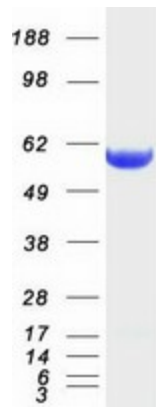
Circular map for RC203023



HEK293T cells were transfected with the pCMV6-ENTRY control (Cat# [PS100001], Left lane) or pCMV6-ENTRY CORO1B (Cat# RC203023, Right lane) cDNA for 48 hrs and lysed. Equivalent amounts of cell lysates (5 ug per lane) were separated by SDS-PAGE and immunoblotted with anti-CORO1B (Cat# [TA501573]). Positive lysates [LY402787] (100ug) and [LC402787] (20ug) can be purchased separately from OriGene.



Western blot validation of overexpression lysate (Cat# [LY402787]) using anti-DDK antibody (Cat# [TA50011-100]). Left: Cell lysates from untransfected HEK293T cells; Right: Cell lysates from HEK293T cells transfected with RC203023 using transfection reagent MegaTran 2.0 (Cat# [TT210002]).



Coomassie blue staining of purified CORO1B protein (Cat# [TP303023]). The protein was produced from HEK293T cells transfected with CORO1B cDNA clone (Cat# RC203023) using MegaTran 2.0 (Cat# [TT210002]).