

## Product datasheet for **RC203012**

### **TMEM128 (NM\_032927) Human Tagged ORF Clone**

#### Product data:

Product Type: Expression Plasmids  
Product Name: TMEM128 (NM\_032927) Human Tagged ORF Clone  
Tag: Myc-DDK  
Symbol: TMEM128  
Mammalian Cell Selection: Neomycin  
Vector: pCMV6-Entry (PS100001)  
E. coli Selection: Kanamycin (25 ug/mL)  
ORF Nucleotide Sequence: >RC203012 ORF sequence  
Red=Cloning site Blue=ORF Green=Tags(s)

TTTTGTAATACGACTCACTATAGGGCGGCCGGAATTCGTCGACTGGATCCGGTACCGAGGAGATCTGCC  
GCC**CGATCGCC**

ATGCCGCCATTTGGGTACAAAACAGAACTCCACAGCTGTTGAGAAAAAGGAGAACTCTTCCAAGAC  
TTAATATCCATTCTGGATTCTGGATTTGGCATCCATTGTTGTGACCTATTATGTTGACTCTTTAAAC  
CCTTAAAGAAAATTCCACACTAGCAGCTGGTTTCTCTGTGGCAGTGCCTTGTTCCTTGTGAGTTTATCA  
ATTGCATTTTACTGCATAGTCTACCTGGAATGGTATTGTGAATTGGAGAATATGATGTCAAGTATCCAG  
CCTTGATACCCATTACCACTGCCTCCTTTATTGCAGCAGGAATTTGCTTCAACATTGCTTTATGGCATGT  
GTGGTCGTTTTTCACTCCATTGTTGTTGTTTACCCAGTTTATGGGGTTGTCATGTTTATCACACTCCTT  
GGA

**ACGCGT**ACGCGGCCGCTCGAGCAGAACTCATCTCAGAAGAGGATCTGGCAGCAATGATATCCTGGATT  
ACAAGGATGACGACGATAAGGTTTAA

Protein Sequence: >RC203012 protein sequence  
Red=Cloning site Green=Tags(s)

MPPFGYKTETSTAVEKKEKPLPRLNIHSGFWILASIVVYVYVDFKTLKENFHTSSWFLCGSALLLVSL  
IAFYCIVYLEWYCGIGEYDVKYPALIPITTASFIAAGICFNIALWHVWSFFTPLLLFTQFMGVVMFITLL  
G

**TR**TRPLEQKLI SEEDLAANDILDYKDDDDKV

Chromatograms: [https://cdn.origene.com/chromatograms/mk6411\\_d10.zip](https://cdn.origene.com/chromatograms/mk6411_d10.zip)

Restriction Sites: Sgfl-Mlul



[View online »](#)

**Cloning Scheme:**


**ACCN:** NM\_032927

**ORF Size:** 423 bp

**OTI Disclaimer:** The molecular sequence of this clone aligns with the gene accession number as a point of reference only. However, individual transcript sequences of the same gene can differ through naturally occurring variations (e.g. polymorphisms), each with its own valid existence. This clone is substantially in agreement with the reference, but a complete review of all prevailing variants is recommended prior to use. [More info](#)

**OTI Annotation:** This clone was engineered to express the complete ORF with an expression tag. Expression varies depending on the nature of the gene.

**Components:** The ORF clone is ion-exchange column purified and shipped in a 2D barcoded Matrix tube containing 10ug of transfection-ready, dried plasmid DNA (reconstitute with 100 ul of water).

- Reconstitution Method:**
1. Centrifuge at 5,000xg for 5min.
  2. Carefully open the tube and add 100ul of sterile water to dissolve the DNA.
  3. Close the tube and incubate for 10 minutes at room temperature.
  4. Briefly vortex the tube and then do a quick spin (less than 5000xg) to concentrate the liquid at the bottom.
  5. Store the suspended plasmid at -20°C. The DNA is stable for at least one year from date of shipping when stored at -20°C.

**RefSeq:** [NM\\_032927.3](#)

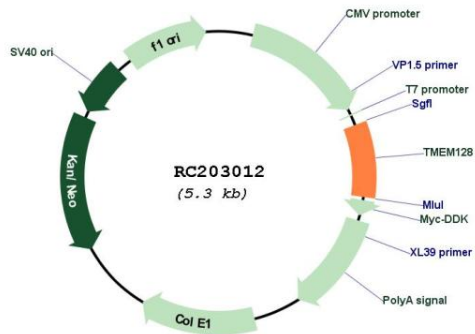
**RefSeq Size:** 1785 bp

**RefSeq ORF:** 426 bp

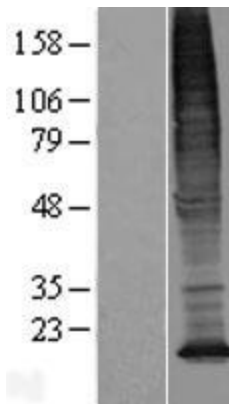
**Locus ID:** 85013

**UniProt ID:** [Q5BIH2](#)

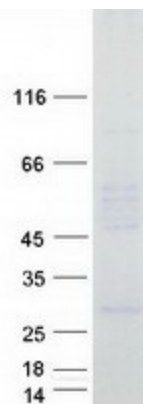
**Cytogenetics:** 4p16.3  
**Protein Families:** Transmembrane  
**MW:** 16.1 kDa

**Product images:**


Circular map for RC203012



Western blot validation of overexpression lysate (Cat# [LY409872]) using anti-DDK antibody (Cat# [TA50011-100]). Left: Cell lysates from untransfected HEK293T cells; Right: Cell lysates from HEK293T cells transfected with RC203012 using transfection reagent MegaTran 2.0 (Cat# [TT210002]).



Coomassie blue staining of purified TMEM128 protein (Cat# [TP303012]). The protein was produced from HEK293T cells transfected with TMEM128 cDNA clone (Cat# RC203012) using MegaTran 2.0 (Cat# [TT210002]).

