

## Product datasheet for **RC203011**

### ZDH12 (ZDHC12) (NM\_032799) Human Tagged ORF Clone

#### Product data:

Product Type:	Expression Plasmids
Product Name:	ZDH12 (ZDHC12) (NM_032799) Human Tagged ORF Clone
Tag:	Myc-DDK
Symbol:	ZDH12
Synonyms:	DHHC-12; ZNF400
Mammalian Cell Selection:	Neomycin
Vector:	pCMV6-Entry (PS100001)
E. coli Selection:	Kanamycin (25 ug/mL)
ORF Nucleotide Sequence:	>RC203011 representing NM_032799 Red=Cloning site Blue=ORF Green=Tags(s)

TTTTGTAATACGACTCACTATAGGGCGCCGGGAATTCGTCGACTGGATCCGGTACCGAGGAGATCTGCC  
GCC**CGATCGCC**

ATGGCGCCCTGGGCGCTCCTCAGCCCTGGGGTCTGGTGCGGACCGGGCACACCGTGCTGACCTGGGGAA  
TCACGCTGGTGTCTTCTGCACGATACCGAGCTGCGGCAATGGGAGGAGCAGGGGGAGCTGCTCCTGCC  
CCTCACCTTCTGCTCCTGGTGTGGGCTCCCTGCTGCTACCTCGCTGTGCTACTCATGGACCTGGC  
TACGTGAATGTGCAGCCCGAGCTCAGGAGGAGCTCAAAGAGGAGCAGACAGCCATGTTCTCCAGCCA  
TCCCTCTTCGGCGCTGCAGATACTGCCTGGTGTGCTGCAGCCCTGAGGGCTCGGCACTGCCGTGAGTGCCG  
CGTTGCGTCCGCGCTACGACCACCACTGCCCTGGATGGAGAACTGTGTGGGAGAGCGCAACCACCCA  
CTCTTTGTGGTCTACCTGGCGCTGCAGCTGGTGGTGTCTTCTGTGGGGCCTGTACCTGGCATGGTCAAGCC  
TCCGGTCTTCCAGCCCTGGGGTCTGTGGTTCGGTCCAGCGGGCTCCTGTTCCGCCACCTTCTGTGCT  
GTCCCTCTTCTCGTTGGTGGCCAGCCTGCTCCTCGTCTCGCACCTTACCTGGTGGCCAGCAACACCACC  
ACCTGGGAATTCATCTCCTCACACCGCATCGCTATCTCCGCCAGCGCCCGCAACCCCTTCGACCGAG  
GCCTGACCCGCAACCTGGCCACTTCTTCTGTGGATGGCCCTCAGGGTCTGGGAGACCCCTGGGCTGA  
GGAGGAGGAAGAGGGCAGCAGCCAGCTGTT

**ACGCGT**ACGCGGCGCTCGAGCAGAAACTCATCTCAGAAGAGGATCTGGCAGCAAATGATATCCTGGATT  
ACAAGGATGACGACGATAAGGTTTAA



[View online »](#)

**Protein Sequence:** >RC203011 representing NM\_032799  
 Red=Cloning site Green=Tags(s)

MAPWALLSPGVLVRTGHTVLTWGITLVFLHDTLRLQWEEQGELLLPLTFLLLVLGSLLLYLAVSLMDPG  
 YVNVQPQPEELKEEQTAMVPPAIPLRRCRYCLVLOPLRARHCRECRRCVRRYDHHCPWMENCVGERNH  
 LFVYVYALQLVLLWGLYLAWSGLRFFQPWGLWLRSSGLLFATFLLLSLFLVSLVSLVSHLYLVASNTT  
 TWEFISSHRIAYLRQPSNPFDRLTRNLAHFFCGWPSGSWETLWAEIIIEEGSSPAV

TRTRPLEQKLISEEDLAANDILDYKDDDDKV

**Chromatograms:** [https://cdn.origene.com/chromatograms/mg3507\\_e01.zip](https://cdn.origene.com/chromatograms/mg3507_e01.zip)

**Restriction Sites:** SgfI-MluI

**Cloning Scheme:**

Cloning sites used for ORF Shuttling:



\* The last codon before the Stop codon of the ORF

**ACCN:** NM\_032799

**ORF Size:** 801 bp

**OTI Disclaimer:** The molecular sequence of this clone aligns with the gene accession number as a point of reference only. However, individual transcript sequences of the same gene can differ through naturally occurring variations (e.g. polymorphisms), each with its own valid existence. This clone is substantially in agreement with the reference, but a complete review of all prevailing variants is recommended prior to use. [More info](#)

**OTI Annotation:** This clone was engineered to express the complete ORF with an expression tag. Expression varies depending on the nature of the gene.

**Components:** The ORF clone is ion-exchange column purified and shipped in a 2D barcoded Matrix tube containing 10ug of transfection-ready, dried plasmid DNA (reconstitute with 100 ul of water).

**Reconstitution Method:**

1. Centrifuge at 5,000xg for 5min.
2. Carefully open the tube and add 100ul of sterile water to dissolve the DNA.
3. Close the tube and incubate for 10 minutes at room temperature.
4. Briefly vortex the tube and then do a quick spin (less than 5000xg) to concentrate the liquid at the bottom.
5. Store the suspended plasmid at -20°C. The DNA is stable for at least one year from date of shipping when stored at -20°C.

**RefSeq:** [NM\\_032799.4](#), [NP\\_116188.2](#)

**RefSeq Size:** 1184 bp

**RefSeq ORF:** 804 bp

**Locus ID:** 84885

**UniProt ID:** [Q96GR4](#)

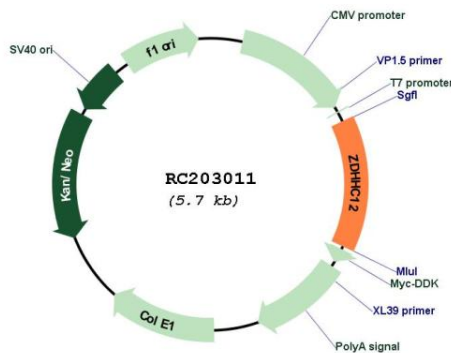
**Cytogenetics:** 9q34.11

**Protein Families:** Transmembrane

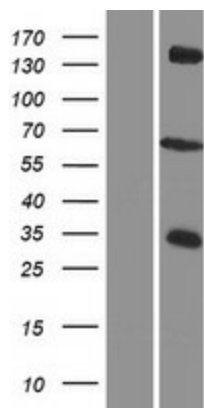
**MW:** 30.6 kDa

**Gene Summary:** Palmitoyltransferase that could catalyze the addition of palmitate onto various protein substrates. Has a palmitoyltransferase activity toward gephyrin/GPHN, regulating its clustering at synapses and its function in gamma-aminobutyric acid receptor clustering. Thereby, indirectly regulates GABAergic synaptic transmission.[UniProtKB/Swiss-Prot Function]

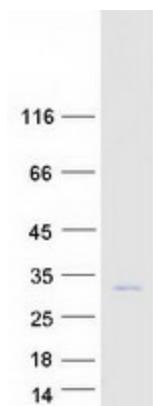
### Product images:



Circular map for RC203011



Western blot validation of overexpression lysate (Cat# [LY409806]) using anti-DDK antibody (Cat# [TA50011-100]). Left: Cell lysates from untransfected HEK293T cells; Right: Cell lysates from HEK293T cells transfected with RC203011 using transfection reagent MegaTran 2.0 (Cat# [TT210002]).



Coomassie blue staining of purified ZDHHC12 protein (Cat# [TP303011]). The protein was produced from HEK293T cells transfected with ZDHHC12 cDNA clone (Cat# RC203011) using MegaTran 2.0 (Cat# [TT210002]).