

## Product datasheet for **RC203004**

### JSRP1 (NM\_144616) Human Tagged ORF Clone

#### Product data:

Product Type:	Expression Plasmids
Product Name:	JSRP1 (NM_144616) Human Tagged ORF Clone
Tag:	Myc-DDK
Symbol:	JSRP1
Synonyms:	JP-45; JP45
Mammalian Cell Selection:	Neomycin
Vector:	pCMV6-Entry (PS100001)
E. coli Selection:	Kanamycin (25 ug/mL)
ORF Nucleotide Sequence:	>RC203004 representing NM_144616 Red=Cloning site Blue=ORF Green=Tags(s)

TTTTGTAATACGACTCACTATAGGGCGGCCGGAATTCGTCGACTGGATCCGGTACCGAGGAGATCTGCC  
GCC**CGATCGCC**

ATGTCCATGACAACCAGAGCCTGGGAGGAGCTGGATGGCGCCTGGGCAGCTGCCAGGCCCTGGAGGACC  
ACTCTGCGCTGGCCGAGACCCAGGAGGACAGGGCTTCAGCGACACCCAGGCTGGCCGACTCCGGCAGCGT  
GCCCCACGACTCTCAGGTGGCTGAAGGCCCAAGTGTGGACACCAGGCCAAGAAGATGGAAAAGAGCCT  
GCCGCCAGGGGACCCAGGAACGGGAAGGAGAGGCTGAAAGCCGGAGCGAGCCCTCGGAGCGTCCCCG  
CGCGCAAGAAGGCGCAGACCGCGCCGCCCTGCAGCCCGCCGCGCCCGCCCGGCCCTGAGCGAGGAGCT  
GCCTGGGGAGACCTGTCGCTCAACAAGTGCCTGGTGTGCTCGCCTCGCTGGTGGCGCTGCTGGGCTCGGCT  
TTCAGCTGTGCGCGACGCCGTCCCTGGGAGGCAAGCACTCCAAGCACGTGTGCCCGAGCCCTGGGTCC  
CGCAAGCTCAGCCCCGAGGGAGCCATCGTCGCCCTGCCTAAGTTCGAGGCCAGGGCGCCTCCATCAGC  
GCCGCTCGCGCCCGGGCCGAGGAGGTCAGACCCAAGATTCCCGGGAGTCGGGAGGCTGCAGAGAAC  
GACGAAGAGGAGCCCGGCGAGGCCACCGGAGAGGCCGTCCGGGAGGACCGTGTGACCCTCGCAGACCGGG  
GACCAAGGAGAGGCCTCGGAGAGAGGGGAAGCCGCGGAAGGAGAAGCCGCGGAAGGAGGAGAGACCTAA  
GAAAGAGAGGCCCGGAAAGAGGAGAGGCCACGGGCCCGCCAGGGAGCCCCGGGAAGCCCTACCCAGCGC  
TGGGAGTCACGGAAGGGGGCCACCGGCCGTGGGCACGGGACTCCAGGGACGCCAGCCAGGAAGAAGC  
AGGCCTGGGTGTCCCCGAGGCGTCCCAGCAGGAGCAGCGGCCCTGGGAGTCGCCAGAAGCTCCGCCGAGG  
CAAGGGCGGGAC

**ACGCGT**ACGCGGCCGCTCGAGCAGAACTCATCTCAGAAGAGGATCTGGCAGCAATGATATCCTGGATT  
ACAAGGATGACGACGATAAGGTTAA



[View online »](#)

**Protein Sequence:** >RC203004 representing NM\_144616  
Red=Cloning site Green=Tags(s)

MSMTTRAWEE LDGGLGSCQALEDHSALETQEDRASATPRLADSGSVPHDSQVAEGPSVDTRPKKMEKEP  
 AARGTPGTGKERLKAGASPRSPARKKAQTAPPLQPPPPPPALSEELPWGDL SLNKCLVLASLVALLGSA  
 FQLCRDAVPGEAALQARVPEPWVPPSSAPREPSSPLPKFEAQAPP SAPPAPRAEAEVRPKIPGSR EAAEN  
 DEEEPGEATGEAVREDRVT LADRGPKERPRREGKPRKEKPRKEERPKKERPRKEER PRAAREPREALPQR  
 WESREGGHRPWARD SRDAEPRKKQAWVSPRRPDEEQRPGSRQKL RAGKGRD

TRTRPLEQKLISEEDLAANDILDYKDDDDKV

**Chromatograms:** [https://cdn.origene.com/chromatograms/mk8112\\_e08.zip](https://cdn.origene.com/chromatograms/mk8112_e08.zip)

**Restriction Sites:** SgfI-MluI

**Cloning Scheme:**



**ACCN:** NM\_144616

**ORF Size:** 993 bp

**OTI Disclaimer:** The molecular sequence of this clone aligns with the gene accession number as a point of reference only. However, individual transcript sequences of the same gene can differ through naturally occurring variations (e.g. polymorphisms), each with its own valid existence. This clone is substantially in agreement with the reference, but a complete review of all prevailing variants is recommended prior to use. [More info](#)

**OTI Annotation:** This clone was engineered to express the complete ORF with an expression tag. Expression varies depending on the nature of the gene.

**Components:** The ORF clone is ion-exchange column purified and shipped in a 2D barcoded Matrix tube containing 10ug of transfection-ready, dried plasmid DNA (reconstitute with 100 ul of water).

**Reconstitution Method:**

1. Centrifuge at 5,000xg for 5min.
2. Carefully open the tube and add 100ul of sterile water to dissolve the DNA.
3. Close the tube and incubate for 10 minutes at room temperature.
4. Briefly vortex the tube and then do a quick spin (less than 5000xg) to concentrate the liquid at the bottom.
5. Store the suspended plasmid at -20°C. The DNA is stable for at least one year from date of shipping when stored at -20°C.

**RefSeq:** [NM\\_144616.4](#)

**RefSeq Size:** 1145 bp

**RefSeq ORF:** 996 bp

**Locus ID:** 126306

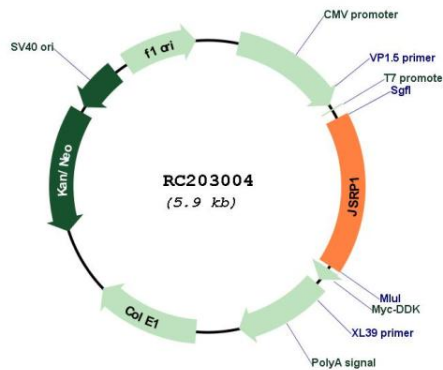
**UniProt ID:** [Q96MG2](#)

**Cytogenetics:** 19p13.3

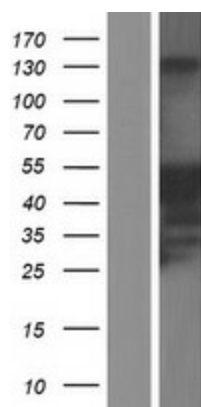
**MW:** 36.3 kDa

**Gene Summary:** The protein encoded by this gene is involved in excitation-contraction coupling at the sarcoplasmic reticulum. The encoded protein can interact with CACNA1S, CACNB1, and calsequestrin to help regulate calcium influx and efflux in skeletal muscle. [provided by RefSeq, Jul 2012]

**Product images:**



Circular map for RC203004



Western blot validation of overexpression lysate (Cat# [LY408251]) using anti-DDK antibody (Cat# [TA50011-100]). Left: Cell lysates from untransfected HEK293T cells; Right: Cell lysates from HEK293T cells transfected with RC203004 using transfection reagent MegaTran 2.0 (Cat# [TT210002]).