

Product datasheet for RC203000

OVOL2 (NM_021220) Human Tagged ORF Clone

Product data:

Product Type:	Expression Plasmids
Product Name:	OVOL2 (NM_021220) Human Tagged ORF Clone
Tag:	Myc-DDK
Symbol:	OVOL2
Synonyms:	CHED; CHED1; CHED2; EUROIMAGE566589; PPCD1; ZNF339
Mammalian Cell Selection:	Neomycin
Vector:	pCMV6-Entry (PS100001)
E. coli Selection:	Kanamycin (25 ug/mL)
ORF Nucleotide Sequence:	>RC203000 ORF sequence Red=Cloning site Blue=ORF Green=Tags(s)

TTTTGTAATACGACTCACTATAGGGCGCCGGGAATTCGTCGACTGGATCCGGTACCGAGGAGATCTGCC
GCC**CGATCGCC**

ATGCCCAAAGTCTTCTGGTGAAGAGGAGGAGCCTGGGGTCTCGGTCCGCAGCTGGGATGAGCTCCCGG
ATGAGAAAAGGGCAGACACCTACATCCCAGTGGGCCTAGGCCGCTGCTCCACGACCCCCCGAGGACTG
CCGCAGCGACGGCGGCAGCAGCGGCAGCGGCAGCAGCGCGGGGAGCCTGGAGGAGCAGAGAGC
AGCTCGTCCCGCAGCCCCGAGAGCGAAACCCCGAGCCGGCGACGCCGAGGGCCCCGATGGACACC
TGGCGACCAAGCAGCGCCGGTCCGACATCGAAAATCAAGTTCACCACAGGCACGTGCAGCGACTCGGT
GGTTCACAGCTGTGACCTGTGTGCAAGGGCTTCGCTCTGCAGCGCATGCTGAACCGTCACTCAAGTGC
CACAACCAAGTGAAAAGACACCTGTGCACCTTCTGCGGCAAGGGCTTCAACGACACCTTCGACCTGAAGA
GGCACGTCCGCACACACAGGCATTTCGTCCTACAAATGCAACGTCTGCAATAAAGCCTTCACCCAGCG
CTGCTCTCTGGAGTCCCACCTGAAGAAAATCCATGGGGTGCAGCAGCAGTATGCCATAAGCAGCGGCGG
GACAAGCTCTACGTCTGCGAGGATTGCGGCTACACGGGCCACCCAGGAGGACCTGTACCTGCACGTGA
ACAGTGCCCATCCGGCAGCTCGTTTCTCAAAAAGACATCTAAAAACTGGCAGCCCTTTCGAGGGCAA
GCTGACATCCGCACACCAGGAGAATACCAGCCTGAGTGAGGAGGAGGAGGAAG

ACGCGTACGCGGCCGCTCGAGCAGAAACTCATCTCAGAAGAGGATCTGGCAGCAAATGATATCCTGGATT
ACAAGGATGACGACGATAAGGTTTAA



[View online »](#)

Protein Sequence: >RC203000 protein sequence
 Red=Cloning site Green=Tags(s)

MPKVFLVKRRSLGVSVRSDWDELPEKRDYIPVGLGRLLHDPEDCRSDGGSSSGSSSAGEPGGAES
 SSSPHAPESETPEPGDAEGPDGHLATKQRPVARSKIKFTTGTCSDSVVHSCDLGKGFRLQRMLNRHLKC
 HNQVKRHLCTFCGKGFNDTDFDLKRHRVTRHTGIRPYKCNVCNKAFTRCSLESHLKKIHGVQQYAYKQRR
 DKLYVCEDCGYTGPTQEDLYLHVNSAHPGSSFLKKTSKKLAALLQGKLSAHQENTSLSEEEERK

TRTRPLEQKLISEEDLAANDILDYKDDDDKV

Chromatograms: https://cdn.origene.com/chromatograms/mk6627_f07.zip

Restriction Sites: SgfI-MluI

Cloning Scheme:

Cloning sites used for ORF Shuttling:



* The last codon before the Stop codon of the ORF

ACCN: NM_021220

ORF Size: 825 bp

OTI Disclaimer: The molecular sequence of this clone aligns with the gene accession number as a point of reference only. However, individual transcript sequences of the same gene can differ through naturally occurring variations (e.g. polymorphisms), each with its own valid existence. This clone is substantially in agreement with the reference, but a complete review of all prevailing variants is recommended prior to use. [More info](#)

OTI Annotation: This clone was engineered to express the complete ORF with an expression tag. Expression varies depending on the nature of the gene.

Components: The ORF clone is ion-exchange column purified and shipped in a 2D barcoded Matrix tube containing 10ug of transfection-ready, dried plasmid DNA (reconstitute with 100 ul of water).

Reconstitution Method:

1. Centrifuge at 5,000xg for 5min.
2. Carefully open the tube and add 100ul of sterile water to dissolve the DNA.
3. Close the tube and incubate for 10 minutes at room temperature.
4. Briefly vortex the tube and then do a quick spin (less than 5000xg) to concentrate the liquid at the bottom.
5. Store the suspended plasmid at -20°C. The DNA is stable for at least one year from date of shipping when stored at -20°C.

RefSeq: [NM_021220.4](#)

RefSeq Size: 1555 bp

RefSeq ORF: 828 bp

Locus ID: 58495

UniProt ID: [Q9BRP0](#)

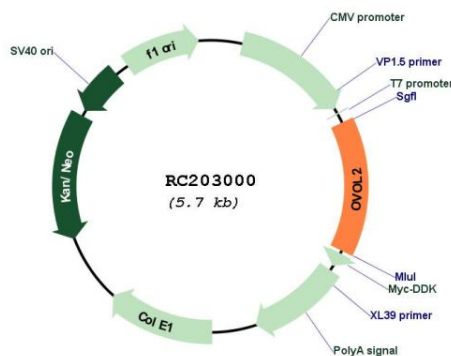
Cytogenetics: 20p11.23

Protein Families: Transcription Factors

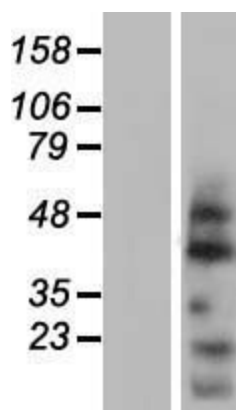
MW: 30.4 kDa

Gene Summary: This gene encodes a member of the evolutionarily conserved ovo-like protein family. Mammalian members of this family contain a single zinc finger domain composed of a tetrad of C2H2 zinc fingers with variable N- and C-terminal extensions that contain intrinsically disordered domains. Members of this family are involved in epithelial development and differentiation. Knockout of this gene in mouse results in early embryonic lethality with phenotypes that include neurectoderm expansion, impaired vascularization, and heart anomalies. In humans, allelic variants of this gene have been associated with posterior polymorphous corneal dystrophy. [provided by RefSeq, Apr 2016]

Product images:



Circular map for RC203000



Western blot validation of overexpression lysate (Cat# [LY412008]) using anti-DDK antibody (Cat# [TA50011-100]). Left: Cell lysates from untransfected HEK293T cells; Right: Cell lysates from HEK293T cells transfected with RC203000 using transfection reagent MegaTran 2.0 (Cat# [TT210002]).