

Product datasheet for RC202997

MGC13096 (PDCD2L) (NM_032346) Human Tagged ORF Clone

Product data:

Product Type:	Expression Plasmids
Product Name:	MGC13096 (PDCD2L) (NM_032346) Human Tagged ORF Clone
Tag:	Myc-DDK
Symbol:	MGC13096
Mammalian Cell Selection:	Neomycin
Vector:	pCMV6-Entry (PS100001)
E. coli Selection:	Kanamycin (25 ug/mL)
ORF Nucleotide Sequence:	>RC202997 ORF sequence Red=Cloning site Blue=ORF Green=Tags(s)

TTTTGTAATACGACTCACTATAGGGCGGCCGGAATTCGTCGACTGGATCCGGTACCGAGGAGATCTGCC
GCCCGATCGCC

ATGGCGGCCGTTCTGAAGCCGGTGTCTGCTGGCCCTTCGAGATGCGCCGGTGCACGGCAGCCCCACAGGGC
CGGGTGCCTGGACTGCTAGCAAGCTGGGCGGCATTCGGATGCTCTGCCACCGTGGCTGCGCCAGGCC
CGTGTGTACGCGCTGCGGGCAGCCGCTCGCTCTGGTCGTGAGGTGATTGCCCGCTGGAAGGCTCCCCG
TTTCACCGTCTGCTGCACGTGTTTCGCGTGCCTGCCCCGGCTGTAGCACCGCGGTGCGCGCAGCTGGA
AGGTGTTCCGCTCCCAGTGCCTGCAGGTGCCAGAGAGAGAGGGCGCAGGACGCTCAGAAACAGGGAAACAG
CCTTGCAGCTGAGGACTGGTGTGAAGGTGCTGATGACTGGGGAAGTGATACTGAGGAGGGCCTTACCA
CAGTTTACCTTGATTTTGGGAATGATGCCAGCAGTGCCAAAGACGTAGACTGGACTGCTCGGCTCCAAG
ACCTCCGCTGCAGGATGCTGTCTGGGTGCTGCCATCCTGTGCCTCCTGGGCTGCCGCTCTTCTGCTGCC
CTACTACATCTGTGTTGCAGATGAGGATGATTACAGGGACTTTGTCAACCTGGATCATGCCACAGCCTT
CTGAGGGACTATCAGCAGAGAGAAGGCATTGCCATGGATCAGTTGCTTTCCCAAAGCCTTCTAATGATG
GTGATGAAAAATATGAGAAGACCATAATTTAAAAGTGGAGATCAGACGTTTTACAAATTCATGAAGCGAAT
TGCTGCTTGTGAGGACAGATTTTGGGTATTCTGGAGTGGAGAGCCACTCTTTTTGACCTGCCCTACA
TCAGAAGTCACCGAGCTCCAGCCTGCAGCCAGTGTGGAGCCAAAGGATATTTGAGTTTCAGCTTATGC
CAGCACTGGTCAGCATGCTCAAGAGTGTAATTTAGGTCTTTCTGTGGAATTTGGAACAATCTAGTTTA
CACATGTGAGAAGAGTTGCTGGCCCCAAATCATCAGACTCCCATGGAAGAATTTTGATTATACAAGAA
GACCCAGATGAATTATTGTTAAG

ACGCGTACGCGGCCGCTCGAGCAGAACTCATCTCAGAAGAGGATCTGGCAGCAAATGATATCCTGGATT
ACAAGGATGACGACGATAAGGTTTAA



[View online »](#)

Protein Sequence: >RC202997 protein sequence
Red=Cloning site Green=Tags(s)

MAAVLKPVLLGLRDAPVHGSPTGPGAWTASLGGIPDALPTVAAPRPVCQRCQPPLALVVQVYVYCPLEGSP
 FHRLLVHFACACPGCSTGGARSWKVFERSQCLQVPEREAQDAQKQGNLAAEDWCEGADDWGSDEEGPSP
 QFTLDFGNDASSAKDWDWTLRLQDLRLQDAVLGAAHPVPPGLPLFLPYVICVADEDDYRDFVNLDAHSL
 LRDYQOREGIAMDQLLSQSLPNDGDEKYEKTIKSGDQTFYKFMKRIACQEQILRYSWSGEPLFLTCPT
 SEVTELPACSQCGQRIFEFQLMPALVSMKLSANLGLSVEFGTILVYTCESKSCWPPNHQTPMEEFCCIQE
 DPDELLFK

TRTRPLEQKLISEEDLAANDILDYKDDDDKV

Chromatograms: https://cdn.origene.com/chromatograms/mk6412_e11.zip

Restriction Sites: SgfI-MluI

Cloning Scheme:

Cloning sites used for ORF Shuttling:



* The last codon before the Stop codon of the ORF

ACCN: NM_032346

ORF Size: 1074 bp

OTI Disclaimer: The molecular sequence of this clone aligns with the gene accession number as a point of reference only. However, individual transcript sequences of the same gene can differ through naturally occurring variations (e.g. polymorphisms), each with its own valid existence. This clone is substantially in agreement with the reference, but a complete review of all prevailing variants is recommended prior to use. [More info](#)

OTI Annotation: This clone was engineered to express the complete ORF with an expression tag. Expression varies depending on the nature of the gene.

Components: The ORF clone is ion-exchange column purified and shipped in a 2D barcoded Matrix tube containing 10ug of transfection-ready, dried plasmid DNA (reconstitute with 100 ul of water).

Reconstitution Method:

1. Centrifuge at 5,000xg for 5min.
2. Carefully open the tube and add 100ul of sterile water to dissolve the DNA.
3. Close the tube and incubate for 10 minutes at room temperature.
4. Briefly vortex the tube and then do a quick spin (less than 5000xg) to concentrate the liquid at the bottom.
5. Store the suspended plasmid at -20°C. The DNA is stable for at least one year from date of shipping when stored at -20°C.

Note: Plasmids are not sterile. For experiments where strict sterility is required, filtration with 0.22um filter is required.

RefSeq: [NM_032346.2](#)

RefSeq Size: 1174 bp

RefSeq ORF: 1077 bp

Locus ID: 84306

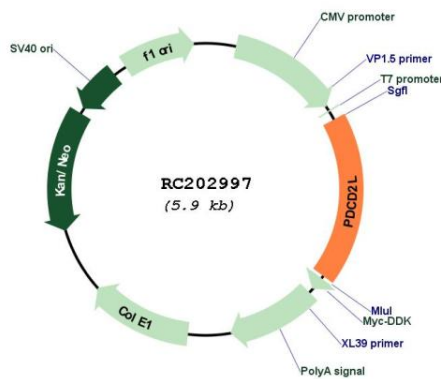
UniProt ID: [Q9BRP1](#)

Cytogenetics: 19q13.11

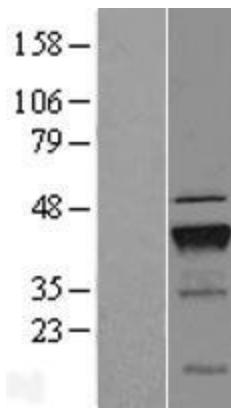
MW: 39.4 kDa

Gene Summary: Over-expression suppresses AP1, CREB, NFAT, and NF-kB transcriptional activation, and delays cell cycle progression at S phase.[UniProtKB/Swiss-Prot Function]

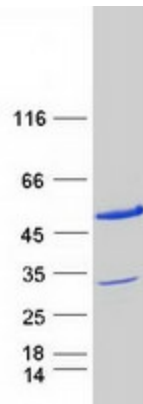
Product images:



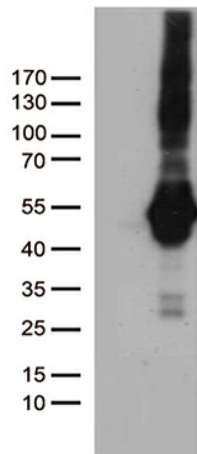
Circular map for RC202997



Western blot validation of overexpression lysate (Cat# [LY410183]) using anti-DDK antibody (Cat# [TA50011-100]). Left: Cell lysates from untransfected HEK293T cells; Right: Cell lysates from HEK293T cells transfected with RC202997 using transfection reagent MegaTran 2.0 (Cat# [TT210002]).



Coomassie blue staining of purified PDCD2L protein (Cat# [TP302997]). The protein was produced from HEK293T cells transfected with PDCD2L cDNA clone (Cat# RC202997) using MegaTran 2.0 (Cat# [TT210002]).



HEK293T cells were transfected with the pCMV6-ENTRY control (Cat# [PS100001], Left lane) or pCMV6-ENTRY PDCD2L (Cat# RC202997, Right lane) cDNA for 48 hrs and lysed. Equivalent amounts of cell lysates (5 ug per lane) were separated by SDS-PAGE and immunoblotted with anti-PDCD2L (Cat# [TA812472])(1:500). Positive lysates [LY410183] (100ug) and [LC410183] (20ug) can be purchased separately from OriGene.