

## Product datasheet for RC202994

### PAAF1 (NM\_025155) Human Tagged ORF Clone

#### Product data:

Product Type:	Expression Plasmids
Product Name:	PAAF1 (NM_025155) Human Tagged ORF Clone
Tag:	Myc-DDK
Symbol:	PAAF1
Synonyms:	PAAF; Rpn14; WDR71
Mammalian Cell Selection:	Neomycin
Vector:	pCMV6-Entry (PS100001)
E. coli Selection:	Kanamycin (25 ug/mL)
ORF Nucleotide Sequence:	>RC202994 ORF sequence Red=Cloning site Blue=ORF Green=Tags(s)

TTTTGTAATACGACTCACTATAGGGCGGCCGGAATTCGTCGACTGGATCCGGTACCGAGGAGATCTGCC  
GCC**CGATCGCC**

ATGGCGGCGCCTTTGAGGATTCAGAGCGACTGGGCGCAAGCCCTCAGGAAGGATGAAGGGGAGGCCTGGC  
TGAGCTGTCATCCCCAGGAAACCATCTTTGTATGGCAGCCTGACTTGTCAAGGAATTGGCCTAGATGG  
CATCCCAGAGGTTACAGCTTCAGAAGGATTTACTGTGAATGAAATAACAAGAAAAGCATTTCATATTTCA  
TGTCAAAAGGAAAATGCATCTTCTAAGTTTTGGCACCATACTACTTTTTCCAGAATTCATAAAGA  
GTATAACATGCCTGGACATTTCCAGCAGAGGAGGTCTTGGTGTGTCTTCTAGTACTGACGGGACCATGAA  
AATCTGGCAGGCTTCCAATGGAGAACTCAGGAGAGTATTGGAAGGACATGTGTTGATGTGAATTGTTGC  
AGGTTTTTCCCATCAGGCCTTGTGGTCTGAGTGGGGGAATGGATGCCAGCTGAAGATATGGTCAGCTG  
AAGATGCTAGCTGCGTGGTGACCTTCAAAGGTCACAAAGGAGGTATCCTGGATACAGCCATCGTTGATCG  
GGGGAGGAATGTGGTGTCTGCTTCTCGAGATGGGACAGCAGCACTTTGGGATTGTGGGCGCTCAGGCTGC  
TTGGGAGTCCTTGAGATTGTGGTCTTCTATCAATGGAGTGGCGGTGGGTGCTGCTGACAACTCCATAA  
ACCTTGGCTCCCCTGAGCAGATGCCAGTGAACGGGAGGTTGGAACAGAGGCCAAAATGCTGCTCTTGGC  
CCGGGAAGATAAGAACTTCAGTGTCTGGGACTACAGAGCAGGCAGCTGGTGTCTCTTTATTGGCTCA  
GACGCTTCAACTGCTGTACTTTCTCTGCTTCTTGGCTTCTTGGCTATTGGCTGGGACTCAAGATGGAACATT  
ATCAGCTGGATGTGAGGAGTCCAAGGGCTCCGGTACAAGTCATCCACAGATCAGGAGCACCAGTTCTATC  
CCTGCTAAGTGTGAGAGATGGATTATTGCTAGCCAAGGTGATGGAAGCTGTTTTATTGTCCAGCAAGAC  
TTAGACTATGCTACTGAGCTCACTGGGGCTGACTGTGACCCTGTGTACAAGGTAGCCACATGGGAGAAGC  
AGATCTACACATGCTGTGAGACGGTCTTGTACGACGCTACCAGCTTTCTGACCTC

**ACGCGT**ACGCGGCCGCTCGAGCAGAACTCATCTCAGAAGAGGATCTGGCAGCAAATGATATCCTGGATT  
ACAAGGATGACGACGATAAGGTTTAA



[View online >](#)

**Protein Sequence:** >RC202994 protein sequence  
Red=Cloning site Green=Tags(s)

MAAPLRIQSDWAQALRKDEGEAWLSCHPPGKPSLYGSLTCQIGLDGIPEVTASEGFTVNEINKKSIHIS  
 CPKENASSKFLAPYTTFSRIHTKSITCLDISSRGLGVSSSTDGTMKIWQASNGELRRVLEGHVFDVNCC  
 RFFPSSLVVLSSGMDAQLKIWSAEDASCVVTFKGHKGGILDTAIVDRGRNVVSASRDGTARLWDCGRSGC  
 LGVLADCGSSINGVAVGAADNSINLGSPEQMPSEREVGTEAKMLLLAREDKKLQCLGLQSRQLVFLFIGS  
 DAFNCCTFLSGFLLLAGTQDGNLYQLDVRSPRAPVQVIHRSGAPVLSLLSVRDGFIASQGDGSCFIYQQD  
 LDYVTELTGADCDPVYKVATWEKQIYTCRRDGLVRRYQLSDL

TRTRPLEQKLISEEDLAANDILDYKDDDDKV

**Chromatograms:** [https://cdn.origene.com/chromatograms/mk6435\\_c03.zip](https://cdn.origene.com/chromatograms/mk6435_c03.zip)

**Restriction Sites:** SgfI-MluI

**Cloning Scheme:**



\* The last codon before the Stop codon of the ORF

**ACCN:** NM\_025155

**ORF Size:** 1176 bp

**OTI Disclaimer:** The molecular sequence of this clone aligns with the gene accession number as a point of reference only. However, individual transcript sequences of the same gene can differ through naturally occurring variations (e.g. polymorphisms), each with its own valid existence. This clone is substantially in agreement with the reference, but a complete review of all prevailing variants is recommended prior to use. [More info](#)

**OTI Annotation:** This clone was engineered to express the complete ORF with an expression tag. Expression varies depending on the nature of the gene.

**Components:** The ORF clone is ion-exchange column purified and shipped in a 2D barcoded Matrix tube containing 10ug of transfection-ready, dried plasmid DNA (reconstitute with 100 ul of water).

**Reconstitution Method:**

1. Centrifuge at 5,000xg for 5min.
2. Carefully open the tube and add 100ul of sterile water to dissolve the DNA.
3. Close the tube and incubate for 10 minutes at room temperature.
4. Briefly vortex the tube and then do a quick spin (less than 5000xg) to concentrate the liquid at the bottom.
5. Store the suspended plasmid at -20°C. The DNA is stable for at least one year from date of shipping when stored at -20°C.

**RefSeq:** [NM\\_025155.3](#)

**RefSeq Size:** 1626 bp

**RefSeq ORF:** 1179 bp

**Locus ID:** 80227

**UniProt ID:** [Q9BRP4](#)

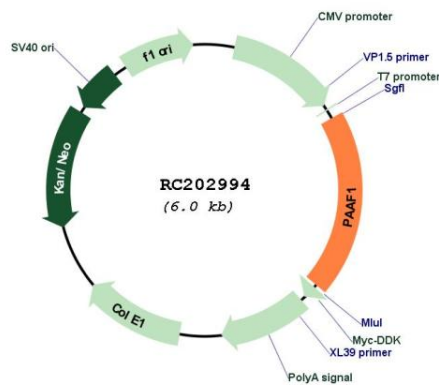
**Cytogenetics:** 11q13.4

**Domains:** WD40

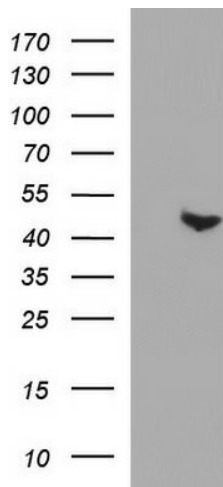
**MW:** 42.2 kDa

**Gene Summary:** This gene encodes a WD repeat-containing protein involved in regulation of association of proteasome components. During HIV infection, the encoded protein is thought to promote provirus transcription through recruitment of the 19S regulatory complex. Alternatively spliced transcript variants encoding multiple isoforms have been observed for this gene. [provided by RefSeq, Jun 2012]

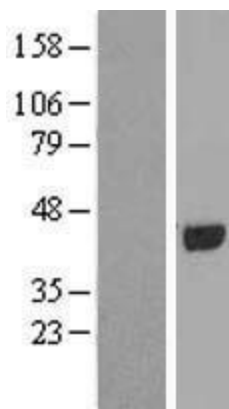
**Product images:**



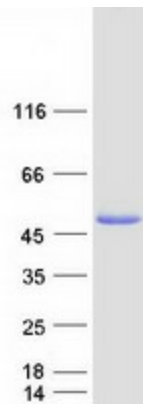
Circular map for RC202994



HEK293T cells were transfected with the pCMV6-ENTRY control (Cat# [PS100001], Left lane) or pCMV6-ENTRY PAAF1 (Cat# RC202994, Right lane) cDNA for 48 hrs and lysed. Equivalent amounts of cell lysates (5 ug per lane) were separated by SDS-PAGE and immunoblotted with anti-PAAF1 (Cat# [TA507207]). Positive lysates [LY410872] (100ug) and [LC410872] (20ug) can be purchased separately from OriGene.



Western blot validation of overexpression lysate (Cat# [LY410872]) using anti-DDK antibody (Cat# [TA50011-100]). Left: Cell lysates from untransfected HEK293T cells; Right: Cell lysates from HEK293T cells transfected with RC202994 using transfection reagent MegaTran 2.0 (Cat# [TT210002]).



Coomassie blue staining of purified PAAF1 protein (Cat# [TP302994]). The protein was produced from HEK293T cells transfected with PAAF1 cDNA clone (Cat# RC202994) using MegaTran 2.0 (Cat# [TT210002]).