

## Product datasheet for **RC202986**

### SHD (NM\_020209) Human Tagged ORF Clone

#### Product data:

Product Type: Expression Plasmids  
 Product Name: SHD (NM\_020209) Human Tagged ORF Clone  
 Tag: Myc-DDK  
 Symbol: SHD  
 Mammalian Cell Selection: Neomycin  
 Vector: pCMV6-Entry (PS100001)  
 E. coli Selection: Kanamycin (25 ug/mL)  
 ORF Nucleotide Sequence: >RC202986 ORF sequence  
 Red=Cloning site Blue=ORF Green=Tags(s)

TTTTGTAATACGACTCACTATAGGGCGGCCGGAATTCGTCGACTGGATCCGGTACCGAGGAGATCTGCC  
 GCC**CGATCGCC**

ATGGCCAAGTGGCTACGGGACTACCTGAGCTTTGGGGTTCGGAGGCCCTCCGAGCCGCCACCCCGG  
 ACTACACCGAGAGCGACATCCTGAGGGCTACCGCGCGCAGAAGAACCTGGACTTCGAGGACCCCTATGA  
 GGACGCGGAGAGCCGCTTGGAGCCGACCCCGGGCCCTGGGGACTCCAAGAACCCGGAGATGCCAAG  
 TATGGTTCTCCAAGCACCGGCTCATCAAGGTGGAGGCTGCGGATATGGCCAGAGCCAAGGCCCTCTGG  
 GCGGCCCGGGGAGGAGCTGGAAGCCGACACTGAGTATTTAGACCCCTTTGATGCTCAGCCTCATCCTGC  
 ACCCCCGGATGATGGGTACATGGAGCCCTACGATGCCAATGGGTCATGAGTGAACCTCCCGGCAGAGGG  
 GTGCAGCTCTATGACACCCCTTATGAGGAACAGGACCCAGAGACAGCAGATGGACCCCTTCTGGGCAGA  
 AGCCTCGGCAGAGCCGGATGCCCCAGGAAGATGAACGGCCAGCAGATGAGTATGATCAGCCCTGGGAGTG  
 GAAGAAAGACCACATCTCCAGGGCGTTTGCAGTGCAGTTTGCAGTCCAGAGTGGGAGAGGACTCCAGGC  
 TCAGCCAAGGAGCTCCGGAGACCTCCGCCAGAAGCCCCAGCCTGCGGAGCGTGTGACCAGCCCTGC  
 CCCTGGAGAAACAGCCGTGGTTTTCATGGCCCCCTGAACAGGGCGGATGCAGAGAGCCTCCTGTCCCTCTG  
 CAAGGAAGGCAGTACCTAGTGGGCTCAGTGAGACCAACCCCCAGGACTGCTCCTGTCTCTCAGGAGC  
 AGCCAGGGCTTCTGCATCTGAAGTTTCGCGCGGACCCGTGAGAACCAGGTGGTGTGGGCCAACACAGCG  
 GGCCCTTCCCCAGCGTGCCCGAGCTCGTCTCCACTACAGTTTACGCCCACTGCCGGTGCAGGGTGCCGA  
 GCATCTGGCTCTGCTGTACCCCGTGGTACGCAGACCCCC

**ACGCGT**ACGCGGCCGCTCGAGCAGAACTCATCTCAGAAGAGGATCTGGCAGCAAATGATATCCTGGATT  
 ACAAGGATGACGACGATAAGGTTTAA



[View online »](#)

**Protein Sequence:** >RC202986 protein sequence  
Red=Cloning site Green=Tags(s)

MAKWLRDYLSFGGRRPPQPPTPDYTESDILRAYRAQKNLDFEDPYEDAESRLEPDPAGPGDSKNPGDAK  
 YGSPKHRLIKVEAADMARAKALLGGPGEELADTEYLDPFDAQPHAPPDDGYMEPYDAQWVMSLPGRG  
 VQLYDTPYEEQDPETADGPPSGQKPRQSRMPQEDERPADEYDQPWEWKKDHI SRAFAVQFDSPEWERTPG  
 SAKELRRPPRSPQPAERVDPALPLEKQPFHGPLNRADAE SLLSLCKEGSYLVRLSETNPQDCSLSLRS  
 SQGFLHLKFA RTRENQVVLGQHS GPFPSVPELVLHYSSRPLPVQGA EHLALLYPVVTQTP

TRTRPLEQKLISEEDLAANDILDYKDDDDKV

**Chromatograms:** [https://cdn.origene.com/chromatograms/mk6411\\_b07.zip](https://cdn.origene.com/chromatograms/mk6411_b07.zip)

**Restriction Sites:** SgfI-MluI

**Cloning Scheme:**

Cloning sites used for ORF Shuttling:



\* The last codon before the Stop codon of the ORF

**ACCN:** NM\_020209

**ORF Size:** 1020 bp

**OTI Disclaimer:** The molecular sequence of this clone aligns with the gene accession number as a point of reference only. However, individual transcript sequences of the same gene can differ through naturally occurring variations (e.g. polymorphisms), each with its own valid existence. This clone is substantially in agreement with the reference, but a complete review of all prevailing variants is recommended prior to use. [More info](#)

**OTI Annotation:** This clone was engineered to express the complete ORF with an expression tag. Expression varies depending on the nature of the gene.

**Components:** The ORF clone is ion-exchange column purified and shipped in a 2D barcoded Matrix tube containing 10ug of transfection-ready, dried plasmid DNA (reconstitute with 100 ul of water).

**Reconstitution Method:**

1. Centrifuge at 5,000xg for 5min.
2. Carefully open the tube and add 100ul of sterile water to dissolve the DNA.
3. Close the tube and incubate for 10 minutes at room temperature.
4. Briefly vortex the tube and then do a quick spin (less than 5000xg) to concentrate the liquid at the bottom.
5. Store the suspended plasmid at -20°C. The DNA is stable for at least one year from date of shipping when stored at -20°C.

**RefSeq:** [NM\\_020209.4](#)

**RefSeq Size:** 2598 bp

**RefSeq ORF:** 1023 bp

**Locus ID:** 56961

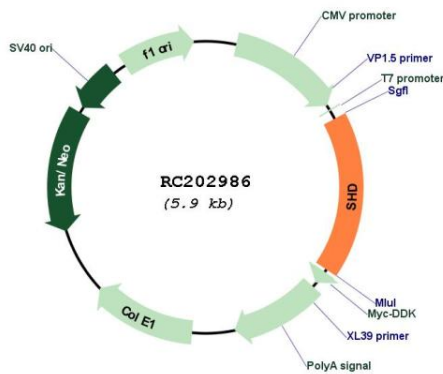
**UniProt ID:** [Q96IW2](#)

**Cytogenetics:** 19p13.3

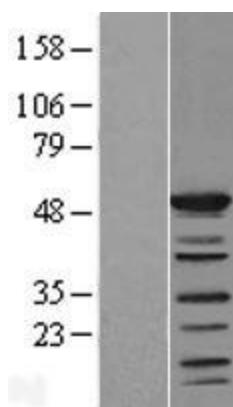
**MW:** 38.3 kDa

**Gene Summary:** May function as an adapter protein.[UniProtKB/Swiss-Prot Function]

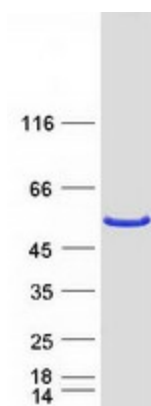
**Product images:**



Circular map for RC202986



Western blot validation of overexpression lysate (Cat# [LY412594]) using anti-DDK antibody (Cat# [TA50011-100]). Left: Cell lysates from untransfected HEK293T cells; Right: Cell lysates from HEK293T cells transfected with RC202986 using transfection reagent MegaTran 2.0 (Cat# [TT210002]).



Coomassie blue staining of purified SHD protein (Cat# [TP302986]). The protein was produced from HEK293T cells transfected with SHD cDNA clone (Cat# RC202986) using MegaTran 2.0 (Cat# [TT210002]).