

## Product datasheet for RC202984

### Ocular development associated gene (GATAD1) (NM\_021167) Human Tagged ORF Clone

#### Product data:

Product Type:	Expression Plasmids
Product Name:	Ocular development associated gene (GATAD1) (NM_021167) Human Tagged ORF Clone
Tag:	Myc-DDK
Symbol:	Ocular development associated gene
Synonyms:	CMD2B; ODAG; RG083M05.2
Mammalian Cell Selection:	Neomycin
Vector:	pCMV6-Entry (PS100001)
E. coli Selection:	Kanamycin (25 ug/mL)
ORF Nucleotide Sequence:	>RC202984 ORF sequence Red=Cloning site Blue=ORF Green=Tags(s)

TTTTGTAATACGACTCACTATAGGGCGGCCGGAATTCGTCGACTGGATCCGGTACCGAGGAGATCTGCC  
GCC**CGGATCGCC**

ATGCCGCTGGGCCTGAAGCCACCTGCAGCGTATGCAAGACCACGTCGTCTCCATGTGGAAGAAGGGAG  
CGCAGGGGGAGATCCTCTGCCATCATTGCACTGGCCGGGGCGGCGGGCAGCGGGGGCGCAGGGCTCGGG  
GGCGGCTGGAGGGACTGGGGCAGCGGGCGGGCGGGCTTCGGCGCGGCGACCTTCGCCAGCACTCCGCC  
ACCCCTCCGAGACCAACGGGGCGGGGGCGGCAAGCAGAGTAAGCAGGAAATTCACAGGAGGTCTGCTC  
GGCTCAGAAACACTAAATACAAATCTGCTCCGGCTGCTGAAAAGAAAGTCTCCACCAAAGAAAAGGGAG  
AAGACATATATTTAAATTGAAAAATCCCATCAAAGCTCCTGAGTCAGTTTCCACTATAATCACTGCAGAA  
TCAATCTTCTACAAGGGAGTATATTACCAAATGGTGATGTTGTTTCTGTGATTGATGAACAAGATGGAA  
AGCCCTACTATGCTCAAATCAGAGGTTTTATCCAGGACCAGTATTGCGAGAAGAGTGCAGCACTGACGTG  
GCTCATTCCCTACCCTCTCTAGCCCCAGAGACCAATTTGATCCCGCCTCCTATATCATAGGGCCAGAGGAA  
GATCTTCCAAGGAAGATGGAATACTTGGAAATTTGTTTGTGCATGCACCTTCTGAGTATTTCAAGTCACGGT  
CATCACCATTTCCACAGTTCACCACAGACCAGAGAAGGGCTACATATGGACTCATGTTGGGCTACTCC  
TGCAATAACAATTAAGGAATCAGTTGCCAACCATTTG

**ACGCGT**ACGCGGCGCTCGAGCAGAAACTCATCTCAGAAGAGGATCTGGCAGCAAATGATATCCTGGATT  
ACAAGGATGACGACGATAAGGTTTAA



[View online »](#)

**Protein Sequence:** >RC202984 protein sequence  
 Red=Cloning site Green=Tags(s)

MPLGLKPTCSVCKTTSSSMWKKGAQGEILCHHCTGRGGAGSGGAGSGAAGGTGGSGGGGFGAATFASTSA  
 TPPQSNNGGGGKQSKQEIHRRSARLRNTKYKSAPAAEKKVSTKKGRRRHIFKLNPKAPESVSTIITAE  
 SIFYKGVYYQIGDVVSVIDEQDGKPYAQIRGFIQDQYCEKSAALTWLIPTLSSPRDQFDPASYIIGPEE  
 DLPRKMEYLEFVCHAPSEYFKSRSSPFPTVPTREPKGYIWITHVGPTPAITIKESVANHL

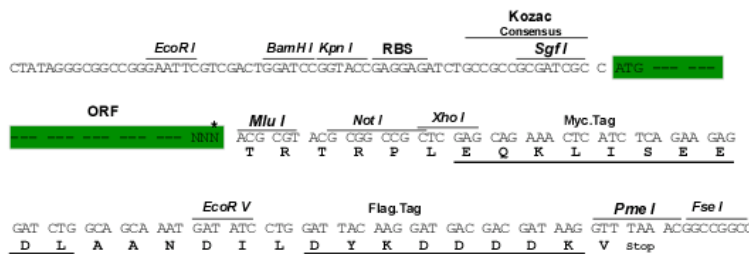
TRTRPLEQKLISEEDLAANDILDYKDDDDKV

**Chromatograms:** [https://cdn.origene.com/chromatograms/mk6146\\_c10.zip](https://cdn.origene.com/chromatograms/mk6146_c10.zip)

**Restriction Sites:** SgfI-MluI

**Cloning Scheme:**

Cloning sites used for ORF Shuttling:



\* The last codon before the Stop codon of the ORF

**ACCN:** NM\_021167

**ORF Size:** 807 bp

**OTI Disclaimer:** The molecular sequence of this clone aligns with the gene accession number as a point of reference only. However, individual transcript sequences of the same gene can differ through naturally occurring variations (e.g. polymorphisms), each with its own valid existence. This clone is substantially in agreement with the reference, but a complete review of all prevailing variants is recommended prior to use. [More info](#)

**OTI Annotation:** This clone was engineered to express the complete ORF with an expression tag. Expression varies depending on the nature of the gene.

**Components:** The ORF clone is ion-exchange column purified and shipped in a 2D barcoded Matrix tube containing 10ug of transfection-ready, dried plasmid DNA (reconstitute with 100 ul of water).

**Reconstitution Method:**

1. Centrifuge at 5,000xg for 5min.
2. Carefully open the tube and add 100ul of sterile water to dissolve the DNA.
3. Close the tube and incubate for 10 minutes at room temperature.
4. Briefly vortex the tube and then do a quick spin (less than 5000xg) to concentrate the liquid at the bottom.
5. Store the suspended plasmid at -20°C. The DNA is stable for at least one year from date of shipping when stored at -20°C.

**RefSeq:** [NM\\_021167.5](#)

**RefSeq Size:** 4597 bp

**RefSeq ORF:** 810 bp

**Locus ID:** 57798

**UniProt ID:** [Q8WUU5](#)

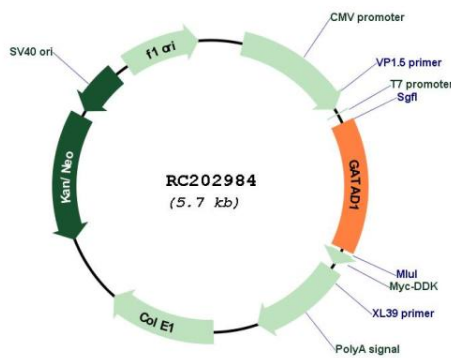
**Cytogenetics:** 7q21.2

**Protein Families:** Transcription Factors

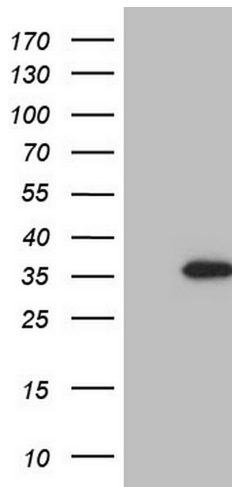
**MW:** 28.7 kDa

**Gene Summary:** The protein encoded by this gene contains a zinc finger at the N-terminus, and is thought to bind to a histone modification site that regulates gene expression. Mutations in this gene have been associated with autosomal recessive dilated cardiomyopathy. Alternatively spliced transcript variants have been found for this gene. [provided by RefSeq, Jun 2012]

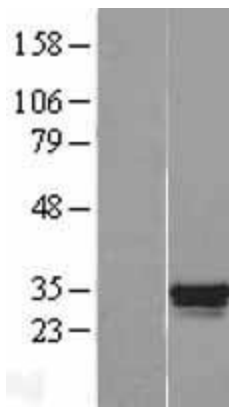
**Product images:**



Circular map for RC202984



HEK293T cells were transfected with the pCMV6-ENTRY control (Cat# [PS100001], Left lane) or pCMV6-ENTRY GATAD1 (Cat# RC202984, Right lane) cDNA for 48 hrs and lysed. Equivalent amounts of cell lysates (5 ug per lane) were separated by SDS-PAGE and immunoblotted with anti-GATAD1(Cat# [TA804929]). Positive lysates [LY402849] (100ug) and [LC402849] (20ug) can be purchased separately from OriGene.



Western blot validation of overexpression lysate (Cat# [LY402849]) using anti-DDK antibody (Cat# [TA50011-100]). Left: Cell lysates from untransfected HEK293T cells; Right: Cell lysates from HEK293T cells transfected with RC202984 using transfection reagent MegaTran 2.0 (Cat# [TT210002]).