

Product datasheet for **RC202975**

CHCHD6 (NM_032343) Human Tagged ORF Clone

Product data:

Product Type:	Expression Plasmids
Product Name:	CHCHD6 (NM_032343) Human Tagged ORF Clone
Tag:	Myc-DDK
Symbol:	CHCHD6
Synonyms:	CHCM1; Mic25; MICOS25; PPP1R23
Mammalian Cell Selection:	Neomycin
Vector:	pCMV6-Entry (PS100001)
E. coli Selection:	Kanamycin (25 ug/mL)
ORF Nucleotide Sequence:	>RC202975 ORF sequence Red=Cloning site Blue=ORF Green=Tags(s)

TTTTGTAATACGACTCACTATAGGGCGGCCGGAATTCGTCGACTGGATCCGGTACCGAGGAGATCTGCC
GCC**CGATCGCC**

ATGGGGAGCACGGAGAGCAGCGAGGGCCGAGGGTGTCTTCGGAGTGGACGAGGAGGAGCGGGTCCGGG
TGCTGCAGGGTGTCCGGCTGTCTGAAAACGTGGTGAACCGCATGAAGGAGCCCAGCTCTCCACCCCTGC
TCCCACATCTTCTACCTTTGGCCTTCAAGATGGCAACTTGAGAGCCCCTCACAAAGAATCCACACTGCC
AGGTCCGGGAGCAGTGGTGGCCAGCAGCCCTCAGGGATGAAGGAGGGTGTCAAGAGGTATGAACAGGAGC
ATGCTGCTATCCAGGATAAGCTTCTCAGGTGGCAAAGAGGGAAAGAGAGGCTGCCACCAAGCACTCCAA
GGCATCCCTGCCACGGGCGAAGGCAGCATCAGCCATGAGGAGCAGAAGTCAGTCCGGCTGGCCAGGGAG
CTGGAGAGCAGAGAGGCAGAGCTAAGACGCCGTGACACCTTCTACAAGGAGCAGCTGGAGCGTATTGAGA
GGAAGAATGCTGAGATGTATAAACTGTCTTCAGAGCAATTCCATGAGGCAGCCTCAAAGATGGAGAGCAC
AATAAAGCCCCGAGGGTGGAGCCCGTCTGCTCAGGGTTGAGGCCAGATTCTCCACTGCTACCGAGAT
CGCCCGCATGAGGTGCTGCTGTGCTCGGACCTGGTCAAGGCATACCAGCGCTGCGTGAGCGCCGCCACA
AGGGC

ACGCGTACGCGGCCGCTCGAGCAGAACTCATCTCAGAAGAGGATCTGGCAGCAAATGATATCCTGGATT
ACAAGGATGACGACGATAAGGTTTAA



[View online »](#)

Protein Sequence: >RC202975 protein sequence
Red=Cloning site Green=Tags(s)

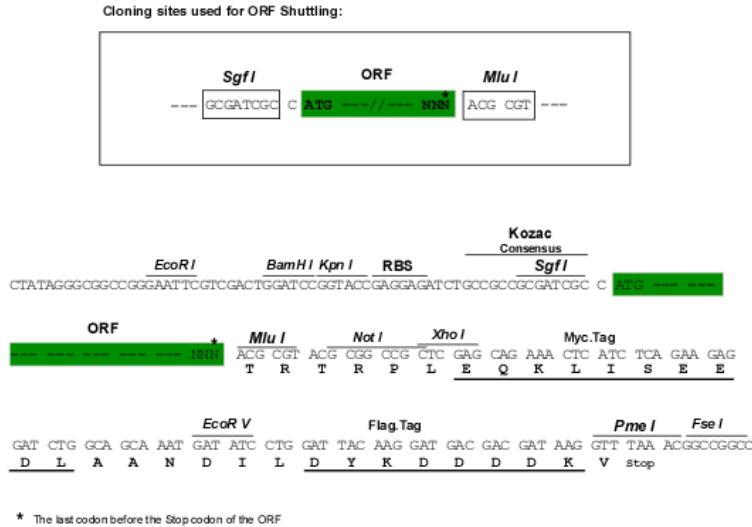
MGSTESSEGRVVSFGVDEEERVRLQGVRLSENVVNRMKEPSSPPPAPTSSSTFGLQDGNLRAPHKESTLP
 RSGSSGGQQPSGMKEGVKRYEQEHAAIQDKLFQVAKREREAAATKHSKASLPTGEGSISHEEQKSVRLARE
 LESREAELRRRDTFYKEQLERIERKNAEMYKLSSEQFHEAASKMESTIKPRRVEPVCSGLQAQILHCYRD
 RPHEVLLCSDLVKAYQRCVSAAHKG

TRTRPLEQKLISEEDLAANDILDYKDDDDKV

Chromatograms: https://cdn.origene.com/chromatograms/mk6579_c12.zip

Restriction Sites: SgfI-MluI

Cloning Scheme:



ACCN: NM_032343

ORF Size: 705 bp

OTI Disclaimer: The molecular sequence of this clone aligns with the gene accession number as a point of reference only. However, individual transcript sequences of the same gene can differ through naturally occurring variations (e.g. polymorphisms), each with its own valid existence. This clone is substantially in agreement with the reference, but a complete review of all prevailing variants is recommended prior to use. [More info](#)

OTI Annotation: This clone was engineered to express the complete ORF with an expression tag. Expression varies depending on the nature of the gene.

Components: The ORF clone is ion-exchange column purified and shipped in a 2D barcoded Matrix tube containing 10ug of transfection-ready, dried plasmid DNA (reconstitute with 100 ul of water).

Reconstitution Method:

1. Centrifuge at 5,000xg for 5min.
2. Carefully open the tube and add 100ul of sterile water to dissolve the DNA.
3. Close the tube and incubate for 10 minutes at room temperature.
4. Briefly vortex the tube and then do a quick spin (less than 5000xg) to concentrate the liquid at the bottom.
5. Store the suspended plasmid at -20°C. The DNA is stable for at least one year from date of shipping when stored at -20°C.

RefSeq: [NM_032343.3](#)

RefSeq Size: 1020 bp

RefSeq ORF: 708 bp

Locus ID: 84303

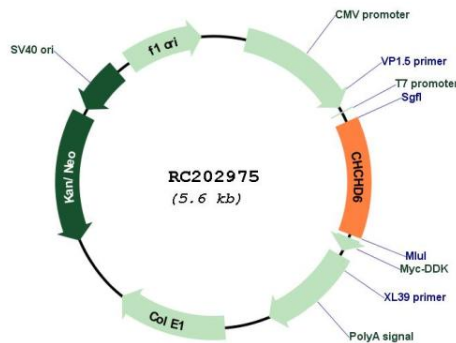
UniProt ID: [Q9BRQ6](#)

Cytogenetics: 3q21.3

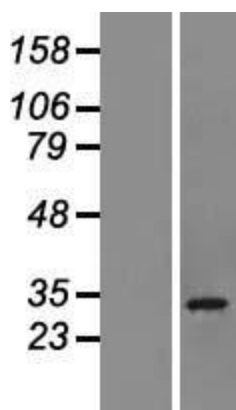
MW: 26.5 kDa

Gene Summary: Component of the MICOS complex, a large protein complex of the mitochondrial inner membrane that plays crucial roles in the maintenance of crista junctions, inner membrane architecture, and formation of contact sites to the outer membrane.[UniProtKB/Swiss-Prot Function]

Product images:



Circular map for RC202975



Western blot validation of overexpression lysate (Cat# [LY410180]) using anti-DDK antibody (Cat# [TA50011-100]). Left: Cell lysates from untransfected HEK293T cells; Right: Cell lysates from HEK293T cells transfected with RC202975 using transfection reagent MegaTran 2.0 (Cat# [TT210002]).



Coomassie blue staining of purified CHCHD6 protein (Cat# [TP302975]). The protein was produced from HEK293T cells transfected with CHCHD6 cDNA clone (Cat# RC202975) using MegaTran 2.0 (Cat# [TT210002]).