

Product datasheet for RC202972

PRADC1 (NM_032319) Human Tagged ORF Clone

Product data:

Product Type: Expression Plasmids
Product Name: PRADC1 (NM_032319) Human Tagged ORF Clone
Tag: Myc-DDK
Symbol: PRADC1
Synonyms: C2orf7; PAP21
Mammalian Cell Selection: Neomycin
Vector: pCMV6-Entry (PS100001)
E. coli Selection: Kanamycin (25 ug/mL)
ORF Nucleotide Sequence: >RC202972 ORF sequence
 Red=Cloning site Blue=ORF Green=Tags(s)

TTTTGTAATACGACTCACTATAGGGCGCCGGGAATTCGTCGACTGGATCCGGTACCGAGGAGATCTGCC
 GCC**CGGATCGCC**

ATGGTCCCCGGCGCCGGGGCTGGTGTGTCTCGTCTGGCTCCCCGCGTGCGTCGGGCCACGGCT
 TCCGTATCCATGATTATTTGACTTTCAAGTGCTGAGTCTGGGACATTCGATACATCTTCACAGCCAC
 ACCTGCCAAGGACTTTGGTGGTATCTTTCACACAAGGTATGAGCAGATTCACCTTGTCGCCGCTGAACCT
 CCAGAGGCTGCGGGAACTCAGCAACGGTTTCTCATCCAGGACCAGATTGCTCTGGTGGAGAGGGGGG
 GCTGCTCCTTCTCCAAGACTCGGGTGGTCCAGGAGCACGGCGGGCGGGTGTATCATCTCTGACAA
 CGCAGTTGACAATGACAGCTTCTACGTGGAGATGATCCAGGACAGTACCCAGCGCACAGCTGACATCCCC
 GCCCTTCTCTGCTCGGCCGAGACGGCTACATGATCCGCCGCTCTCTGGAACAGCATGGGCTGCCATGGG
 CCATCATTTCCATCCCAGTCAATGTCACCAGCATCCCCACCTTTGAGCTGCTGCAACCGCCTGGACCTT
 CTGG

ACGCGTACGCGGCCGCTCGAGCAGAACTCATCTCAGAAGAGGATCTGGCAGCAATGATATCCTGGATT
 ACAAGGATGACGACGATAAGGTTTAA

Protein Sequence: >RC202972 protein sequence
 Red=Cloning site Green=Tags(s)

MVPGAAGWCLVLWLPACVAAHGFRIDYLYFQVLSPGDIRYIFTATPAKDFGGIFHTRYEQIHLVPAEP
 PEACGELSNQFFIQDQIALVERGGCSFLSKTRVQEHGGRAVIIISDNAVNDNSFYVEMIQDSTQRTADIP
 ALFLLGRDGYMIRRSLEQHLPWAIISIPVNVTSIPTFELLQPPWTFW

TRTRPLEQKLISEEDLAANDILDYKDDDDKV



[View online »](#)

Chromatograms: https://cdn.origene.com/chromatograms/mk6411_a04.zip

Restriction Sites: SgfI-MluI

Cloning Scheme:



ACCN: NM_032319

ORF Size: 564 bp

OTI Disclaimer: The molecular sequence of this clone aligns with the gene accession number as a point of reference only. However, individual transcript sequences of the same gene can differ through naturally occurring variations (e.g. polymorphisms), each with its own valid existence. This clone is substantially in agreement with the reference, but a complete review of all prevailing variants is recommended prior to use. [More info](#)

OTI Annotation: This clone was engineered to express the complete ORF with an expression tag. Expression varies depending on the nature of the gene.

Components: The ORF clone is ion-exchange column purified and shipped in a 2D barcoded Matrix tube containing 10ug of transfection-ready, dried plasmid DNA (reconstitute with 100 ul of water).

Reconstitution Method:

1. Centrifuge at 5,000xg for 5min.
2. Carefully open the tube and add 100ul of sterile water to dissolve the DNA.
3. Close the tube and incubate for 10 minutes at room temperature.
4. Briefly vortex the tube and then do a quick spin (less than 5000xg) to concentrate the liquid at the bottom.
5. Store the suspended plasmid at -20°C. The DNA is stable for at least one year from date of shipping when stored at -20°C.

RefSeq: [NM_032319.3](#)

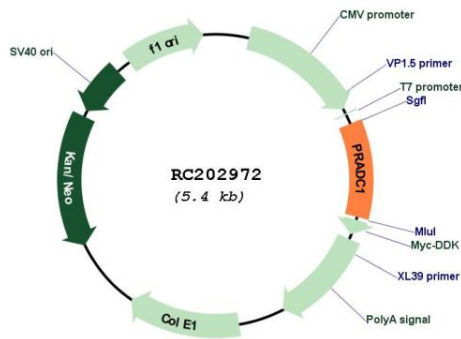
RefSeq Size: 1105 bp

RefSeq ORF: 567 bp

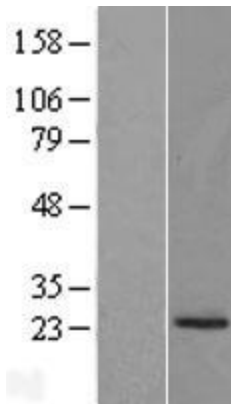
Locus ID: 84279

UniProt ID: [Q9BSG0](#)
Cytogenetics: 2p13.2
Domains: PA
Protein Families: Protease, Transmembrane
MW: 21 kDa
Gene Summary: Plays a role in the modulation of physical activity and adiposity.[UniProtKB/Swiss-Prot Function]

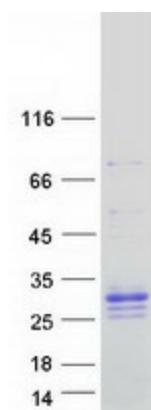
Product images:



Circular map for RC202972



Western blot validation of overexpression lysate (Cat# [LY410218]) using anti-DDK antibody (Cat# [TA50011-100]). Left: Cell lysates from untransfected HEK293T cells; Right: Cell lysates from HEK293T cells transfected with RC202972 using transfection reagent MegaTran 2.0 (Cat# [TT210002]).



Coomassie blue staining of purified PRADC1 protein (Cat# [TP302972]). The protein was produced from HEK293T cells transfected with PRADC1 cDNA clone (Cat# RC202972) using MegaTran 2.0 (Cat# [TT210002]).