

Product datasheet for **RC202971**

ZKSCAN3 (NM_024493) Human Tagged ORF Clone

Product data:

Product Type:	Expression Plasmids
Product Name:	ZKSCAN3 (NM_024493) Human Tagged ORF Clone
Tag:	Myc-DDK
Symbol:	ZKSCAN3
Synonyms:	dj874C20.1; dj874C20.1.; ZF47; zfp-47; Zfp47; ZFP306; ZNF306; ZNF309; ZSCAN13; ZSCAN35
Mammalian Cell Selection:	Neomycin
Vector:	pCMV6-Entry (PS100001)
E. coli Selection:	Kanamycin (25 ug/mL)



[View online »](#)

ORF Nucleotide Sequence:

>RC202971 ORF sequence
 Red=Cloning site Blue=ORF Green=Tags(s)

TTTTGTAATACGACTCACTATAGGGCGGCCGGAATTCGTCGACTGGATCCGGTACCGAGGAGATCTGCC
 GCC**CGGATCGCC**

ATGGCTAGAGAATTAAGTAAAGCACAGCCTGGATGCCAGTCTACAGAAGACCAGATGGAGCTTCTGG
 TCATAAAGGTGGAGGAAGAAGAAGCCGGTTTTCCAGTAGCCAGATCTGGGTTCTGAGGGCTCCCGCA
 GCGCTTCCGAGGCTTCCGCTACCCGAGGCTGCAGGCCCCCGCAGGCGTGAGTCGGCTCCGAGAGCTC
 TGCCGACAGTGGCTGCAGCCTGAGATGCACAGCAAGGAGCAGATCCTGGAGCTGCTGGTCTGGAGCAGT
 TCCTGACCATCCTGCCGGGAATCTGCAGAGCTGGGTGCGGGAGCAGCATCCAGAGAGCGGGGAGGAGGT
 GGTGGTCTATTGGAGTATTTGGAGAGGACGCTGGATGAGCCGGCGCCGAGTTTCAGTGTGGACCAG
 GGGCAAGAACTGCTCTGTTGCAAGATGGCACTATTGACACCAGCCCCAGGGTCACAAAGTAGCCAATTT
 AGCTAATGAAGGCTCTGCTCAAGCATGAATCTGTGGGATCCCAGCCTTTACAAGATAGAGTTCTCCAGT
 CCCCATGCTTGCCATGGAGGATGCTGCAGAGAAGATGCAGTGGTAGTTCTAGGCTTACTCCAGAGTCC
 CAGGGGTTGTTGAAAGTGAAGATGTGGCCTGACCCTCACCCCTGAATGGACACAGCAGGATTCATCTC
 AGGGGAATCTCTGTAGAGATGAAAAGCAGGAGAACCATGGCAGCCTGGTCTCCCTGGGTGATGAAAAACA
 GACTAAGAGCAGGGACTTGCCTCCAGCTGAGGAGCTTCCAGAAAAGGAGCATGGGAAGATATCGTGCCAC
 CTGAGAGAAGACATTGCCAGATTCCTACATGTGCAGAAGCTGGTGAACAGGAGGGCAGGCTACAAAGAA
 AGCAGAAAAATGCCACAGGAGGGAGGGCGGCACATCTGCCATGAATGTGGAAGAGTTTTGCTCAAAGCTC
 AGGCCTGAGTAAACACAGGAGAATCCACACTGGTGAAGAACCTACGAATGTGAAGAGTGTGGCAAAGCC
 TTCATTTGGGAGCTCTGCCCTTGTATTATCAGAGAGTCCACACTGGTGAAGAACCATATGAGTGTGAAG
 AATGTGGTAAGGCCTTCAGTCAATAGCTCAGACCTTATCAAGCATCAGAGAACCACACTGGGAGAGGCC
 CTATGAGTGTGATGACTGTGGGAAGACCTTCAGCCAGAGCTGCAGCCTCCTTGAACATCACAGAATCCAC
 ACTGGGGAGAAGCCGTATCAGTGCAGTATGTGTGGCAAAGCCTTTAGCGAAGTTCACATCTCTGAGAC
 ATCAGAGGATCCATACTGGGGATAAAAAATGTTCAAGAACCTGAGCAGGGAGAGGCCTGGAAAAGTAGGAT
 GGAAAGCCAGTTGGAAAATGTTGAAACTCCCATGTCTTATAAATGTAATGAGTGTGAAAGAAGTTTCACT
 CAGAATACAGGCCTCATTGAACATCAAAAAATCCACACTGGTGAAGAACCTATCAGTGTAAATGCGTGTG
 GAAAAGGCTTACCCGAATTTACATCTGTTCAACATCAGAGAAGCCATGTAGGAAAAACATCTATC
 ACAG

ACGCGTACGCGGCCGCTCGAGCAGAAACTCATCTCAGAAGAGGATCTGGCAGCAAATGATATCCTGGATT
 ACAAGGATGACGACGATAAGGTTTAA

Protein Sequence:

>RC202971 protein sequence
 Red=Cloning site Green=Tags(s)

MARELSESTALDAQSTEDQMELLVIKVEEEEAGFPSSPDLGSEGSRERFRGFRYPEAAGPREALSRLREL
 CRQWLQPEMHSKEQILELLVLEQFLTILPGLNLSQSWVREQHPESGEEVVVLLLEYLERQLDEPAPQVSGVDQ
 GQELLCKMALLTPAPGSQSSQFLMKALLKHESVGSQPLQDRVLQVPMLAHGGCCREDAYVASRLTPES
 QGLLKVEDVALTLTPEWTQQDSSQGNLCRDEKQENHGSLSVSLGDEKQTKSRDLPPAEELPEKEHGKISCH
 LREDIAQIPTCAEAGEQEGRLQRKQKNATGRRRHICHECGKSFAQSSGLSKHRRIHTEKPYECEECGKA
 FIGSSALVIHQRVHTGEKPYECEECGKAFSHSSDLIKHQRTHTGEKPYECDDCGKTFSSQSCSLEHHRH
 TGEKPYQCSMCGKAFRRSSHLLRHQRIHTGDKNVQEPEQGEAWKSRMESQLENVTPMSYKCNECERSFT
 QNTGLIEHQIHTGEKPYQCNACGKGFTRISYLVQHQRSVHGKNILSQ

TRTRPLEQKLISEEDLAANDILDYKDDDDKV

Chromatograms:

https://cdn.origene.com/chromatograms/mk6674_a12.zip

Restriction Sites:

Sgfl-MluI

Cloning Scheme:


ACCN: NM_024493

ORF Size: 1614 bp

OTI Disclaimer: The molecular sequence of this clone aligns with the gene accession number as a point of reference only. However, individual transcript sequences of the same gene can differ through naturally occurring variations (e.g. polymorphisms), each with its own valid existence. This clone is substantially in agreement with the reference, but a complete review of all prevailing variants is recommended prior to use. [More info](#)

OTI Annotation: This clone was engineered to express the complete ORF with an expression tag. Expression varies depending on the nature of the gene.

Components: The ORF clone is ion-exchange column purified and shipped in a 2D barcoded Matrix tube containing 10ug of transfection-ready, dried plasmid DNA (reconstitute with 100 ul of water).

- Reconstitution Method:**
1. Centrifuge at 5,000xg for 5min.
 2. Carefully open the tube and add 100ul of sterile water to dissolve the DNA.
 3. Close the tube and incubate for 10 minutes at room temperature.
 4. Briefly vortex the tube and then do a quick spin (less than 5000xg) to concentrate the liquid at the bottom.
 5. Store the suspended plasmid at -20°C. The DNA is stable for at least one year from date of shipping when stored at -20°C.

Note: Plasmids are not sterile. For experiments where strict sterility is required, filtration with 0.22um filter is required.

RefSeq: [NM_024493.1](#), [NP_077819.1](#)

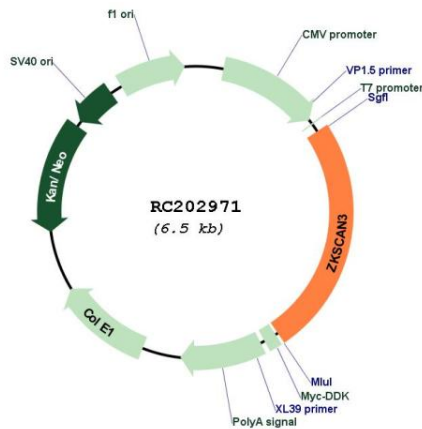
RefSeq Size: 4725 bp

RefSeq ORF: 1617 bp

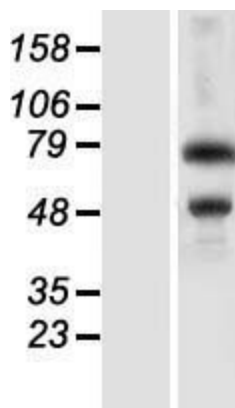
Locus ID: 80317

UniProt ID: [Q9BRR0](#)
Cytogenetics: 6p22.1
Domains: KRAB, LER, zf-C2H2
Protein Families: Transcription Factors
MW: 60.6 kDa
Gene Summary: Transcriptional factor that binds to the consensus sequence 5'-[GT][AG][AGT]GGGG-3' and acts as a repressor of autophagy. Specifically represses expression of genes involved in autophagy and lysosome biogenesis/function such as MAP1LC3B, ULK1 or WIPI2. Associates with chromatin at the ITGB4 and VEGF promoters. Also acts as a transcription activator and promotes cancer cell progression and/or migration in various tumors and myelomas. [UniProtKB/Swiss-Prot Function]

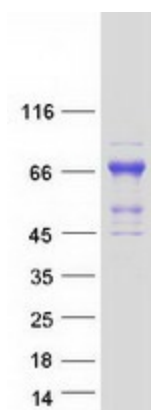
Product images:



Circular map for RC202971



Western blot validation of overexpression lysate (Cat# [LY411284]) using anti-DDK antibody (Cat# [TA50011-100]). Left: Cell lysates from untransfected HEK293T cells; Right: Cell lysates from HEK293T cells transfected with RC202971 using transfection reagent MegaTran 2.0 (Cat# [TT210002]).



Coomassie blue staining of purified ZKSCAN3 protein (Cat# [TP302971]). The protein was produced from HEK293T cells transfected with ZKSCAN3 cDNA clone (Cat# RC202971) using MegaTran 2.0 (Cat# [TT210002]).