

## Product datasheet for **RC202968**

### TSPAN18 (NM\_001031730) Human Tagged ORF Clone

#### Product data:

Product Type:	Expression Plasmids
Product Name:	TSPAN18 (NM_001031730) Human Tagged ORF Clone
Tag:	Myc-DDK
Symbol:	TSPAN18
Synonyms:	tetraspanin 18; tetraspanin similiar to uroplakin 1; TSPAN
Mammalian Cell Selection:	Neomycin
Vector:	pCMV6-Entry (PS100001)
E. coli Selection:	Kanamycin (25 ug/mL)
ORF Nucleotide Sequence:	>RC202968 ORF sequence Red=Cloning site Blue=ORF Green=Tags(s)

TTTTGTAATACGACTCACTATAGGGCGCCGGGAATTCGTCGACTGGATCCGGTACCGAGGAGATCTGCC  
GCC**CGGATCGCC**

ATGGAAGGCGACTGTCTGAGCTGCATGAAGTATCTGATGTTTGTATTCAATTTCTTCATATTTCTGGGCG  
GGGCTGCCTGCTGGCCATCGGCATCTGGGTATGGTGGACCCACCGGCTTCCGGGAGATCGTGGCTGC  
CAATCCTCTGCTCCTCACGGGCGCCTACATCCTCCTGGCCATGGGGGCTGCTTTTCTGCTCGGCTTC  
CTGGGCTGCTGCGGGCCGTCCGTGAGAACAAAGTGTCTGCTGCTATTTTTCTTCTGTTTCATCCTGATCA  
TCTTCTGGCAGAGCTCTCAGCAGCCATCCTGGCCTTCATCTTCAGGGAAAATCTCACCCGAGAATTCTT  
CACCAAGGAGCTCACCAAGCACTACCAGGGCAATAACGACACAGACGTCTTCTCTGCCACCTGGAACCTCG  
GTCATGATCACATTTGGTTGCTGCGGGGTCAACGGGCTGAAGACTTTAAGTTTGCATCTGTGTTTCGAC  
TCCTGACCCTGGATAGTGAAGAGGTGCCGGAGGCTGCTGCCGGAGGGAACCCAAAGTCGGGACGGGGT  
CCTGCTGAGCCGGGAGGAGTGCCCTCCTGGGAAGGAGCCTATTCTAAACAAGCAGGGCTGTTACACGGTG  
ATCCTCAACACCTTCGAGACCTACGTCTACTTGGCCGGAGCCCTTGCCATCGGGTACTGGCCATCGAGG  
AAGAAAGAGCTCATTCTGTCTCACAAAGCCACGGCATCCTGTATCAGCTTCCAGCCTCCCCTCAGGCTTT  
CCAGTCACCAGGGACTCGGAGCCACAGCC

**ACGCGT**ACGCGGCCGCTCGAGCAGAAACTCATCTCAGAAGAGGATCTGGCAGCAAATGATATCCTGGATT  
ACAAGGATGACGACGATAAGGTTTAA



[View online »](#)

**Protein Sequence:** >RC202968 protein sequence  
 Red=Cloning site Green=Tags(s)

MEGDCLSCMKYLMFVFNFFIFLGGACLLAIGIWMVDPTGFREIVAANPLLLTGAYILLAMGLLFLLGF  
 LGCCGAVRENKCLLLFFFLFILIIFLAELSAAILAFIFRENLTREFFTKELTKHYQGNNDDTVFSATWNS  
 VMITFGCCGVNPGEDFKFASVFRLLTLDSEEVPEACCRREPQSRDGVLLSREECLLGRSLFLNKQGCYTV  
 ILNTFETYVYLAGALAIQVLAIEEERAHSVSQATGILYQLPASPAFQSPGTLGATA

TRTRPLEQKLISEEDLAANDILDYKDDDDKV

**Chromatograms:** [https://cdn.origene.com/chromatograms/mk6435\\_a05.zip](https://cdn.origene.com/chromatograms/mk6435_a05.zip)

**Restriction Sites:** SgfI-MluI

**Cloning Scheme:**



**ACCN:** NM\_001031730

**ORF Size:** 801 bp

**OTI Disclaimer:** The molecular sequence of this clone aligns with the gene accession number as a point of reference only. However, individual transcript sequences of the same gene can differ through naturally occurring variations (e.g. polymorphisms), each with its own valid existence. This clone is substantially in agreement with the reference, but a complete review of all prevailing variants is recommended prior to use. [More info](#)

**OTI Annotation:** This clone was engineered to express the complete ORF with an expression tag. Expression varies depending on the nature of the gene.

**Components:** The ORF clone is ion-exchange column purified and shipped in a 2D barcoded Matrix tube containing 10ug of transfection-ready, dried plasmid DNA (reconstitute with 100 ul of water).

**Reconstitution Method:**

1. Centrifuge at 5,000xg for 5min.
2. Carefully open the tube and add 100ul of sterile water to dissolve the DNA.
3. Close the tube and incubate for 10 minutes at room temperature.
4. Briefly vortex the tube and then do a quick spin (less than 5000xg) to concentrate the liquid at the bottom.
5. Store the suspended plasmid at -20°C. The DNA is stable for at least one year from date of shipping when stored at -20°C.

**RefSeq:** [NM\\_001031730.1](#), [NP\\_001026900.1](#)

**RefSeq Size:** 1198 bp

**RefSeq ORF:** 803 bp

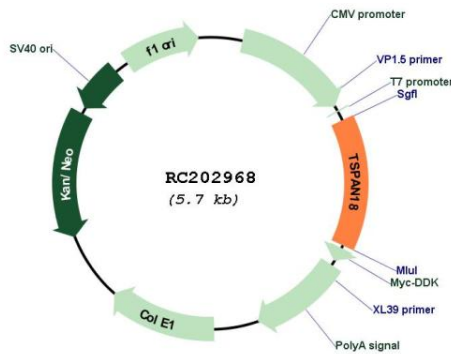
**Locus ID:** 90139

**Cytogenetics:** 11p11.2

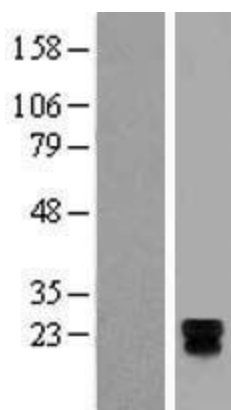
**Protein Families:** Transmembrane

**MW:** 29.4 kDa

**Product images:**



Circular map for RC202968



Western blot validation of overexpression lysate (Cat# [LY422177]) using anti-DDK antibody (Cat# [TA50011-100]). Left: Cell lysates from untransfected HEK293T cells; Right: Cell lysates from HEK293T cells transfected with RC202968 using transfection reagent MegaTran 2.0 (Cat# [TT210002]).