

## Product datasheet for **RC202966**

### ZNF2 (NM\_021088) Human Tagged ORF Clone

#### Product data:

Product Type:	Expression Plasmids
Product Name:	ZNF2 (NM_021088) Human Tagged ORF Clone
Tag:	Myc-DDK
Symbol:	ZNF2
Synonyms:	A1-5; Zfp661; ZNF661
Mammalian Cell Selection:	Neomycin
Vector:	pCMV6-Entry (PS100001)
E. coli Selection:	Kanamycin (25 ug/mL)



[View online »](#)

**ORF Nucleotide Sequence:**

>RC202966 ORF sequence  
 Red=Cloning site Blue=ORF Green=Tags(s)

TTTTGTAATACGACTCACTATAGGGCGGCCGGAATTCGTCGACTGGATCCGGTACCGAGGAGATCTGCC  
 GCC**CGGATCGCC**

ATGGCTGTGTGTCTCCGACCACCAGATGCCAGGAATCAGTGACATTCTGAAGACGTTGCCGTGGTTTTCA  
 CAGATGAAGAGTGGAGTGTCTGGTCCCATACAGAGGGACCTCTACAAGGAGGTGATGCTGGAGAACTA  
 TAACAGCATTGTGTCATTGGGCCTTCCAGTTCCTCAACCTGATGTGATTTTCCAATTGAAGAGAGGGGAC  
 AAGCCGTGGATGGTAGATCTTCATGGGTCTGAGGAGAGAGAATGGCCAGAGAGTGTCTCTAGACTGGG  
 AAATAAGCCTGAGATTCACGATGCTTCAGACAAAAATCAGAAGGATCATTGAGGGAATGCCTTGGAAAG  
 GCAAAGTCTCTGTGCTAAATTTGAAGTTCATACACCAATGGCAGGATGGGAACAGAAAAGCAAAGC  
 CCTTCAGGGGAGACTCGTAAGAAATCCCTCTCCGGGACAAGGCTTGCAGGACGGTACGCGCTGTCCA  
 GGGAAATCTCACTAAAGAGAGACACCAGGAATGCAGTACTGTGGGAAGACCTTTTTGACCCTCATC  
 CCTCACCCGCCATCAGAGGACTCACACTGGGAGAAGCCCTACGACTGCCGCGAGTGTGGGAAAGCCCTC  
 AGCCACAGGAGCAGCCTCAGCAGACATCTGATGTACACACTGGGAGAGCCCTACGAGTGCAGTGTGT  
 GCTCAAAAGCCTTCTTTGACCGTTCGTCCCTAACTGTCCATCAGCGAATTCACACTGGAGAGAAACCTT  
 TCAGTGAACGAGTGTGGAAAAGCCTTTTTGACCGTTCATCCCTTACTCGACACAGAGAATTCACACT  
 GGAGAAAGTCTTATGAATGTCATCAGTGTGGGAAAGCCTTTAGCCAGAAAAGTATTCTTACTCGCCATC  
 AGCTAATCCACTGGCAGGAAGCCTTATGAGTGTAAACGAGTGCAGGAAAGCTTTCTATGGTGTCTCGTC  
 TCTGAATAGACATCAGAAAGCTCATGCTGGGACCCTCGTATCAGTGTAAACGAGTGTGGCAAAGCTTTC  
 TTTGACCGCTCATCCCTTACACAGCATCAGAAGATCCACTGGAGACAAGCCACATGAATGCAGCGAAT  
 GCGGAAAAGCCTTTAGCCAGCGGTGCCGGCTCACGCGGCATCAGCGTGTCCACACGGGAGAGAAGCCCTT  
 TGAATGCACTGTGTGGGAAAGTTTTAGTTCAAAATCTTCTGTATTCAACATCAACGCGCTTACGCC  
 AACAGGGAATAGAC

**ACGCGT**ACGCGGCCGCTCGAGCAGAACTCATCTCAGAAGAGGATCTGGCAGCAAATGATATCCTGGATT  
 ACAAGGATGACGACGATAAGGTTTAA

**Protein Sequence:**

>RC202966 protein sequence  
 Red=Cloning site Green=Tags(s)

MAAVSPTTRCQESVTFEDVAVVFTDEEWSRLVPIQRDLYKEVMLENYNSIVSLGLPVPQPDVIFQLKRGD  
 KPWMVDLHGSEEREWPESVSLDWETKPEIHDASDKKSEGLRECLGRQSPLCPKFEVHTPNGRMGTEKQS  
 PSGETRKKSLSRDKGLRRRSALSREILTKERHQECSDCGKTFDFHSSLTRHQRTHTGEKPYDCRECGKAF  
 SHRSSLSRHLSHTGESPYECSVCSKAFFDRSSLTVHQRIHTGEKPFQCNECGKAFFDRSSLTRHQRIHT  
 GESPYECHQCGKAFSOKSILTRHQLIHTGRKPYECNECGKAFYGVSSLNHRQKAHAGDPRYQCNECGKAF  
 FDRSSLTQHQLIHTGDKPHECSECGKAFSQRCLTRHQRVHTGEKPFECTVCGKVFSSKSSVIQHQRYYA  
 KQGID

**TR**TRPLEQKLISEEDLAANDILDYKDDDDKV

**Chromatograms:**

[https://cdn.origene.com/chromatograms/mk6411\\_a12.zip](https://cdn.origene.com/chromatograms/mk6411_a12.zip)

**Restriction Sites:**

SgfI-MluI

**Cloning Scheme:**


**ACCN:** NM\_021088

**ORF Size:** 1275 bp

**OTI Disclaimer:** The molecular sequence of this clone aligns with the gene accession number as a point of reference only. However, individual transcript sequences of the same gene can differ through naturally occurring variations (e.g. polymorphisms), each with its own valid existence. This clone is substantially in agreement with the reference, but a complete review of all prevailing variants is recommended prior to use. [More info](#)

**OTI Annotation:** This clone was engineered to express the complete ORF with an expression tag. Expression varies depending on the nature of the gene.

**Components:** The ORF clone is ion-exchange column purified and shipped in a 2D barcoded Matrix tube containing 10ug of transfection-ready, dried plasmid DNA (reconstitute with 100 ul of water).

- Reconstitution Method:**
1. Centrifuge at 5,000xg for 5min.
  2. Carefully open the tube and add 100ul of sterile water to dissolve the DNA.
  3. Close the tube and incubate for 10 minutes at room temperature.
  4. Briefly vortex the tube and then do a quick spin (less than 5000xg) to concentrate the liquid at the bottom.
  5. Store the suspended plasmid at -20°C. The DNA is stable for at least one year from date of shipping when stored at -20°C.

**Note:** Plasmids are not sterile. For experiments where strict sterility is required, filtration with 0.22um filter is required.

**RefSeq:** [NM\\_021088.4](#)

**RefSeq Size:** 3980 bp

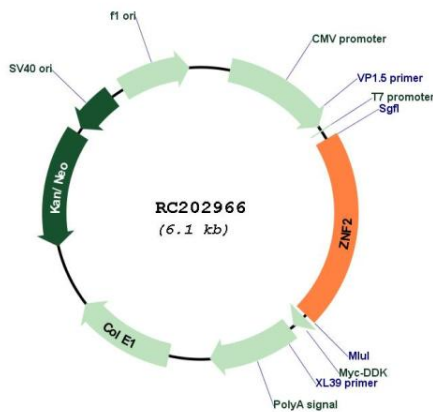
**RefSeq ORF:** 1278 bp

**Locus ID:** 7549

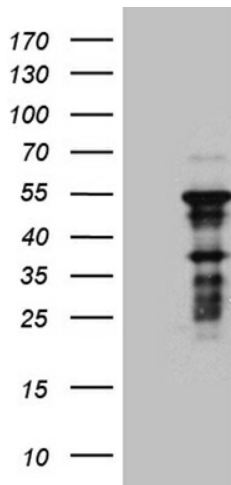
**UniProt ID:** [Q9BSG1](#)  
**Cytogenetics:** 2q11.1  
**Domains:** KRAB, zf-C2H2  
**Protein Families:** Transcription Factors  
**MW:** 48.7 kDa

**Gene Summary:** The protein encoded by this gene belongs to the C2H2-type zinc-finger protein family. The exact function of this gene is not known, however, zinc-finger proteins are known to interact with DNA and function as transcription regulators. Alternatively spliced transcript variants encoding different isoforms have been found for this gene. [provided by RefSeq, Apr 2014]

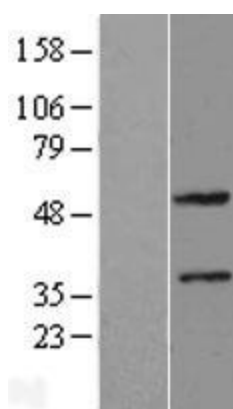
### Product images:



Circular map for RC202966



HEK293T cells were transfected with the pCMV6-ENTRY control (Cat# [PS100001], Left lane) or pCMV6-ENTRY ZNF2 (Cat# RC202966, Right lane) cDNA for 48 hrs and lysed. Equivalent amounts of cell lysates (5 ug per lane) were separated by SDS-PAGE and immunoblotted with anti-ZNF2 (Cat# [TA811013]). Positive lysates [LY412093] (100ug) and [LC412093] (20ug) can be purchased separately from OriGene.



Western blot validation of overexpression lysate (Cat# [LY412093]) using anti-DDK antibody (Cat# [TA50011-100]). Left: Cell lysates from untransfected HEK293T cells; Right: Cell lysates from HEK293T cells transfected with RC202966 using transfection reagent MegaTran 2.0 (Cat# [TT210002]).