

Product datasheet for RC202962

MGC12965 (NM_198519) Human Tagged ORF Clone

Product data:

Product Type:	Expression Plasmids
Product Name:	MGC12965 (NM_198519) Human Tagged ORF Clone
Tag:	Myc-DDK
Symbol:	MGC12965
Mammalian Cell Selection:	Neomycin
Vector:	pCMV6-Entry (PS100001)
E. coli Selection:	Kanamycin (25 ug/mL)
ORF Nucleotide Sequence:	>RC202962 ORF sequence Red=Cloning site Blue=ORF Green=Tags(s)

TTTTGTAATACGACTCACTATAGGGCGGCCGGAATTCGTCGACTGGATCCGGTACCGAGGAGATCTGCC
GCC**CGATCGCC**

ATGACCACCATATATGACCTGAAGAAACAGAAGGATAAACTGTTGAAGTTTTATGCTGAAAGTGATGAGC
AGATATTAATGAAAAATAGAAAAACACTTCATAAAGCTAAAAATGAAGATCTTGATCGTGTATTGAAAGA
GTGGATCCGTCAGCGTCGCAGTGAACACATGCCACTTAATGGTATGCTGATCATGAAACAAGCAAAGATA
TATCACAATGAACTAAAAATGAGGGGAAGTGTGAATATCAACAGGCTGGTTGCAGAAAATTTAAGAAAA
GACATGGCATTAAATTTTTAAAGACTTGTGGCAATAAAGCATCTGCTGGTCATGAAGCAACAGAGAAGTT
TACTGGCAAGTTCAGTAATGATGATGAACAAGATGGTAACCTTTGAAGATTTCAGTATGTCAAGTGAGAAA
AAAATAATGTCTGACCTCCTTACATATACAAAAATATACATCCAGAGACTGTCAGTAAGCTGGAAGAAG
AGGATATCAAAGATGTTTTTAACAGTAATAATGAGGCTCCAGTTGTTTCATTGTTCAATGGTGAAGT
AACAAAAATGGTTCTGAATCAAGATGATCATGATGATAATGATAATGAAGATGATGTTAACACTGCAGAA
AAAGTGCCTATAGACGACATGGTAAAAATGTGTGATGGGCTTATTAAGGACTAGAGCAGCATGCATTCA
TAACAGAGCAAGAAATCATGTCAGTTTAAAAATCAAAGAGAGACTTCTAAGACAAAAAGCATCATTAA
GAGGCAGATGACTCTGAAAGAAACATTTAAAAAGCCATCCAGAGGAATGCTTCTTCTCTACAGGAC
CCACTTCTGGTCCCTCAACTGCTTCTGATGCTTCTTCTCACCTAAAAATAAAA

ACGCGTACGCGGCCGCTCGAGCAGAAACTCATCTCAGAAGAGGATCTGGCAGCAAATGATATCCTGGATT
ACAAGGATGACGACGATAAGGTTTAA



[View online »](#)

Protein Sequence: >RC202962 protein sequence
Red=Cloning site Green=Tags(s)

MTTIYDLKKQKDKLLKFYAESDEQILMKNRKTLLHKAKNEDLDRVLKEWIRQRSEHMPLNGMLIMKQAKI
 YHNELKIEGNCEYSTGWLQKFKKRHGKFLKTCGNKASAGHEATEKFTGKFSNDDEQDGNFEGFSMSSEK
 KIMSDLITYTKNIHPETVSKLEEDIKDVFNSNNEAPVVHSLNGEVTKMVLNQDDHDDNDNEDDVNTAE
 KVPIDDMVKMCDGLIKGLEQHAFITEQEIMSVYKIKERLLRQKASLMRQMTLKETFKKAIQRNASSLQD
 PLLGPSTASDASSHLKIK

TRTRPLEQKLISEEDLAANDILDYKDDDDKV

Chromatograms: https://cdn.origene.com/chromatograms/mk6429_a02.zip

Restriction Sites: SgfI-MluI

Cloning Scheme:

Cloning sites used for ORF Shuttling:



* The last codon before the Stop codon of the ORF

ACCN: NM_198519

ORF Size: 894 bp

OTI Disclaimer: The molecular sequence of this clone aligns with the gene accession number as a point of reference only. However, individual transcript sequences of the same gene can differ through naturally occurring variations (e.g. polymorphisms), each with its own valid existence. This clone is substantially in agreement with the reference, but a complete review of all prevailing variants is recommended prior to use. [More info](#)

OTI Annotation: This clone was engineered to express the complete ORF with an expression tag. Expression varies depending on the nature of the gene.

Components: The ORF clone is ion-exchange column purified and shipped in a 2D barcoded Matrix tube containing 10ug of transfection-ready, dried plasmid DNA (reconstitute with 100 ul of water).

Reconstitution Method:

1. Centrifuge at 5,000xg for 5min.
2. Carefully open the tube and add 100ul of sterile water to dissolve the DNA.
3. Close the tube and incubate for 10 minutes at room temperature.
4. Briefly vortex the tube and then do a quick spin (less than 5000xg) to concentrate the liquid at the bottom.
5. Store the suspended plasmid at -20°C. The DNA is stable for at least one year from date of shipping when stored at -20°C.

Note: Plasmids are not sterile. For experiments where strict sterility is required, filtration with 0.22um filter is required.

RefSeq: [NM_198519.1](#), [NP_940921.1](#)

RefSeq Size: 2145 bp

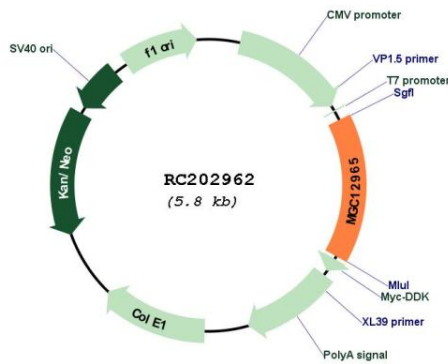
RefSeq ORF: 896 bp

Locus ID: 374408

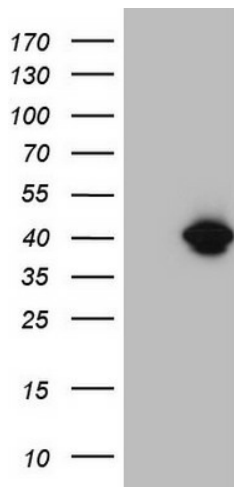
Cytogenetics: 11q13.4

MW: 34.3 kDa

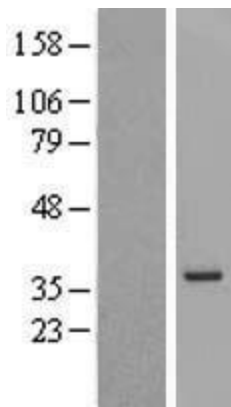
Product images:



Circular map for RC202962



HEK293T cells were transfected with the pCMV6-ENTRY control (Cat# [PS100001], Left lane) or pCMV6-ENTRY MGC12965 (Cat# RC202962, Right lane) cDNA for 48 hrs and lysed. Equivalent amounts of cell lysates (5 ug per lane) were separated by SDS-PAGE and immunoblotted with anti-MGC12965 (Cat# [TA808261])(1:2000). Positive lysates [LY404904] (100ug) and [LC404904] (20ug) can be purchased separately from OriGene.



Western blot validation of overexpression lysate (Cat# [LY404904]) using anti-DDK antibody (Cat# [TA50011-100]). Left: Cell lysates from untransfected HEK293T cells; Right: Cell lysates from HEK293T cells transfected with RC202962 using transfection reagent MegaTran 2.0 (Cat# [TT210002]).