

Product datasheet for **RC202954**

Clathrin light chain (CLTB) (NM_001834) Human Tagged ORF Clone

Product data:

Product Type:	Expression Plasmids
Product Name:	Clathrin light chain (CLTB) (NM_001834) Human Tagged ORF Clone
Tag:	Myc-DDK
Symbol:	Clathrin light chain
Synonyms:	LCB
Mammalian Cell Selection:	Neomycin
Vector:	pCMV6-Entry (PS100001)
E. coli Selection:	Kanamycin (25 ug/mL)
ORF Nucleotide Sequence:	>RC202954 ORF sequence Red=Cloning site Blue=ORF Green=Tags(s)

TTTTGTAATACGACTCACTATAGGGCGGCCGGAATTCGTCGACTGGATCCGGTACCGAGGAGATCTGCC
GCC**CGATCGCC**

ATGGCTGATGACTTTGGCTTCTTCTCGTCGTCGGAGAGCGGTGCCCGGAGGCGGCGGAGGAGGACCCGG
CGGCCGCCTTCTGGCCAGCAGGAGAGCGAGATTGCAGGCATAGAGAACGACGAGGGCTTCGGGGCACC
TGCCGGCAGCCATGCGGCCCGCGCAGCCGGGCCACGAGTGGGGCTGGTTCTGAGGACATGGGGACC
ACAGTCAATGGAGATGTGTTTCAGGAGGCCAACGGTCTGCTGATGGCTACGCAGCCATTGCCAGGCTG
ACAGGCTGACCCAGGAGCCTGAGAGCATCCGCAAGTGGCGAGAGGAGCAGAGGAAACGGTGCAGAGCT
GGATGCTGCATCTAAGGTCACGGAACAGGAATGGCGGGAGAAGGCCAAGAAGGACCTGGAGGAGTGGAA
CAGCGCCAGAGTGAACAAGTAGAGAAGAACAAGATCAACAACCGGGCATCCGAGGAGGCTTTCGTGAAGG
AATCCAAGGAGGAGACCCAGGCACAGAGTGGGAGAAGGTGGCCAGCTATGTGACTTCAACCCCAAGAG
CAGCAAGCAGTGCAAAGATGTGTCCCGCTGCGCTCGGTGCTCATGTCCCTGAAGCAGACGCCACTGTCC
CGC

ACGCGTACGCGGCCGCTCGAGCAGAACTCATCTCAGAAGAGGATCTGGCAGCAAATGATATCCTGGATT
ACAAGGATGACGACGATAAGGTTTAA



[View online »](#)

Protein Sequence: >RC202954 protein sequence
Red=Cloning site Green=Tags(s)

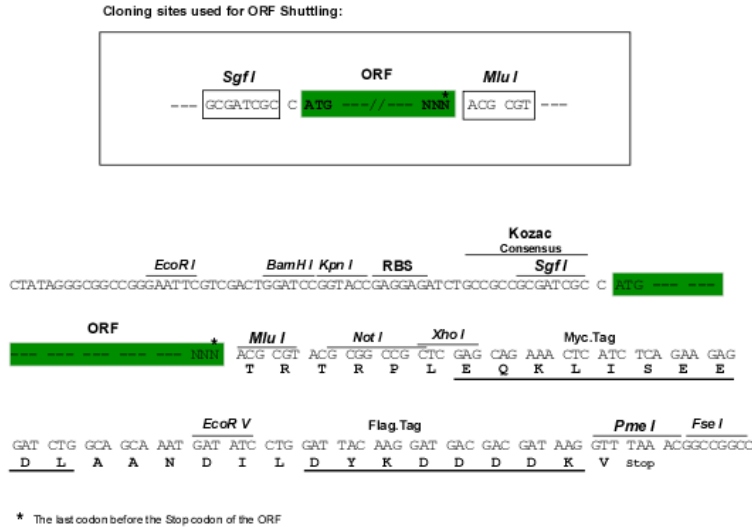
MADDFGFFSSSESGAPEAAEEDPAAAFLAQESEIAGIENDEGFGAPAGSHAAPAQPGPTSGAGSEDMGT
 TVNGDVFQEANGPADGYAAIAQADRLTQEPESIRKWREEQRKRLQELDAASKVTEQEWREKAKDLEEWN
 QRQSEQVEKNKINNRASEEFVKESKEETPGTEWEKVAQLCDFNPKSSKQCKDVSRLRSVLSLKTPLS
 R

TRTRPLEQKLISEEDLAANDILDYKDDDDKV

Chromatograms: https://cdn.origene.com/chromatograms/mk6076_a04.zip

Restriction Sites: SgfI-MluI

Cloning Scheme:



ACCN: NM_001834

ORF Size: 633 bp

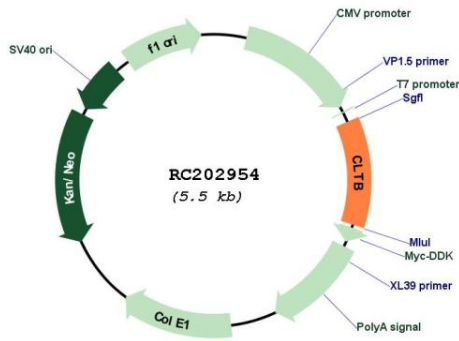
OTI Disclaimer: The molecular sequence of this clone aligns with the gene accession number as a point of reference only. However, individual transcript sequences of the same gene can differ through naturally occurring variations (e.g. polymorphisms), each with its own valid existence. This clone is substantially in agreement with the reference, but a complete review of all prevailing variants is recommended prior to use. [More info](#)

OTI Annotation: This clone was engineered to express the complete ORF with an expression tag. Expression varies depending on the nature of the gene.

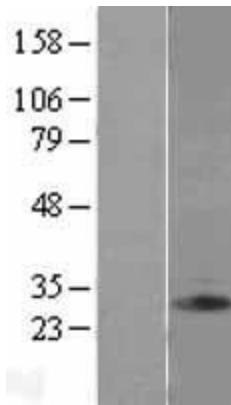
Components: The ORF clone is ion-exchange column purified and shipped in a 2D barcoded Matrix tube containing 10ug of transfection-ready, dried plasmid DNA (reconstitute with 100 ul of water).

Reconstitution Method:	<ol style="list-style-type: none">1. Centrifuge at 5,000xg for 5min.2. Carefully open the tube and add 100ul of sterile water to dissolve the DNA.3. Close the tube and incubate for 10 minutes at room temperature.4. Briefly vortex the tube and then do a quick spin (less than 5000xg) to concentrate the liquid at the bottom.5. Store the suspended plasmid at -20°C. The DNA is stable for at least one year from date of shipping when stored at -20°C.
Note:	Plasmids are not sterile. For experiments where strict sterility is required, filtration with 0.22um filter is required.
RefSeq:	NM_001834.5
RefSeq Size:	1226 bp
RefSeq ORF:	636 bp
Locus ID:	1212
UniProt ID:	P09497
Cytogenetics:	5q35.2
Domains:	Clathrin_lg_ch
Protein Pathways:	Endocytosis, Huntington's disease, Lysosome
MW:	23.2 kDa
Gene Summary:	Clathrin is a large, soluble protein composed of heavy and light chains. It functions as the main structural component of the lattice-type cytoplasmic face of coated pits and vesicles which entrap specific macromolecules during receptor-mediated endocytosis. This gene encodes one of two clathrin light chain proteins which are believed to function as regulatory elements. Alternative splicing results in multiple transcript variants. [provided by RefSeq, Jul 2008]

Product images:



Circular map for RC202954



Western blot validation of overexpression lysate (Cat# [LY400697]) using anti-DDK antibody (Cat# [TA50011-100]). Left: Cell lysates from untransfected HEK293T cells; Right: Cell lysates from HEK293T cells transfected with RC202954 using transfection reagent MegaTran 2.0 (Cat# [TT210002]).