

Product datasheet for RC202949

AICDA (NM_020661) Human Tagged ORF Clone

Product data:

Product Type: Expression Plasmids
Product Name: AICDA (NM_020661) Human Tagged ORF Clone
Tag: Myc-DDK
Symbol: AICDA
Synonyms: AID; ARP2; CDA2; HEL-S-284; HIGM2
Vector: pCMV6-Entry (PS100001)
E. coli Selection: Kanamycin (25 ug/mL)
Cell Selection: Neomycin
ORF Nucleotide Sequence: >RC202949 ORF sequence
Red=Cloning site Blue=ORF Green=Tags(s)

TTTTGTAATACGACTCACTATAGGGCGCCGGAATTCGTCGACTGGATCCGGTACCGAGGAGATCTGCC
GCC**CGATCGCC**

ATGGACAGCCTTTGATGAACCGGAGGAAGTTTCTTTACCAATTCAAAAATGTCCGCTGGGCTAAGGGTC
GGCGTGAGACCTACCTGTGCTACGTAGTGAAGAGGCGTGACAGTGCTACATCCTTTTCACTGGACTTTGG
TTATCTTCGCAATAAGAACGGCTGCCACGTGGAATTGCTCTTCCCTCCGCTACATCTCGGACTGGGACCTA
GACCCTGGCCGCTGCTACCGCGTCACCTGGTTACCTCCTGGAGCCCCTGCTACGACTGTGCCCGACATG
TGGCCGACTTTTCTGCGAGGGAACCCCAACCTCAGTCTGAGGATCTTACCAGCGCGCTCTACTTCTGTGA
GGACCGCAAGGCTGAGCCCGAGGGGCTGCGCGGCTGCACCGCGCCGGGTGCAAATAGCCATCATGACC
TTCAAAGATTATTTTACTGTGGAATACTTTGTAGAAAACCATGAAAGAACTTTCAAAGCCTGGGAAG
GGCTGCATGAAAATTCAGTTCTGCTCTCCAGACAGCTTCGGCGCATCCTTTTGCCCTGTATGAGGTTGA
TGACTTACGAGACGCATTTCTGACTTTGGGACTT

ACGCGTACGCGGCCGCTCGAGCAGAACTCATCTCAGAAGAGGATCTGGCAGCAAATGATATCCTGGATT
ACAAGGATGACGACGATAAGGTTTAA

Protein Sequence: >RC202949 protein sequence
Red=Cloning site Green=Tags(s)

MDSLMLNRRKFLYQFKNVRWAKGRRETYLCYVVKRRDSATSFSLDFGYLRNKNKGCHVELLFLRYISDWDL
DPGRCYRVTWFTSWSPCYDCARHVADFLRGNPNLSLRIFTARLYFCEDRKAEPGLRRLHRAGVQIAIMT
FKDYFYCWNTFVENHERTFKAWEGLHENSVRLSRQLRILLPLYEVDDLRFRTLGL

TRTRPLEQKLISEEDLAANDILDYKDDDDKV

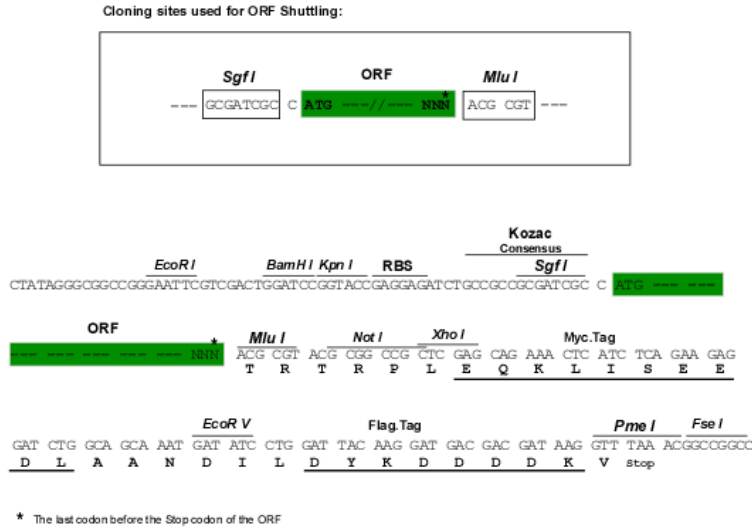
Chromatograms: https://cdn.origene.com/chromatograms/mk6076_g12.zip



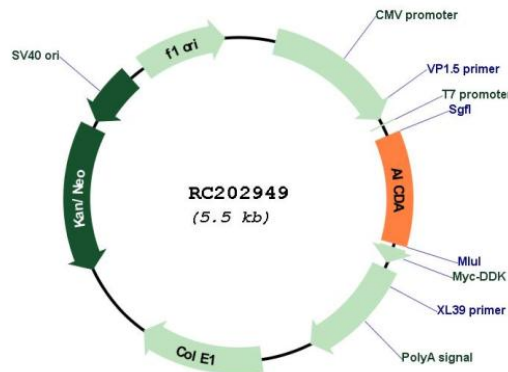
[View online »](#)

Restriction Sites: SgfI-MluI

Cloning Scheme:



Plasmid Map:



ACCN: NM_020661

ORF Size: 594 bp

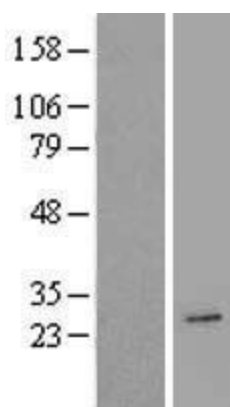
OTI Disclaimer: The molecular sequence of this clone aligns with the gene accession number as a point of reference only. However, individual transcript sequences of the same gene can differ through naturally occurring variations (e.g. polymorphisms), each with its own valid existence. This clone is substantially in agreement with the reference, but a complete review of all prevailing variants is recommended prior to use. [More info](#)

OTI Annotation: This clone was engineered to express the complete ORF with an expression tag. Expression varies depending on the nature of the gene.

RefSeq: [NM_020661.1](#), [NP_065712.1](#)

RefSeq Size:	2794 bp
RefSeq ORF:	597 bp
Locus ID:	57379
Protein Families:	Druggable Genome
Protein Pathways:	Primary immunodeficiency
MW:	24 kDa
Gene Summary:	This gene encodes a RNA-editing deaminase that is a member of the cytidine deaminase family. The protein is involved in somatic hypermutation, gene conversion, and class-switch recombination of immunoglobulin genes. Defects in this gene are the cause of autosomal recessive hyper-IgM immunodeficiency syndrome type 2 (HIGM2). [provided by RefSeq, Feb 2009]

Product images:



Western blot validation of overexpression lysate (Cat# [LY412399]) using anti-DDK antibody (Cat# [TA50011-100]). Left: Cell lysates from untransfected HEK293T cells; Right: Cell lysates from HEK293T cells transfected with RC202949 using transfection reagent MegaTran 2.0 (Cat# [TT210002]).