

Product datasheet for RC202948

TACO1 (NM_016360) Human Tagged ORF Clone

Product data:

Product Type:	Expression Plasmids
Product Name:	TACO1 (NM_016360) Human Tagged ORF Clone
Tag:	Myc-DDK
Symbol:	TACO1
Synonyms:	CCDC44; MC4DN8
Mammalian Cell Selection:	Neomycin
Vector:	pCMV6-Entry (PS100001)
E. coli Selection:	Kanamycin (25 ug/mL)
ORF Nucleotide Sequence:	>RC202948 ORF sequence Red=Cloning site Blue=ORF Green=Tags(s)

TTTTGTAATACGACTCACTATAGGGCGGCCGGAATTCGTCGACTGGATCCGGTACCGAGGAGATCTGCC
GCC**CGATCGCC**

ATGTCGGCTTGGGCTGCTGCCAGCCTAAGCAGGGCCGCTGCCGATGCTTGCTGGCACGAGGCCCGGGG
TCAGGGCGGCTCCTCCGCGGACCCCGGCCCTCCACCCCGAGCCCGGGGCTGCGGTGCCGCTCCGGG
CAGGACGCTGCACTTTACCGGGTGTCCCGCCGGGCACAACAAGTGGTCCAAAGTCAGGCACATCAAG
GGTCCGAAGGACGTCGAAAGGAGTCGCATCTTCTCCAAACTCTGTTTGAACATCCGCCTGGCAGTAAAG
AAGGAGGCCCAACCCTGAGCACAACAGCAACCTGGCCAATATCTTAGAGGTGTGTCGCAGCAAACATAT
GCCCAAGTCAACGATTGAGACAGCACTGAAAATGGAGAAATCCAAGGACACTTATTTGCTGTATGAGGGT
CGAGGCCCTGGTGGCTCTTCTCTGCTCATCGAGGCATTATCTAACAGTAGCCACAAGTGCCAAGCAGACA
TTAGACATATCCTGAATAAGAAATGGAGGAGTGATGGCTGTAGGAGCTCGTCACTCTTTTGACAAAAGGG
GGTGTATTGTGGTTGAAGTGGAGGACAGAGAGAAGAAGGCTGTGAACCTAGAGCGTGCCCTGGAGATGGCA
ATCGAAGCAGGAGCTGAGGATGTCAAGGAACTGAAGATGAAGAAGAAAGAACGTTTTTAAATTTATTT
GTGATGCCTTCTCACTGCACCAAGTGAGGAAGAAGCTGGACTCCCTGGGCTGTGTTCTGTGTCTGTGC
ACTAGAGTTTATCCCAACTCAAAGGTGCAGCTGGCTGAGCCCGACCTGGAACAGGCCGCACATCTCATT
CAGGCTCTCAGCAACCACGAGGATGTGATTCACGTCATGATAACATTGAA

ACGCGTACGCGGGCCGCTCGAGCAGAAACTCATCTCAGAAGAGGATCTGGCAGCAAATGATATCCTGGATT
ACAAGGATGACGACGATAAGGTTTAA



[View online »](#)

Protein Sequence: >RC202948 protein sequence
Red=Cloning site Green=Tags(s)

MSAWAAASLSRAAARCLLARGPGVRAAPRDRPSPHPEPRGCGAAPGRTLHFTAAPVAGHNKWSKVRHIK
 GPKDVERSRIFSKLCLNIRLAVKEGGPNPEHNSNLANILEVCRSKHMPKSTIETALKMEKSKDTYLLYEG
 RGPGGSSLLIEALSNSSHKQADIRHILNKNGGVMVAVGARHSFDKKGVI VVEVEDREKKAVNLERALEMA
 IEAGAEDVKETEDEEERNVFKFICDASSLHQVRKKLDSLGLCSVSCALEFIPNSKVQLAEPDLEQAAHLI
 QALSNHEDVIHVYDNIE

TRTRPLEQKLISEEDLAANDILDYKDDDDKV

Chromatograms: https://cdn.origene.com/chromatograms/mk6145_d02.zip

Restriction Sites: SgfI-MluI

Cloning Scheme:



ACCN: NM_016360

ORF Size: 891 bp

OTI Disclaimer: The molecular sequence of this clone aligns with the gene accession number as a point of reference only. However, individual transcript sequences of the same gene can differ through naturally occurring variations (e.g. polymorphisms), each with its own valid existence. This clone is substantially in agreement with the reference, but a complete review of all prevailing variants is recommended prior to use. [More info](#)

OTI Annotation: This clone was engineered to express the complete ORF with an expression tag. Expression varies depending on the nature of the gene.

Components: The ORF clone is ion-exchange column purified and shipped in a 2D barcoded Matrix tube containing 10ug of transfection-ready, dried plasmid DNA (reconstitute with 100 ul of water).

Reconstitution Method:

1. Centrifuge at 5,000xg for 5min.
2. Carefully open the tube and add 100ul of sterile water to dissolve the DNA.
3. Close the tube and incubate for 10 minutes at room temperature.
4. Briefly vortex the tube and then do a quick spin (less than 5000xg) to concentrate the liquid at the bottom.
5. Store the suspended plasmid at -20°C. The DNA is stable for at least one year from date of shipping when stored at -20°C.

Note: Plasmids are not sterile. For experiments where strict sterility is required, filtration with 0.22um filter is required.

RefSeq: [NM_016360.4](#)

RefSeq Size: 1479 bp

RefSeq ORF: 894 bp

Locus ID: 51204

UniProt ID: [Q9BSH4](#)

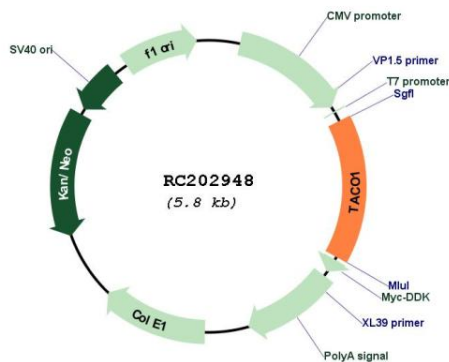
Cytogenetics: 17q23.3

Domains: DUF28

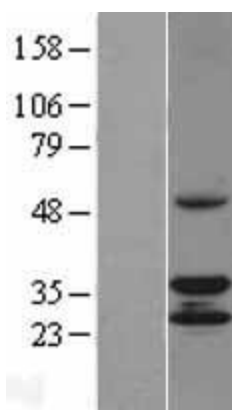
MW: 32.5 kDa

Gene Summary: This gene encodes a mitochondrial protein that function as a translational activator of mitochondrially-encoded cytochrome c oxidase 1. Mutations in this gene are associated with Leigh syndrome.[provided by RefSeq, Mar 2010]

Product images:



Circular map for RC202948



Western blot validation of overexpression lysate (Cat# [LY402545]) using anti-DDK antibody (Cat# [TA50011-100]). Left: Cell lysates from untransfected HEK293T cells; Right: Cell lysates from HEK293T cells transfected with RC202948 using transfection reagent MegaTran 2.0 (Cat# [TT210002]).



Coomassie blue staining of purified TACO1 protein (Cat# [TP302948]). The protein was produced from HEK293T cells transfected with TACO1 cDNA clone (Cat# RC202948) using MegaTran 2.0 (Cat# [TT210002]).