

Product datasheet for **RC202947**

RIOK1 (NM_153005) Human Tagged ORF Clone

Product data:

Product Type:	Expression Plasmids
Product Name:	RIOK1 (NM_153005) Human Tagged ORF Clone
Tag:	Myc-DDK
Symbol:	RIOK1
Synonyms:	AD034; bA288G3.1; RRP10
Mammalian Cell Selection:	Neomycin
Vector:	pCMV6-Entry (PS100001)
E. coli Selection:	Kanamycin (25 ug/mL)



[View online »](#)

ORF Nucleotide Sequence:

>RC202947 representing NM_153005
 Red=Cloning site Blue=ORF Green=Tags(s)

TTTTGTAATACGACTCACTATAGGGCGGCCGGGAATTCGTCGACTGGATCCGGTACCGAGGAGATCTGCC
 GCC**CGCATCGCC**

ATGGACTACCGCGGCTTCTCATGAGCCGGTGGTCCCCGGCAATTCGACGACGCGGACTCCTCTGACA
 GTGAAAACAGAGACTTGAAGACAGTCAAAGAGAAGGATGACATTCTGTTTGAAGACCTTCAAGACAATGT
 GAATGAGAATGGTGAAGGTGAAATAGAAGATGAGGAGGAGGGTTATGATGATGATGATGATGACTGG
 GACTGGGATGAAGGAGTTGAAAACCGCCAAGGGTTATGCTGGAATGGAGGAAGCAACCCACAGGCAA
 ATCGACAGACCTCCGACAGCAGTTCAGCCAAAATGTCTACTCCAGCAGACAAGGTCTTACGGAAATTTGA
 GAATAAAATTAATTTAGATAAGCTAAATGTTACTGATTCCGTCATAAATAAAGTCACCGAAAAGTCTAGA
 CAAAAGGAAGCAGATATGTATCGCATCAAAGATAAGGCAGACAGCAACTGTAGAACAGGTGTTGGATC
 CCAGAACAAGAATGATTTTATTCAGATGTTGACTAGAGGAATCATAACAGAGATAAATGGCTGCATTAG
 CACAGGAAAAGAAGCTAATGTATACCATGCTAGCAGCAAAATGGAGAGAGCAGCAATCAAAATTTAT
 AAAACTTCTATTTTGGTGTCAAAGATCGGGATAAATATGTAAGTGGAGAATTCAGATTTTCGTCATGGCT
 ATTGTAAGGAAACCCTAGGAAAATGGTAAAACCTGGGCAGAAAAGAAATGAGGAACTTAATCAGGCT
 AAACACAGCAGAGATACCATGTCCAGAACCAATAATGCTAAGAAGTCATGTTCTTGTGATGAGTTTCATC
 GGTAAGATGACATGCCTGCACCACTCTTGAAAATGTCCAGTTATCAGAATCCAAGGCTCGGGAGTTGT
 ACCTGCAGGTCATTACGTACATGAGAAGAATGTATCAGGATGCCAGACTTGCCATGCAGATCTCAGTGA
 ATTTAACATGCTGTACCACGGTGGAGGCGGTATATCATTGACGTGTCTCAGTCCGTGGAGCAGACCAC
 CCACATGCCTTGGAGTTCTTGAAAAGGATTGCCCAACGTCAATGATTTCTTTATGAGGCACAGTGTG
 CTGTCATGACTGTGCGGGAGCTTTTGAATTTGTCACAGATCCATTACACATGAGAACATGGATGC
 TTATCTCTCAAAGGCCATGGAAATAGCATCTCAAAGGACCAAGGAAGAACGGTCTAGCCAAGATCATGTG
 GATGAAGAGGTGTTAAGCGAGCATATATTCCTAGAACCCTGAATGAAGTAAAAAATTATGAGAGGGATA
 TGGACATAAATTATGAAATTGAAGGAAGAGGACATGGCCATGAATGCCAACAAGATAATATTCTATACCA
 GACTGTTACAGGATTGAAGAAAGATTTGTGAGGAGTTCAGAAGGTCCTGCACTCCTAGAAAATCAAGTG
 GAGGAAAGGACTTGTCTGATTGAGAAGATATTGGAAGCTCTGAGTGCTCTGACACAGACTCTGAAGAGC
 AGGGAGACCATGCCCGCCCAAGAAACACACCACGACCCTGACATTGATAAAAAAGAAAGAAAAAGAT
 GGTC AAGGAAGCCAGAGAGAGAAAAGAAAAAACAAAATTCCTAACATGTGAAAAAAGAAAGGAGAAG
 ACAGCCAAGACGAAAAAAGGCAAA

ACGCGTACGCGGCCGCTCGAGCAGAAACTCATCTCAGAAGAGGATCTGGCAGCAAATGATATCCTGGATT
 ACAAGGATGACGACGATAAGGTTTAA

Protein Sequence:

>RC202947 representing NM_153005
 Red=Cloning site Green=Tags(s)

MDYRLLMSRVVPGQFDDADSSDENRDLKTVKEKDDILFEDLQDNVNGEGEIEDEEEEGYDDDDDDW
 DWDEGVGKLAKGYVWNGSNPQANRQTSDDSSAKMSTPADKVLRFENKINLDKLNVTDSVINKVTEKSR
 QKEADMYRIKDKADRATVEQVLDPRTRMILFKMLTRGIIITEINGCISTGKEANVYHASTANGESRAIKIY
 KTSILVFKDRDKYVSGEFRFRHGYCKGNPRKMVKTWAEEKEMRNLIRLNTAEIPCEPIMLRSHVLVMSFI
 GKDDMPAPLLKNVQLSESKARELYLQVIQYMRMYQDARLVHADLSEFNMLYHGGVYIIDVSQSVEHHDH
 PHALEFLRKDCANVNDFFMRHSAVMTVRELFEFVTDPSITHENMDAYLSKAMEIASQRTKEERSSQDHV
 DEEVFKRAYIPRTLNEVKNYERMDIIMKLKEEDMAMNAQQDNILYQTVTGLKKDLSGVQKVPALLENQV
 EERTCSDSEDIGSSECSDTDSEEQGDHARPKHTTDPDIDKKERKKMVKEAQREKRKNKIPKHVKKRKEK
 TAKTKKGG

TRTRPLEQKLISEEDLAANDILDYKDDDDKV

Restriction Sites:

SgfI-MluI

Cloning Scheme:


ACCN: NM_153005

ORF Size: 1704 bp

OTI Disclaimer: The molecular sequence of this clone aligns with the gene accession number as a point of reference only. However, individual transcript sequences of the same gene can differ through naturally occurring variations (e.g. polymorphisms), each with its own valid existence. This clone is substantially in agreement with the reference, but a complete review of all prevailing variants is recommended prior to use. [More info](#)

OTI Annotation: This clone was engineered to express the complete ORF with an expression tag. Expression varies depending on the nature of the gene.

Components: The ORF clone is ion-exchange column purified and shipped in a 2D barcoded Matrix tube containing 10ug of transfection-ready, dried plasmid DNA (reconstitute with 100 ul of water).

Reconstitution Method:

1. Centrifuge at 5,000xg for 5min.
2. Carefully open the tube and add 100ul of sterile water to dissolve the DNA.
3. Close the tube and incubate for 10 minutes at room temperature.
4. Briefly vortex the tube and then do a quick spin (less than 5000xg) to concentrate the liquid at the bottom.
5. Store the suspended plasmid at -20°C. The DNA is stable for at least one year from date of shipping when stored at -20°C.

Note: Plasmids are not sterile. For experiments where strict sterility is required, filtration with 0.22um filter is required.

RefSeq: [NM_153005.1](#), [NP_694550.1](#)

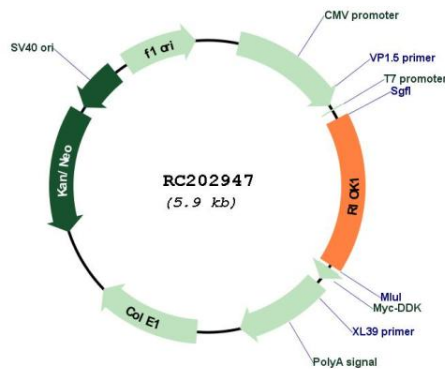
RefSeq Size: 1796 bp

RefSeq ORF: 984 bp

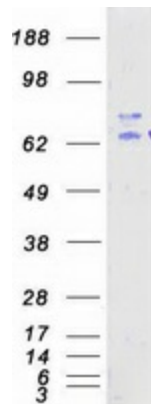
Locus ID: 83732

Cytogenetics:	6p24.3
Domains:	RIO
Protein Families:	Druggable Genome, Protein Kinase
MW:	65.6 kDa
Gene Summary:	The protein encoded by this gene competes with pICln for inclusion in the protein arginine methyltransferase 5 complex. This complex targets substrates for dimethylation. The encoded protein is essential for the last steps in the maturation of 40S subunits. [provided by RefSeq, Jan 2017]

Product images:



Circular map for RC202947



Coomassie blue staining of purified RIOK1 protein (Cat# [TP302947]). The protein was produced from HEK293T cells transfected with RIOK1 cDNA clone (Cat# RC202947) using MegaTran 2.0 (Cat# [TT210002]).