

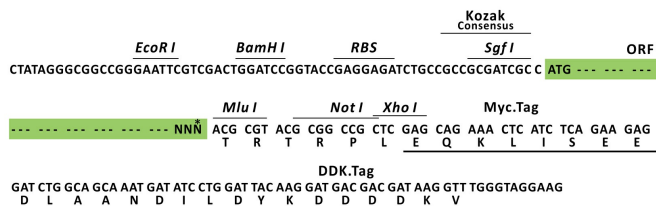
## Product datasheet for RC202946L3

### GORASP2 (NM\_015530) Human Tagged Lenti ORF Clone

#### Product data:

Product Type:	Expression Plasmids
Product Name:	GORASP2 (NM_015530) Human Tagged Lenti ORF Clone
Tag:	Myc-DDK
Symbol:	GORASP2
Synonyms:	GOLPH6; GRASP55; GRS2; p59
Mammalian Cell Selection:	Puromycin
Vector:	pLenti-C-Myc-DDK-P2A-Puro (PS100092)
E. coli Selection:	Chloramphenicol (34 ug/mL)
ORF Nucleotide Sequence:	The ORF insert of this clone is exactly the same as(RC202946).
Restriction Sites:	SgfI-MluI
Cloning Scheme:	

Cloning sites used for ORF Shuttling:



\* The last codon before the Stop codon of the ORF.

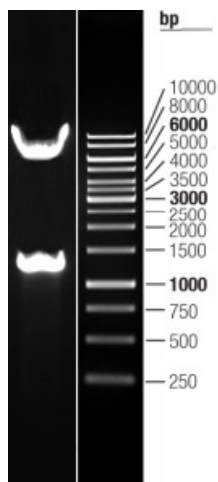
ACCN:	NM_015530
ORF Size:	1356 bp



[View online »](#)

<b>OTI Disclaimer:</b>	The molecular sequence of this clone aligns with the gene accession number as a point of reference only. However, individual transcript sequences of the same gene can differ through naturally occurring variations (e.g. polymorphisms), each with its own valid existence. This clone is substantially in agreement with the reference, but a complete review of all prevailing variants is recommended prior to use. <a href="#">More info</a>
<b>OTI Annotation:</b>	This clone was engineered to express the complete ORF with an expression tag. Expression varies depending on the nature of the gene.
<b>Components:</b>	The ORF clone is ion-exchange column purified and shipped in a 2D barcoded Matrix tube containing 10ug of transfection-ready, dried plasmid DNA (reconstitute with 100 ul of water).
<b>Reconstitution Method:</b>	<ol style="list-style-type: none"><li>1. Centrifuge at 5,000xg for 5min.</li><li>2. Carefully open the tube and add 100ul of sterile water to dissolve the DNA.</li><li>3. Close the tube and incubate for 10 minutes at room temperature.</li><li>4. Briefly vortex the tube and then do a quick spin (less than 5000xg) to concentrate the liquid at the bottom.</li><li>5. Store the suspended plasmid at -20°C. The DNA is stable for at least one year from date of shipping when stored at -20°C.</li></ol>
<b>RefSeq:</b>	<a href="#">NM_015530.3</a> , <a href="#">NP_056345.3</a>
<b>RefSeq Size:</b>	3191 bp
<b>RefSeq ORF:</b>	1359 bp
<b>Locus ID:</b>	26003
<b>UniProt ID:</b>	<a href="#">Q9H8Y8</a>
<b>Cytogenetics:</b>	2q31.1
<b>Domains:</b>	GRASP55_65
<b>Protein Families:</b>	Druggable Genome
<b>MW:</b>	47.1 kDa
<b>Gene Summary:</b>	This gene encodes a member of the Golgi reassembly stacking protein family. These proteins may play a role in the stacking of Golgi cisternae and Golgi ribbon formation, as well as Golgi fragmentation during apoptosis or mitosis. The encoded protein also plays a role in the intracellular transport of transforming growth factor alpha and may function as a molecular chaperone. A pseudogene of this gene is located on the short arm of chromosome 2. Alternatively spliced transcript variants encoding multiple isoforms have been observed for this gene. [provided by RefSeq, Jan 2011]

## Product images:



Double digestion of RC202946L3 using SgfI and MluI