

Product datasheet for **RC202946**

GORASP2 (NM_015530) Human Tagged ORF Clone

Product data:

Product Type:	Expression Plasmids
Product Name:	GORASP2 (NM_015530) Human Tagged ORF Clone
Tag:	Myc-DDK
Symbol:	GORASP2
Synonyms:	GOLPH6; GRASP55; GRS2; p59
Mammalian Cell Selection:	Neomycin
Vector:	pCMV6-Entry (PS100001)
E. coli Selection:	Kanamycin (25 ug/mL)



[View online »](#)

ORF Nucleotide Sequence:

>RC202946 ORF sequence
 Red=Cloning site Blue=ORF Green=Tags(s)

TTTTGTAATACGACTCACTATAGGGCGGCCGGGAATTCGTCGACTGGATCCGGTACCGAGGAGATCTGCC
 GCC**CGGATCGCC**

ATGGGCTCCTCGCAAAGCGTCGAGATCCCGGGCGGGGCACCGAGGGCTACCACGTTCTGCGGGTACAAG
 AAAATTCGCCAGGACACAGAGCTGGTTTGGAGCCTTTCTTTGATTTTATTGTTTCTATTAATGGTTCAAG
 ATTAATAAAGACAATGACACTCTTAAGGATCTGCTGAAAGCAAACGTTGAAAAGCCTGTAAGATGCTT
 ATCTATAGCAGCAAAACATTGGAAGTGCAGAGACCTCAGTCACACCAAGTAACCTGTGGGGCGCCAGG
 GCTTATTGGGAGTGAGCATTCTGTTTCTGCAGCTTTGATGGGGCAAATGAAAATGTTTGGCATGTCTGGA
 GGTGGAATCAAATTCCTGCAGCACTGGCAGGTCTTAGACCACACAGTGATTATATAATTGGAGCAGAT
 ACAGTCATGAATGAGTCTGAAGATCTATTCAGCCTTATCGAAACACATGAAGCAAACCATTGAACTGT
 ATGTGTACAACACAGACTGATAACTGTGCGAAGTATTATTACACCAAAATTCGCATGGGGTGGAGA
 AGGCAGCCTAGGATGTGGCATTGGATATGGTTATTTGCATCGAATACCTACACGCCCATTTGAGGAAGGA
 AAGAAAATTTCTCTCCAGGACAAATGGCTGGTACACCTATTACACCTCTTAAAGATGGGTTTACAGAGG
 TCCAGCTGTCTCAGTTAATCCCCCGTCTTTGTACCACCAGGAACCTACAGGAATTGAACAGAGTCTGAC
 TGGACTTTCTATTAGCTCAACTCCACCAGCTGTCAAGTGTCTCAGTACAGGTGTACCAACAGTACCG
 TTATTGCCACCACAAGTAAACCAGTCCCTCACTTCTGTGCCACCAATGAATCCAGCTACTACATTACCAG
 GTCTGTAGCCTTTACCAGCAGGACTGCCAACCTCCCCAACCTCAACCTCAACCTCCCAGCACCACAT
 CATGCCAGGGTGGCTTACCAGAACTTGTAACCAGGTCTGCCACCTCTTCTTCCATGCCTCCCCGA
 AACTTACTGGCATTGCACCTCTCCCCTGCCATCCGAGTTCCTCCCGTCATTCCCCTGGTTCCAGAGA
 GCTCTTCTGCAGCAAGCTCAGGAGAGCTGCTGTCTTCCCTCCCGCCACCAGCAACGCACCTCTGACCC
 TGCCACAACACTGCAAAGGCAGACGCTGCCTCCTCACTCACTGTGGATGTGACGCCCCCACTGCCAAG
 GCCCCACCACCGTTGAGGACAGAGTCGGCGACTCCACCCAGTCAGCGAGAAGCCTGTTTCTGCGGCTG
 TGGATGCCAATGCTTCTGAGTACCT

ACGCGTACGCGGCCGCTCGAGCAGAACTCATCTCAGAAGAGGATCTGGCAGCAAATGATATCCTGGATT
 ACAAGGATGACGACGATAAGGTTTAA

Protein Sequence:

>RC202946 protein sequence
 Red=Cloning site Green=Tags(s)

MGSSQSVEIPGGGTEGYHVLRVQENSPGHRAGLEPFFDFIVSINGSRLNKDNDTLKDLLKANVEKPKV
 IYSSKTLELRETSVTPSNLWGGQGLLGVSIKFCDFGANENVVHVEVESNSPAALAGLRPHSDYIIGAD
 TVMNESEDLFSLIETHEAKPLKLYVYNTDNDNCREVIIIPNSAWGEGSLGCGIGYLRHRIPTPFEEG
 KKIISLPGQMAGTPIITPLKDFTEVQLSSVNPPSLSPPGTTGIEQSLTGLSISSTPPAVSSVLSTGVPTVP
 LLPPQVQSLTSVPPMNPATTLPLMPLPAGLPNLPNLPNLPAPHIMPVGLPELVNPLPLPSPMP
 NLPPIAPLPLPSEFLPSFPLVPESSSAASSGELLSSLPPTSNAPSDPATTAKADAASSLTVDVTPPTAK
 APTTVEDRVGDSTPVSEKPVSAAVDANASESP

TRTRPLEQKLISEEDLAANDILDYKDDDDKV

Chromatograms:

https://cdn.origene.com/chromatograms/mk6152_f07.zip

Restriction Sites:

Sgfl-MluI

Cloning Scheme:


ACCN: NM_015530

ORF Size: 1356 bp

OTI Disclaimer: The molecular sequence of this clone aligns with the gene accession number as a point of reference only. However, individual transcript sequences of the same gene can differ through naturally occurring variations (e.g. polymorphisms), each with its own valid existence. This clone is substantially in agreement with the reference, but a complete review of all prevailing variants is recommended prior to use. [More info](#)

OTI Annotation: This clone was engineered to express the complete ORF with an expression tag. Expression varies depending on the nature of the gene.

Components: The ORF clone is ion-exchange column purified and shipped in a 2D barcoded Matrix tube containing 10ug of transfection-ready, dried plasmid DNA (reconstitute with 100 ul of water).

Reconstitution Method:

1. Centrifuge at 5,000xg for 5min.
2. Carefully open the tube and add 100ul of sterile water to dissolve the DNA.
3. Close the tube and incubate for 10 minutes at room temperature.
4. Briefly vortex the tube and then do a quick spin (less than 5000xg) to concentrate the liquid at the bottom.
5. Store the suspended plasmid at -20°C. The DNA is stable for at least one year from date of shipping when stored at -20°C.

Note: Plasmids are not sterile. For experiments where strict sterility is required, filtration with 0.22um filter is required.

RefSeq: [NM_015530.3](#), [NP_056345.3](#)

RefSeq Size: 3191 bp

RefSeq ORF: 1359 bp

Locus ID: 26003

UniProt ID: [Q9H8Y8](#)

Cytogenetics: 2q31.1

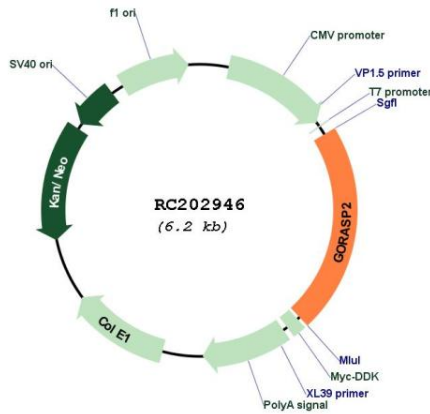
Domains: GRASP55_65

Protein Families: Druggable Genome

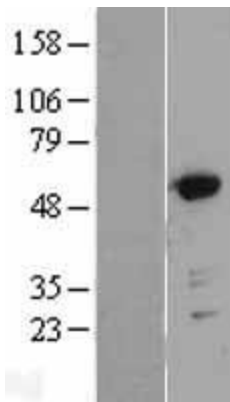
MW: 47.1 kDa

Gene Summary: This gene encodes a member of the Golgi reassembly stacking protein family. These proteins may play a role in the stacking of Golgi cisternae and Golgi ribbon formation, as well as Golgi fragmentation during apoptosis or mitosis. The encoded protein also plays a role in the intracellular transport of transforming growth factor alpha and may function as a molecular chaperone. A pseudogene of this gene is located on the short arm of chromosome 2. Alternatively spliced transcript variants encoding multiple isoforms have been observed for this gene. [provided by RefSeq, Jan 2011]

Product images:



Circular map for RC202946



Western blot validation of overexpression lysate (Cat# [LY402446]) using anti-DDK antibody (Cat# [TA50011-100]). Left: Cell lysates from untransfected HEK293T cells; Right: Cell lysates from HEK293T cells transfected with RC202946 using transfection reagent MegaTran 2.0 (Cat# [TT210002]).