

Product datasheet for RC202941

NRSN1 (NM_080723) Human Tagged ORF Clone

Product data:

Product Type: Expression Plasmids
Product Name: NRSN1 (NM_080723) Human Tagged ORF Clone
Tag: Myc-DDK
Symbol: NRSN1
Synonyms: p24; VMP
Mammalian Cell Selection: Neomycin
Vector: pCMV6-Entry (PS100001)
E. coli Selection: Kanamycin (25 ug/mL)
ORF Nucleotide Sequence: >RC202941 ORF sequence
 Red=Cloning site Blue=ORF Green=Tags(s)

TTTTGTAATACGACTCACTATAGGGCGCCGGGAATTCGTCGACTGGATCCGGTACCGAGGAGATCTGCC
 GCC**CGATCGCC**

ATGAGTCTTGCAGCAACGTCTGTGGTCCAGGCAGGCACAGGCTGCAGCTGAGGGTGGTTACCAGCGCT
 ATGGAGTCCGGTCTACCTGCACCAGTTTTATGAGGACTGTACAGCCTCAATTTGGGAGTATGAGGATGA
 TTTCCAGATCCAAAGATCACCTAACAGGTGGAGCTCAGTATTCTGGAAGTTGGACTCATCTCAGGTACA
 GTTTTTGTGATCCTCGGATTGACTGTTCTGGCAGTGGGCTTTCTGTGCCCCCAAATCGAAGCATTGT
 GCGAAGCCGATTTGTGGTGGTCGACACACATGCTGCCAGTTAACAGTCTCTGGACATGTACAAGCT
 GGCAGGAGCTGTTCTTCTGCATTGGAGGCACGTCCATGGCAGGGTGCCTGCTGATGTCGGTGTGGTA
 AAGAGCTACTCCAAAGAAGAAAATTCCTCCAGCAGAAGTTAAAGAACGAATCGCAGACATCAAAGCCC
 ACACCCAGCCGGTTACAAAAGCTCCAGGGCCAGGGGAAACAAAGATTCCAGTCACTTTGTCCAGGGTTCA
 AAATGTCCAGCCTCTACTGGCAACC

ACGCGTACGCGGCCGCTCGAGCAGAACTCATCTCAGAAGAGGATCTGGCAGCAATGATATCCTGGATT
 ACAAGGATGACGACGATAAGGTTTAA

Protein Sequence: >RC202941 protein sequence
 Red=Cloning site Green=Tags(s)

MSSCSNVCGSRQAQAAAEGGYQRYGVRSYLHQFYEDCTASWEYEDDFQIQRSPNRWSSVFWKVGILSGT
 VFVILGLTVLAVGFLVPPKIEAFGEADFVVVDTHAVQFNSALDMYKLAGAVLFCIGGTSMAGCLLMSVVF
 KYSKEEKFLQQKFKERIADIKAHTQPVTKAPGPGETKIPVTLSRVQNVQPLLAT

TRTRPLEQKLISEEDLAANDILDYKDDDDKV



[View online »](#)

Chromatograms: https://cdn.origene.com/chromatograms/mk6429_c11.zip

Restriction Sites: SgfI-MluI

Cloning Scheme:



ACCN: NM_080723

ORF Size: 585 bp

OTI Disclaimer: The molecular sequence of this clone aligns with the gene accession number as a point of reference only. However, individual transcript sequences of the same gene can differ through naturally occurring variations (e.g. polymorphisms), each with its own valid existence. This clone is substantially in agreement with the reference, but a complete review of all prevailing variants is recommended prior to use. [More info](#)

OTI Annotation: This clone was engineered to express the complete ORF with an expression tag. Expression varies depending on the nature of the gene.

Components: The ORF clone is ion-exchange column purified and shipped in a 2D barcoded Matrix tube containing 10ug of transfection-ready, dried plasmid DNA (reconstitute with 100 ul of water).

Reconstitution Method:

1. Centrifuge at 5,000xg for 5min.
2. Carefully open the tube and add 100ul of sterile water to dissolve the DNA.
3. Close the tube and incubate for 10 minutes at room temperature.
4. Briefly vortex the tube and then do a quick spin (less than 5000xg) to concentrate the liquid at the bottom.
5. Store the suspended plasmid at -20°C. The DNA is stable for at least one year from date of shipping when stored at -20°C.

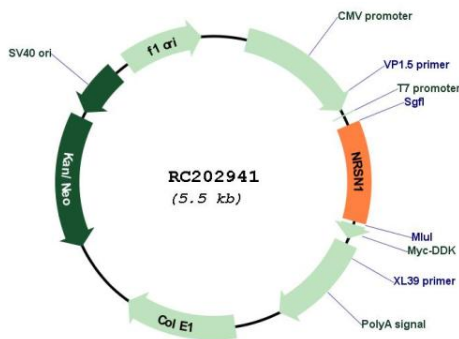
Note: Plasmids are not sterile. For experiments where strict sterility is required, filtration with 0.22um filter is required.

RefSeq: [NM_080723.5](#)

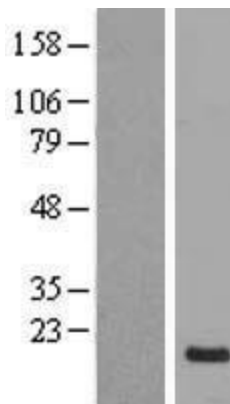
RefSeq Size: 2408 bp

RefSeq ORF: 588 bp
 Locus ID: 140767
 UniProt ID: [Q8IZ57](#)
 Cytogenetics: 6p22.3
 Protein Families: Transmembrane
 MW: 21.5 kDa
 Gene Summary: May play an important role in neural organelle transport, and in transduction of nerve signals or in nerve growth. May play a role in neurite extension. May play a role in memory consolidation (By similarity).[UniProtKB/Swiss-Prot Function]

Product images:



Circular map for RC202941



Western blot validation of overexpression lysate (Cat# [LY409044]) using anti-DDK antibody (Cat# [TA50011-100]). Left: Cell lysates from untransfected HEK293T cells; Right: Cell lysates from HEK293T cells transfected with RC202941 using transfection reagent MegaTran 2.0 (Cat# [TT210002]).