

Product datasheet for RC202939

HOXA10 (NM_018951) Human Tagged ORF Clone

Product data:

Product Type:	Expression Plasmids
Product Name:	HOXA10 (NM_018951) Human Tagged ORF Clone
Tag:	Myc-DDK
Symbol:	HOXA10
Synonyms:	HOX1; HOX1.8; HOX1H; PL
Mammalian Cell Selection:	Neomycin
Vector:	pCMV6-Entry (PS100001)
E. coli Selection:	Kanamycin (25 ug/mL)
ORF Nucleotide Sequence:	>RC202939 ORF sequence Red=Cloning site Blue=ORF Green=Tags(s)

TTTTGTAATACGACTCACTATAGGGCGGCCGGAATTCGTCGACTGGATCCGGTACCGAGGAGATCTGCC
GCC**CGATCGCC**

ATGTCATGCTCGGAGAGCCCCGCCGGAACCTTTTTGGTTCGACTCGCTCATCAGCTCGGGCAGAGGCG
AGGCAGGCGGGTGGTGGTGGCGGGGGGGCGGGCGGTGGCGTTACTACGCCACGGCGGGTCTA
CCTGCCCGCCGCCGACCTGCCCTACGGGTGCAGAGCTGCGGGCTTCCCCACGCTGGGCGGCAAG
CGCAATGAGGCAGCGTCGCCGGCAGCGGTGGCGGTGGCGGGGTCTAGGTCCCGGGCGCACGGCTACG
GGCCCTCGCCATAGACCTGTGGCTAGACGCGCCCGGTCTTCCCGGATGGAGCCGCTGACGGGCCGCC
GCCCGCGCCCAGCAGCAGCCGCCGCCCGCCGCAACCCAGCCAGCGCCGAGGCCACCTCGTGC
TCTTCGCGCAGAACATCAAAGAAGAGACTCCTACTGCCTCTACGACTCGGCGGACAAATGCCCAAAG
TCTCGGCCACCGCCGGAACCTGGCTCCCTTCCCGGGGGCCCGCCCGACGGCTGCGCCCTGGGCAC
CTCCAGCGGGGTGCCAGTGCCTGGCTACTTCCGCCTTCTCAGGCCTACGGCACCGCAAGGGCTATGGC
AGCGGGCGGGCGGGCGCGCAGCAACTCGGGGTGGCCCGTCCCCGCGCAGCCCCGGGGCGGGTTTCG
ATCTCCCGCCCGCTAGCCTCCGGTCCGGCGATGCGGCCCGGAAGGAGCGAGCCCTCGATTCCGCCGC
GCCCCCCACGCTGGCTTGCAGCGCGGGGGGCTCGCAGGGCGACGAGGAGCGCACCGCTCGTCTCG
GCCCGGAGGAGCTCCCCGGCCCTCCGAGAGCAGCAAAGCCTCGCCGGAAGAAGATTCCCTGGGCA
ATTCCAAAGGTGAAAACGACGCAACTGGCTCACGGCAAAGAGTGGTCGGAAGAAGCGCTGCCCTACAC
GAAGCACCAGACTGGAGCTGGAGAAGGAGTTTCTGTTCAATATGTACCTTACTCGAGAGCGGGCCTA
GAGATTAGCCGACGCTCCACCTCACGGACAGCAAGTAAAATCTGGTTTCAGAACCAGGATGAAAC
TGAAGAAAATGAATCGAGAAAACCGGATCCGGGAGCTCACAGCAACTTTAATTTTTCC

AG**CGGACCG**ACGCGTACGCGGCCGCTCGAGCAGAACTCATCTCAGAAGAGGATCTGGCAGCAAATGATATCC
TGGATTACAAGGATGACGACGATAAGGTTAA



[View online »](#)

Protein Sequence: >RC202939 protein sequence
Red=Cloning site Green=Tags(s)

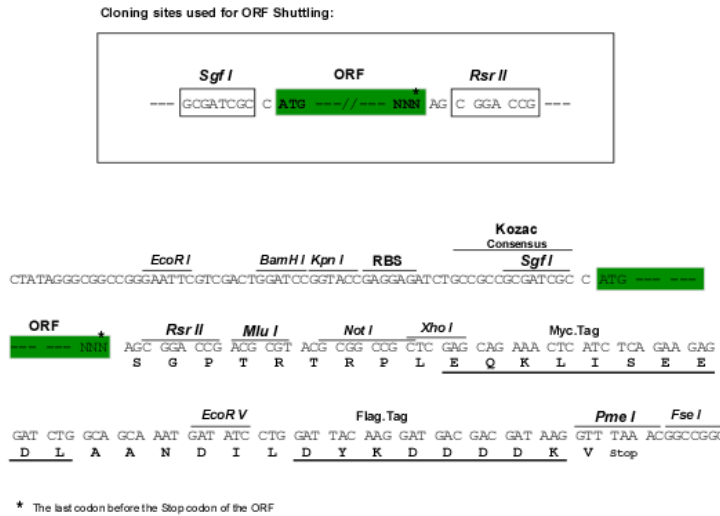
MSCSESPAANSFLVDSL ISSGRGEAGGGGGGAGGGGGGGYAHGGVYLPAAADLPYGLQSCGLFPTLGGK
 RNEAASP GSGGGGGLPGAHGYGSPIDLWLDAPRSCRM EPPDGPPPPQPPPPQPPPPQATSC
 SFAQNIKEESSYCLYDSADKCPKVSATAAELAPFPRGPPPDGCALGTSSGVPVPGYFRLSQAYGTAKGYG
 SGGGGAQQLGAGPFPAQPPGRGFDLPPALASGSADAARKERALDSPPPPTLACGSGGGGSGDDEEAHASS
 AAEELSPAPSESSKASPEKDSLGNKGENAANWLTAKSGRKRCPYTKHQTL E L E K E F L F N M Y L T R E R R L
 E I S R S V H L T D R Q V K I W F Q N R R M K L K M N R E N R I R E L T A N F N F S

SGPTRTRPLEQKLI SEEDLAANDILDYKDDDDKV

Chromatograms: https://cdn.origene.com/chromatograms/mk6190_e03.zip

Restriction Sites: SgfI-RsrII

Cloning Scheme:



ACCN: NM_018951

ORF Size: 1179 bp

OTI Disclaimer: The molecular sequence of this clone aligns with the gene accession number as a point of reference only. However, individual transcript sequences of the same gene can differ through naturally occurring variations (e.g. polymorphisms), each with its own valid existence. This clone is substantially in agreement with the reference, but a complete review of all prevailing variants is recommended prior to use. [More info](#)

OTI Annotation: This clone was engineered to express the complete ORF with an expression tag. Expression varies depending on the nature of the gene.

Components: The ORF clone is ion-exchange column purified and shipped in a 2D barcoded Matrix tube containing 10ug of transfection-ready, dried plasmid DNA (reconstitute with 100 ul of water).

Reconstitution Method:

1. Centrifuge at 5,000xg for 5min.
2. Carefully open the tube and add 100ul of sterile water to dissolve the DNA.
3. Close the tube and incubate for 10 minutes at room temperature.
4. Briefly vortex the tube and then do a quick spin (less than 5000xg) to concentrate the liquid at the bottom.
5. Store the suspended plasmid at -20°C. The DNA is stable for at least one year from date of shipping when stored at -20°C.

Note: Plasmids are not sterile. For experiments where strict sterility is required, filtration with 0.22um filter is required.

RefSeq: [NM_018951.2](#), [NP_061824.2](#)

RefSeq Size: 2648 bp

RefSeq ORF: 1233 bp

Locus ID: 3206

UniProt ID: [P31260](#)

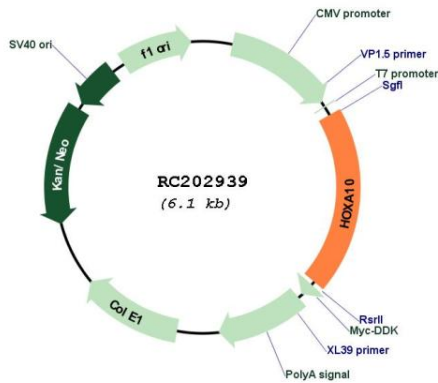
Cytogenetics: 7p15.2

Protein Families: Transcription Factors

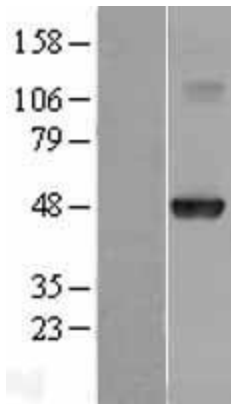
MW: 40.5 kDa

Gene Summary: In vertebrates, the genes encoding the class of transcription factors called homeobox genes are found in clusters named A, B, C, and D on four separate chromosomes. Expression of these proteins is spatially and temporally regulated during embryonic development. This gene is part of the A cluster on chromosome 7 and encodes a DNA-binding transcription factor that may regulate gene expression, morphogenesis, and differentiation. More specifically, it may function in fertility, embryo viability, and regulation of hematopoietic lineage commitment. Alternatively spliced transcript variants have been described. Read-through transcription also exists between this gene and the downstream homeobox A9 (HOXA9) gene. [provided by RefSeq, Mar 2011]

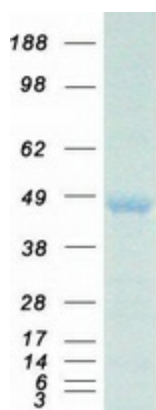
Product images:



Circular map for RC202939



Western blot validation of overexpression lysate (Cat# [LY402717]) using anti-DDK antibody (Cat# [TA50011-100]). Left: Cell lysates from untransfected HEK293T cells; Right: Cell lysates from HEK293T cells transfected with RC202939 using transfection reagent MegaTran 2.0 (Cat# [TT210002]).



Coomassie blue staining of purified HOXA10 protein (Cat# [TP302939]). The protein was produced from HEK293T cells transfected with HOXA10 cDNA clone (Cat# RC202939) using MegaTran 2.0 (Cat# [TT210002]).