

Product datasheet for **RC202937**

NRIP3 (NM_020645) Human Tagged ORF Clone

Product data:

Product Type: Expression Plasmids
Product Name: NRIP3 (NM_020645) Human Tagged ORF Clone
Tag: Myc-DDK
Symbol: NRIP3
Synonyms: C11orf14; NY-SAR-105
Mammalian Cell Selection: Neomycin
Vector: pCMV6-Entry (PS100001)
E. coli Selection: Kanamycin (25 ug/mL)
ORF Nucleotide Sequence: >RC202937 ORF sequence
Red=Cloning site Blue=ORF Green=Tags(s)

TTTTGTAATACGACTCACTATAGGGCGGCCGGAATTCGTCGACTGGATCCGGTACCGAGGAGATCTGCC
GCC**CGATCGCC**

ATGTTTTACTCAGGGCTCCTCACTGAGGGCGGCCGAAGGAGACCGACATGCGGGAGGGCGCTCACTGC
GACAGCAGCGCCGGATGAAGCAGGCGGTGCAGTTCATCCACAAGGACTCCGCCGACCTGCTGCCCTGGA
CGGCCTCAAGAAGCTGGGCTCGTCCAAGGACATGCAACCTCATAATATTCTGCAGAGGCGCCTCATGGAA
ACCAACCTGTCTAAGCTCCGAAGCGGTCCCGTGTCCCTGGGCCTCTAAGACGAACAACTCAATCAGG
CTAAGTCTGAGGGGCTAAAGAAGTCTGAGGAGGATGACATGATTTGGTTTCTTGCCAGTGTGCTGGAAA
GGATGTGAAAGCCTTGGTTGACACAGGCTGCCTATATAATCTCATCTCTTTGGCCTGTGTGGACAGATTG
GGACTCAAGGAGCATGTCAAATCCACAAGCATGAAGGAGAAAAGCTTTCTACCCCGGCATCTCAAAG
TAGTGGGCCAGATTGAGCACCTAGTGATCACACTGGGCTCCCTCCGCCTGGACTGCCAGCAGCTGTGGT
TGATGACAATGAGAAAACTTGTCCCTTGGTCTACAGACTCTCCGATCTCTGAAGTGATCATAAACTTG
GATAAGCACCGGCTGATCATGGGAAGACAGACAAGGAAGAAATCCCTTTTGTGGAGACAGTCTCTTTGA
ATGAAGACAACACTTCAGAAGCA

ACGCGTACGCGGCCGCTCGAGCAGAACTCATCTCAGAAGAGGATCTGGCAGCAAATGATATCCTGGATT
ACAAGGATGACGACGATAAGGTTTAA



[View online »](#)

Protein Sequence: >RC202937 protein sequence
Red=Cloning site Green=Tags(s)

```
MFYSGLLTEGGRKETDMREAASLRQRRMKQAVQFIHKDSADLLPLDGLKKLGSSKDMQPHNILQRRIME
TNLSKLRSGPRVPWASKTNKLNQAKSEGLKSEEDMILVSCQCAGKDVKALVDTGCLYNLISLACVDRL
GLKEHVKSHKHEGEKLSLPRHLKVVQIEHLVITLGSRLDCPAAVVDDNEKNLSLGLQTLRSLKCIINL
DKHRLIMGKTDKEEIPFVETVSLNEDNTSEA
```

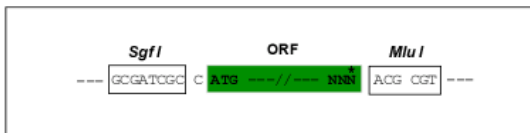
TRTRPLEQKLISEEDLAANDILDYKDDDDKV

Chromatograms: https://cdn.origene.com/chromatograms/mk6411_g01.zip

Restriction Sites: SgfI-MluI

Cloning Scheme:

Cloning sites used for ORF Shuttling:



* The last codon before the Stop codon of the ORF

ACCN: NM_020645

ORF Size: 723 bp

OTI Disclaimer: The molecular sequence of this clone aligns with the gene accession number as a point of reference only. However, individual transcript sequences of the same gene can differ through naturally occurring variations (e.g. polymorphisms), each with its own valid existence. This clone is substantially in agreement with the reference, but a complete review of all prevailing variants is recommended prior to use. [More info](#)

OTI Annotation: This clone was engineered to express the complete ORF with an expression tag. Expression varies depending on the nature of the gene.

Components: The ORF clone is ion-exchange column purified and shipped in a 2D barcoded Matrix tube containing 10ug of transfection-ready, dried plasmid DNA (reconstitute with 100 ul of water).

Reconstitution Method:

1. Centrifuge at 5,000xg for 5min.
2. Carefully open the tube and add 100ul of sterile water to dissolve the DNA.
3. Close the tube and incubate for 10 minutes at room temperature.
4. Briefly vortex the tube and then do a quick spin (less than 5000xg) to concentrate the liquid at the bottom.
5. Store the suspended plasmid at -20°C. The DNA is stable for at least one year from date of shipping when stored at -20°C.

Note: Plasmids are not sterile. For experiments where strict sterility is required, filtration with 0.22um filter is required.

RefSeq: [NM_020645.3](#)

RefSeq Size: 3809 bp

RefSeq ORF: 726 bp

Locus ID: 56675

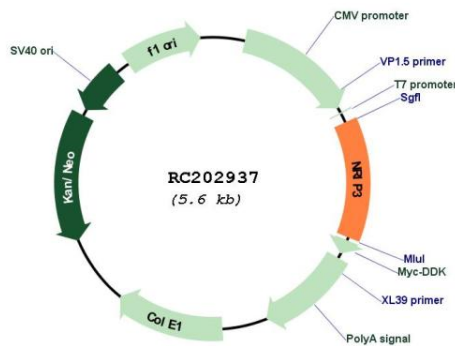
UniProt ID: [Q9NQ35](#)

Cytogenetics: 11p15.4

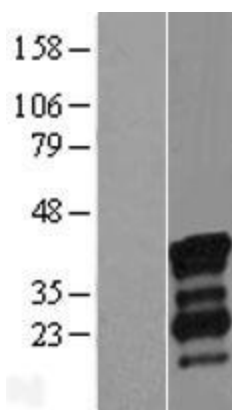
Protein Families: Druggable Genome

MW: 27 kDa

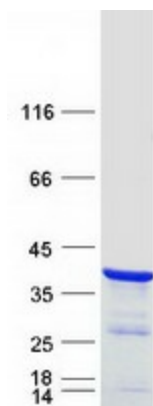
Product images:



Circular map for RC202937



Western blot validation of overexpression lysate (Cat# [LY412407]) using anti-DDK antibody (Cat# [TA50011-100]). Left: Cell lysates from untransfected HEK293T cells; Right: Cell lysates from HEK293T cells transfected with RC202937 using transfection reagent MegaTran 2.0 (Cat# [TT210002]).



Coomassie blue staining of purified NRIP3 protein (Cat# [TP302937]). The protein was produced from HEK293T cells transfected with NRIP3 cDNA clone (Cat# RC202937) using MegaTran 2.0 (Cat# [TT210002]).