

Product datasheet for RC202936

CLN8 (NM_018941) Human Tagged ORF Clone

Product data:

Product Type:	Expression Plasmids
Product Name:	CLN8 (NM_018941) Human Tagged ORF Clone
Tag:	Myc-DDK
Symbol:	CLN8
Synonyms:	C8orf61; EPMR; TLCD6
Vector:	pCMV6-Entry (PS100001)
E. coli Selection:	Kanamycin (25 ug/mL)
Cell Selection:	Neomycin
ORF Nucleotide Sequence:	>RC202936 ORF sequence Red=Cloning site Blue=ORF Green=Tags(s)

TTTTGTAATACGACTCACTATAGGGCGCCGGAATTCGTCGACTGGATCCGGTACCGAGGAGATCTGCC
GCC**CGGATCGCC**

ATGAATCCTGCGAGCGATGGGGCACATCAGAGAGCATTTTTGACCTGGACTATGCATCCTGGGGATCC
GCTCCACGCTGATGGTCGCTGGCTTTGTCTTCTACTTGGGCGTCTTTGTGGTCTGCCACCAGCTGCCTC
TTCCCTGAATGCCACTTACCGTTCTTTGGTGGCCAGAGAGAAGGTCTTCTGGGACCTGGCGCCACGCGT
GCAGTCTTTGGTGTTCAGAGCACAGCCGACGGCCTGTGGGCTCTGCTGGGGACCCTGTGCTGCATGCCG
ACAAGGCGCGTGGCCAGCAGAACTGGTGTCTGGTTTACATCACGACAGCAACGGGATTCTTTTGCTTTGA
AAATGTTGCAGTCCACCTGTCCAACCTTGATCTTCCGGACATTTGACTTGTCTGGTTATCCACCATCTC
TTTGCCTTTCTTGGGTTTCTTGGCTGCTTGGTCAATCTCCAAGCTGGCCACTATCTAGCTATGACCACGT
TGCTCCTGGAGATGAGCACGCCCTTTACCTGCGTTTCTGGATGCTCTTAAAGGCGGGCTGGTCCGAGTC
TCTGTTTTGGAAGCTCAACCAGTGGCTGATGATCACATGTTTCACTGCCGATGGTTCTAACCTACCAC
ATGTGGTGGGTGTGTTTCTGGCACTGGGACGGCCTGGTCAGCAGCCTGTATCTGCCTCATTTGACTGT
TCCTTGTGCGACTGGCTCTGCTTACGCTAATCATTAAATCCATATTGGACCATAAGAAGACTCAGCAGCT
TCTCAATCCGGTGGACTGGAACCTCGCACAGCCAGAAGCCAAGAGCAGGCCAGAAGGCAACGGCCAGCTG
CTGCGGAAGAAGAGGCCA

AG**CGGACCG**ACGCGTACGCGGCCGCTCGAGCAGAACTCATCTCAGAAGAGGATCTGGCAGCAAATGATATCC
TGGATTACAAGGATGACGACGATAAGGTTTAA



[View online »](#)

Protein Sequence: >RC202936 protein sequence
 Red=Cloning site Green=Tags(s)

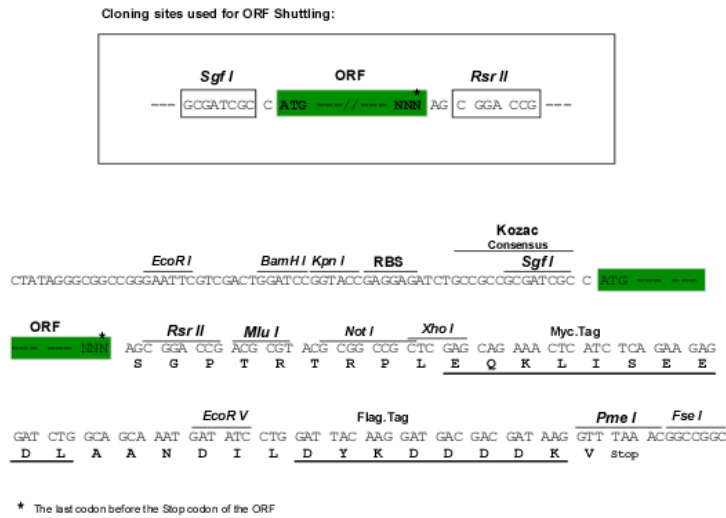
MNPASDGGTSESIFDLDYASWGIRSTLMVAGVFVYLVGVFVCHQLSSSLNATYRSLVAREKVFWDLAATR
 AVFGVQSTAAGLWALLGDPVLHADKARGQQNWCWFHITTATGFFCFENVAVHLSNLIIFRTFDLFLVIHHL
 FAFLGFLGCLVNLQAGHYLAMTTLLLEMSTPFTCVSWMLLKAGWSESLFWKLNQWLMIHMFHCRMVLTYP
 MWWVCFWHWDGLVSSLYLPHLTLFLVGLALLTLIINPYWTHKKTQQLLNPDVWNFAQPEAKSRPEGNGL
 LRKKRP

SGPTRRPLEQKLISEEDLAANDILDYKDDDDKV

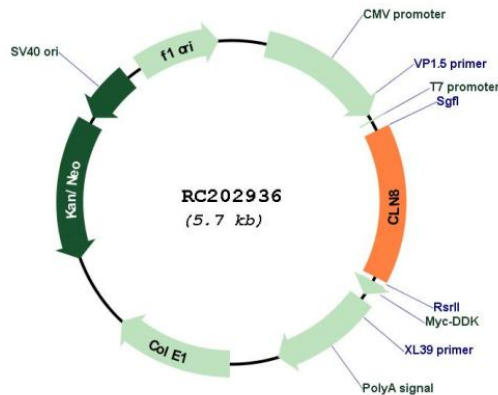
Chromatograms: https://cdn.origene.com/chromatograms/mk6614_e07.zip

Restriction Sites: SgfI-RsrII

Cloning Scheme:



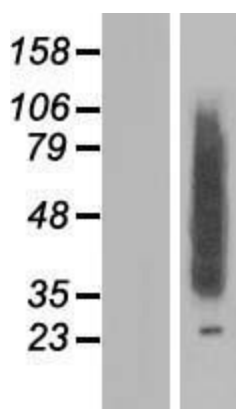
Plasmid Map:



ACCN: NM_018941

ORF Size:	858 bp
OTI Disclaimer:	The molecular sequence of this clone aligns with the gene accession number as a point of reference only. However, individual transcript sequences of the same gene can differ through naturally occurring variations (e.g. polymorphisms), each with its own valid existence. This clone is substantially in agreement with the reference, but a complete review of all prevailing variants is recommended prior to use. More info
OTI Annotation:	This clone was engineered to express the complete ORF with an expression tag. Expression varies depending on the nature of the gene.
RefSeq:	NM_018941.4
RefSeq Size:	7185 bp
RefSeq ORF:	861 bp
Locus ID:	2055
UniProt ID:	Q9UBY8 , A0A024QZ57
Domains:	TLC
Protein Families:	Druggable Genome, Transmembrane
MW:	32.8 kDa
Gene Summary:	This gene encodes a transmembrane protein belonging to a family of proteins containing TLC domains, which are postulated to function in lipid synthesis, transport, or sensing. The protein localizes to the endoplasmic reticulum (ER), and may recycle between the ER and ER-Golgi intermediate compartment. Mutations in this gene are associated with a disorder characterized by progressive epilepsy with cognitive disabilities (EPMR), which is a subtype of neuronal ceroid lipofuscinoses (NCL). Patients with mutations in this gene have altered levels of sphingolipid and phospholipids in the brain. [provided by RefSeq, Jul 2017]

Product images:



Western blot validation of overexpression lysate (Cat# [LY412865]) using anti-DDK antibody (Cat# [TA50011-100]). Left: Cell lysates from untransfected HEK293T cells; Right: Cell lysates from HEK293T cells transfected with RC202936 using transfection reagent MegaTran 2.0 (Cat# [TT210002]).