

Product datasheet for **RC202935**

PLCD4 (NM_032726) Human Tagged ORF Clone

Product data:

Product Type:	Expression Plasmids
Product Name:	PLCD4 (NM_032726) Human Tagged ORF Clone
Tag:	Myc-DDK
Symbol:	PLCD4
Mammalian Cell Selection:	Neomycin
Vector:	pCMV6-Entry (PS100001)
E. coli Selection:	Kanamycin (25 ug/mL)



[View online »](#)

ORF Nucleotide
Sequence:

>RC202935 representing NM_032726.

Blue=ORF Red=Cloning site Green=Tag(s)

```
GCTCGTTTAGTGAACCGTCAGAATTTTGTAAACGACTCACTATAGGGCGGCCGGGAATTCGTGACTG
GATCCGGTACCGAGGAGATCTGCCGCCACGATCGCC
ATGGCGTCCCTGCTGCAAGACCAGCTGACCACCTGATCAGGACTTGCTGCTGATGCAGGAAGGCATGTCC
ATGCGCAAGGTGAGGTCCAAAAGCTGGAAGAAGCTAAGATACTCAGACTTCAGAATGACGGCATGACA
GTCTGGCATGCACGGCAGGCCAGGGGCAGTGCCAAGCCAGCTTCTCAATCTCTGATGTGGAGACAATA
CGTAATGGCCATGATTCCGAGTTGCTGCGTAGCCTGGCAGAGGAGCTCCCCCTGGAGCAGGGCTTACC
ATTGTCTTCCATGGCCGCGCTCCAACCTGGACCTGATGGCCAACAGTGTGAGGAGGCCAGATATGG
ATGCGAGGGCTCCAGCTGTTGGTGGATCTTGTACCAGCATGGACCATCAGGAGCGCCTGGACCAATGG
CTGAGCGATTGGTTTCAACGTGGAGACAAAATCAGGATGGTAAGATGAGTTTCAAGAAGTTCAGCGG
TTATTGCACCTAATGAATGTGAAATGGACCAAGAATATGCCTTCAGTCTTTTTTCAGGCAGCAGACAG
TCCAGTCTGGAACCCTGGAAGGAGAAGAATTCGTACAGTTCTATAAGGCATTGACTAAACGTGCTGAG
GTGCAGGAAGTGTGAAAGTTTTTCAGCTGATGGCAGAAAGCTGACTCTGCTGGAATTTTTGGATTTT
CTCCAAGAGGAGCAGAAGGAGAGAGACTGCACCTCTGAGCTTGCTCTGGAACCTATTGACCGCTATGAA
CCTTCAGACAGTGGCAAACCTGCGGCATGTGCTGAGTATGGATGGCTTCTCAGCTACCTCTGCTCTAAG
GATGGAGACATCTTCAACCCAGCCTGCCTCCCCATCTATCAGGATATGACTCAACCCCTGAACCACTAC
TTCATCTGCTCTTCTCATAACACCTACCTAGTGGGGGACCAGCTTTGCGGCCAGAGCAGCGTCGAGGGGA
TATACGGGGCCCTGAAGCGGGGTGCCCTGCGTGGAGGTGGATGTATGGGATGGACCTAGCGGGGAA
CCTGTGTTTTACCACGGACACACCCTGACCTCCCGCATCTGTCAAAGATGTCGTGGCCACAGTAGCA
CAGTATGCCTTCCAGACATCAGACTACCCAGTCATCTTGTCCCTGGAGACCCACTGCAGCTGGGAGCAG
CAGCAGACCATGGCCCGTCACTGACTGAGATCCTGGGGAGCAGCTGCTGAGCACCACCTTGGATGGG
GTGCTGCCCACTCAGCTGCCCTCGCTGAGGAGCTTCGGAGGAAGATCCTGGTGAAGGGGAAGAAGTTA
ACACTTGAGGAAGACCTGGAATATGAGGAAGAGGAAGCAGAACCTGAGTTGGAAGAGTCAGAATTGGCG
CTGGAGTCCCAGTTTGGAGCTGAGCCTGAGCCCCAGGAGCAGAACCTTCAGAATAAGGACAAAAGAAG
AAATCCAAGCCCATCTTGTGTCAGCCCTCTTCCCTGGTTATCTACTTGAAGTCTGTCTATTCCGC
AGCTTCACACATTCAAAGGAGCACTACCACTTCTACGAGATATCATCTTTCTGAAACCAAGGCCAAG
CGCCTCATCAAGGAGGCTGGCAATGAGTTTGTGCAGCACAATACTTGGCAGTTAAGCCGTGTGTATCCC
AGCGGCCTGAGGACAGACTTTCCAACACAACCCCAAGAACTCTGGAATGCAGGCTGCCAGATGGTG
GCCATGAATATGCAGACTGCAGGCTTGAATGGACATCTGTGATGGGCATTTCCGCCAGAATGGCGGC
TGTGGCTATGTGCTGAAGCCAGACTTCTGCGTGATATCCAGAGTTCTTCCACCCTGAGAAGCCCATC
AGCCCTTTCAAAGCCAGACTCTCTAATCCAGGTGATCAGCGGTGAGCAACTCCCCAAAGTGGACAAG
ACCAAAGAGGGGTCCATTGTGGATCCACTGGTGAAGTGCAGATCTTTGGCGTTCGTCTAGACACAGCA
CGGCAGGAGACCAACTATGTGGAGAACAATGGTTTTAATCCATACTGGGGCAGACACTATGTTCCGG
GTGCTGGTGCCTGAACCTGCCATGCTGCGTTTTGTGGTAATGGATTATGACTGGAATCCCGAAATGAC
TTTATTGGTCAGTACACCCTGCCTGGACCTGCATGCAACAAGGTTACCGCCACATTACCTGCTGTCC
AAAGATGGCATCAGCCTCCGCCAGCTTCCATCTTTGTGTATATCTGCATCCAGGAAGCCCTGGAGGGG
GATGAGTCC
ACGCGTACGCGGCCGCTCGAGCAGAACTCATCTCAGAAGAGGATCTGGCAGCAAATGATATCCTGGAT
TACAAGGATGACGACGATAAGGTTTAAACGGCCGGC
```

Protein Sequence: >Peptide sequence encoded by RC202935
 Blue=ORF Red=Cloning site Green=Tag(s)

MASLLQDQLTTDQDLLLMQEGMSMRKVRKSWKKLRYFRLQNDGMTVWHARQARGSAKPSFSISDVETI
 RNGHDSSELLRSLAEELPLEQGFIVFHGRRSNLDMANSVEEAQIWMRGLQLLVDLVTSMHQERLDQW
 LSDWFQRGDKNQDGKMSFQEVQRLHLMLNVEMDQEYAFSLFQAADTSQSGTLEGEFVQFYKALTKRAE
 VQELFESFSADGQKLTLLFLDFLQEEQKERDCTSELALRIDRYEPDSGKLRHVL SMDGFLSYLCSK
 DGDIFNPACLPIYQDMTQPLNHYFICSSHNTYLVDGQLCGQSSVEGYIRALKRGCRCVEVDVWDGPGSE
 PVVYHGHTLTSRILFKDVVATVAQYAFQTSYDPVILSLETHCSWEQQTMARHLTEILGEQLLSTLTDG
 VLPTQLPSPEELRRKILVKGKLTLEEDLEYEEEEAEPELEESELALLESQFETEPEPEQNLQNKDKKK
 KSKPILCPALSSLVLYLKSVSFRSFTHSKEHYHFYEISSFSETKAKRLIKEAGNEFVQHNTWQLSRVYP
 SGLRTDSSNYPQELWNAGCQMVAMNMQTAGLEMDICDGHFRQNGGCGYVLPDFLRDIQSSFHPEKPI
 SPFKAQTLLIQVISGQQLPKVDKTEKGSIVDPLVKVQIFGVRLDARQETNYVENNGFNYPWQTLCFR
 VLPVELAMLRVVMYDWDKSRNDFIGQYTLPTWTCMQQGYRHIHLLSKDGISLRPASIFVYICIQEGLEG
 DES

TRTRPLEQKLISEEDLAANDILDYKDDDDKV

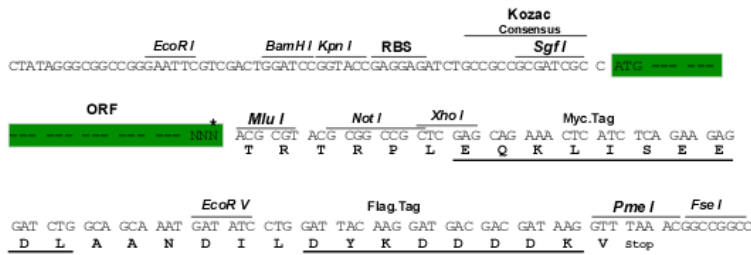
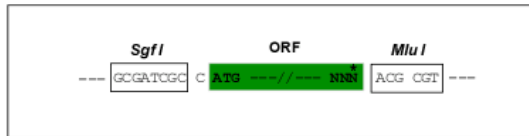
Recombinant protein using RC202935 also available, [TP302935](#)

Chromatograms: https://cdn.origene.com/chromatograms/mk6156_f10.zip

Restriction Sites: SgfI-MluI

Cloning Scheme:

Cloning sites used for ORF Shuttling:



* The last codon before the Stop codon of the ORF

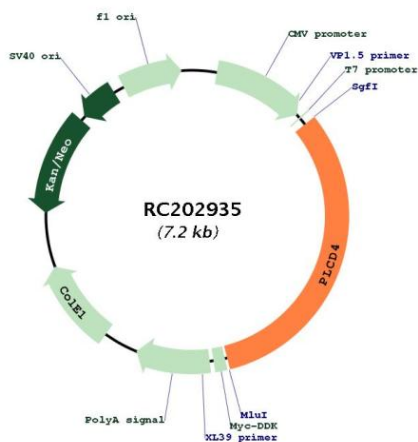
ACCN: NM_032726

ORF Size: 2286 bp

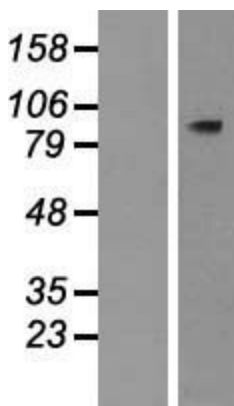
OTI Disclaimer: The molecular sequence of this clone aligns with the gene accession number as a point of reference only. However, individual transcript sequences of the same gene can differ through naturally occurring variations (e.g. polymorphisms), each with its own valid existence. This clone is substantially in agreement with the reference, but a complete review of all prevailing variants is recommended prior to use. [More info](#)

OTI Annotation:	This clone was engineered to express the complete ORF with an expression tag. Expression varies depending on the nature of the gene.
Components:	The ORF clone is ion-exchange column purified and shipped in a 2D barcoded Matrix tube containing 10ug of transfection-ready, dried plasmid DNA (reconstitute with 100 ul of water).
Reconstitution Method:	<ol style="list-style-type: none">1. Centrifuge at 5,000xg for 5min.2. Carefully open the tube and add 100ul of sterile water to dissolve the DNA.3. Close the tube and incubate for 10 minutes at room temperature.4. Briefly vortex the tube and then do a quick spin (less than 5000xg) to concentrate the liquid at the bottom.5. Store the suspended plasmid at -20°C. The DNA is stable for at least one year from date of shipping when stored at -20°C.
RefSeq Size:	3237 bp
RefSeq ORF:	2289 bp
Locus ID:	84812
UniProt ID:	Q9BRC7
Cytogenetics:	2q35
Domains:	C2, PI-PLC-X, PI-PLC-Y, PH, EFh
Protein Families:	Druggable Genome
Protein Pathways:	Calcium signaling pathway, Inositol phosphate metabolism, Metabolic pathways, Phosphatidylinositol signaling system
MW:	87.6 kDa
Gene Summary:	This gene encodes a member of the delta class of phospholipase C enzymes. Phospholipase C enzymes play a critical role in many cellular processes by hydrolyzing phosphatidylinositol 4,5-bisphosphate into two intracellular second messengers, inositol 1,4,5-trisphosphate and diacylglycerol. Expression of this gene may be a marker for cancer. [provided by RefSeq, Jan 2011]

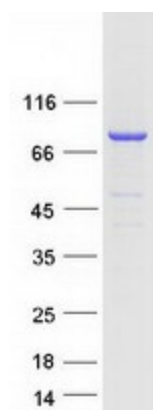
Product images:



Circular map for RC202935



Western blot validation of overexpression lysate (Cat# [LY409963]) using anti-DDK antibody (Cat# [TA50011-100]). Left: Cell lysates from untransfected HEK293T cells; Right: Cell lysates from HEK293T cells transfected with RC202935 using transfection reagent MegaTran 2.0 (Cat# [TT210002]).



Coomassie blue staining of purified PLCD4 protein (Cat# [TP302935]). The protein was produced from HEK293T cells transfected with PLCD4 cDNA clone (Cat# RC202935) using MegaTran 2.0 (Cat# [TT210002]).