

Product datasheet for **RC202934**

MURF2 (TRIM55) (NM_184086) Human Tagged ORF Clone

Product data:

Product Type:	Expression Plasmids
Product Name:	MURF2 (TRIM55) (NM_184086) Human Tagged ORF Clone
Tag:	Myc-DDK
Symbol:	MURF2
Synonyms:	MURF-2; muRF2; RNF29
Mammalian Cell Selection:	Neomycin
Vector:	pCMV6-Entry (PS100001)
E. coli Selection:	Kanamycin (25 ug/mL)



[View online »](#)

ORF Nucleotide Sequence:

>RC202934 ORF sequence
 Red=Cloning site Blue=ORF Green=Tags(s)

TTTTGTAATACGACTCACTATAGGGCGGCCGGAATTCGTCGACTGGATCCGGTACCGAGGAGATCTGCC
 GCC**CGGATCGCC**

ATGAGCGCATCTCTGAATTACAAATCTTTTTCCAAAGAGCAGCAGACCATGGATAACTTAGAGAAGCAAC
 TCATCTGTCCCATCTGCTTAGAGATGTTACGAAACCTGTGGTATTCTCCCTTGTGAGCACAACCTGTG
 TAGGAAATGTGCCAGTGATATTTTCCAGGCCTCTAACCCGATTTGCCCAAGAGGAGGTACCACCATG
 GCATCAGGGGGCCGATTCCGCTGCCATCCTGTAGACATGAAGTGGTTTTGGATAGACATGGGGTATATG
 GACTTCAGAGGAACCTGCTGGTGAAAAATCATTGACATCTACAAGCAGGAGTCCACCAGGCCAGAAAA
 GAAATCCGACCAGCCATGTGCGAGGAACATGAAGAGGAGCGCATCAACATCTACTGTCTGAACTGCGAA
 GTACCCACCTGCTCTGTGCAAGGTGTTGGTGCACACAAGACTGCCAGGTGGCTCCCCTCACTCATG
 TGTTCCAGAGACAGAAGTCTGAGCTCAGTGATGGCATCGCCATCCTCGTGGGCAGCAACGATCGAGTCCA
 GGGAGTGATCAGCCAGCTGGAAGACACCTGCAAAACTATCGAGGAATGTTGCAGAAAACAGAAACAAGAG
 CTTTGTGAGAAGTTTGATTACCTGTATGGCATTGTTGGAGGAGAGGAAGAATGAAATGACCCAAGTACCTA
 CCCGAACCAAGAGGAGAACTGGAACATGTCCGTGCTCTGATCAAAAAGTATTCTGATCATTTGGAGAA
 CGTCTCAAAGTTGGTTGAGTCAGGAATTCAGTTTATGGATGAGCCAGAAATGGCAGTGTTTCTGCAGAA
 GCCAAAACCTGCTAAAAAAATCTCGGAAGCATCAAAGGCATTTAGATGGAGAAAAATAGAACATGGCT
 ATGAGAACATGAACCACTTACAGTCAACCTCAATAGAGAAGAAAAGATAAATACGTGAAATTGACTTTTA
 CAGAGAAGATGAAGATGAAGAAGAAGAAGAGCGGAGAAGGAGAAAAAGAAGGAGAAGGAGAAGTGGGA
 GGAGAAGCAGTAGAAGTGAAGAGGTAGAAAATGTTCAAACAGAGTTTCCAGGAGAAGATGAAAACCCAG
 AAAAGCTTCCAGAGCTCTCTCAGGTGGAGCTGCAGGCTGCCCTGGGGCACTTCCAGTTTCTCTCCAGA
 GCCACCTCCAGCCCTGCCACCTGCTGCGGATGCCCTGTGACACAGATTGGATTGAGGCTCCTCCCTC
 CAGGGACAGGCTGCAGCTCCAGCGAGTGGCAGTGGAGCTGATTCTGAGCCAGCTCGCCATATCTTCTCT
 TTTCTGGTTGAACTCCCTAAATGAA

ACGCGTACGCGGCCGCTCGAGCAGAACTCATCTCAGAAGAGGATCTGGCAGCAAATGATATCCTGGATT
 ACAAGGATGACGACGATAAGGTTTAA

Protein Sequence:

>RC202934 protein sequence
 Red=Cloning site Green=Tags(s)

MSASLNYKFSKEQQTMDNLEKQLICPICLEMFTKPVVILPCQHNLCRKASDIFQASNPYLPTRGGTTM
 ASGGRFRCPSCRHEVVLDRHGVYGLQRNLLVENIIDIKYQESTRPEKKSQPMCEEHEEERINIYCLNCE
 VPTCSLCKVFGAHKDCQVAPLTHVFQRQKSELSDGIAILVGSNDRVQGVISQLEDTCKTIECCRKQKQE
 LCEKFDYLYGILEERKNEMTQVITRTQEEKLEHVRALIKKYSDHLENSKLVESGIQFMDEPEMAVFLQN
 AKTLLKKIASEASKAFQMEKIEHGYENMNHFTVNLNREEKIIREIDFYREDEDEEEEGEKEGEVEVG
 GEAVEVEEVENVTQTEFPGEDENPEKASELSQVELQAAPGALPVSSPEPPPALPPAADAPVTQIGFEAPPL
 QGQAAAPASGSGADSEPARHIFSWLNSLNE

TRTRPLEQKLISEEDLAANDILDYKDDDDKV

Chromatograms:

https://cdn.origene.com/chromatograms/mk6675_e10.zip

Restriction Sites:

Sgfl-Mlul

Cloning Scheme:


ACCN: NM_184086

ORF Size: 1356 bp

OTI Disclaimer: The molecular sequence of this clone aligns with the gene accession number as a point of reference only. However, individual transcript sequences of the same gene can differ through naturally occurring variations (e.g. polymorphisms), each with its own valid existence. This clone is substantially in agreement with the reference, but a complete review of all prevailing variants is recommended prior to use. [More info](#)

OTI Annotation: This clone was engineered to express the complete ORF with an expression tag. Expression varies depending on the nature of the gene.

Components: The ORF clone is ion-exchange column purified and shipped in a 2D barcoded Matrix tube containing 10ug of transfection-ready, dried plasmid DNA (reconstitute with 100 ul of water).

Reconstitution Method:

1. Centrifuge at 5,000xg for 5min.
2. Carefully open the tube and add 100ul of sterile water to dissolve the DNA.
3. Close the tube and incubate for 10 minutes at room temperature.
4. Briefly vortex the tube and then do a quick spin (less than 5000xg) to concentrate the liquid at the bottom.
5. Store the suspended plasmid at -20°C. The DNA is stable for at least one year from date of shipping when stored at -20°C.

RefSeq: [NM_184086.2](#)

RefSeq Size: 2483 bp

RefSeq ORF: 1359 bp

Locus ID: 84675

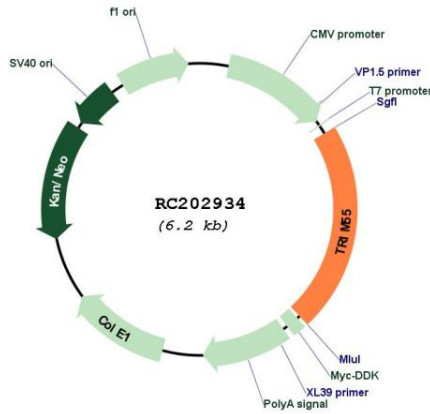
UniProt ID: [Q9BYV6](#)

Cytogenetics: 8q13.1

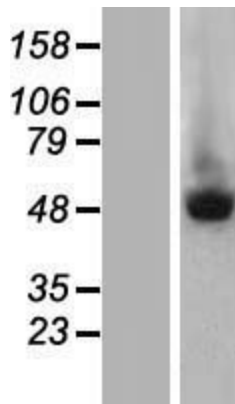
MW: 50.8 kDa

Gene Summary: The protein encoded by this gene contains a RING zinc finger, a motif known to be involved in protein-protein interactions. This protein associates transiently with microtubules, myosin, and titin during muscle sarcomere assembly. It may act as a transient adaptor and plays a regulatory role in the assembly of sarcomeres. Four alternatively spliced transcript variants encoding distinct isoforms have been described. [provided by RefSeq, Jul 2008]

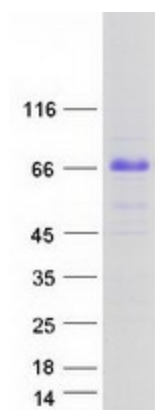
Product images:



Circular map for RC202934



Western blot validation of overexpression lysate (Cat# [LY405209]) using anti-DDK antibody (Cat# [TA50011-100]). Left: Cell lysates from untransfected HEK293T cells; Right: Cell lysates from HEK293T cells transfected with RC202934 using transfection reagent MegaTran 2.0 (Cat# [TT210002]).



Coomassie blue staining of purified TRIM55 protein (Cat# [TP302934]). The protein was produced from HEK293T cells transfected with TRIM55 cDNA clone (Cat# RC202934) using MegaTran 2.0 (Cat# [TT210002]).