

Product datasheet for **RC202926**

ROR alpha (RORA) (NM_134261) Human Tagged ORF Clone

Product data:

Product Type:	Expression Plasmids
Product Name:	ROR alpha (RORA) (NM_134261) Human Tagged ORF Clone
Tag:	Myc-DDK
Symbol:	ROR alpha
Synonyms:	IDDECA; NR1F1; ROR1; ROR2; ROR3; RZR-ALPHA; RZRA
Mammalian Cell Selection:	Neomycin
Vector:	pCMV6-Entry (PS100001)
E. coli Selection:	Kanamycin (25 ug/mL)



[View online »](#)

ORF Nucleotide Sequence:

>RC202926 representing NM_134261
 Red=Cloning site Blue=ORF Green=Tags(s)

TTTTGTAATACGACTCACTATAGGGCGGCCGGAATTCGTCGACTGGATCCGGTACCGAGGAGATCTGCC
 GCC**GCGATCGCC**

ATGGAGTCAGCTCCGGCAGCCCCGACCCCGCCGACGAGCCAGGCAGCAGCGCGCGGACGCGGCCG
 CCGGCTCCAGGGAGACCCGCTGAACCAGGAATCCGCCCGCAAGAGCGAGCCGCCTGCCCGGTGCGCAG
 ACAGAGCTATTCCAGCACCAGCAGAGGTATCTCAGTAACGAAGAAGACACATACATCTCAAATTGAAATT
 ATTCCATGCAAGATCTGTGGAGACAAATCATCAGGAATCCATTATGGTGTATTACATGTGAAGGCTGCA
 AGGGCTTTTTAGGAGAAGTACAGAAAGCAATGCCACCTACTCTGTCTCGTCAGAAGAACTGTTTGTAT
 TGATCGAACCCAGTAGAAACCGCTGCCAACACTGTCGATTACAGAAATGCCTTGCCGTAGGGATGTCTCGA
 GATGCTGTAAAATTTGGCCGAATGTCAAAAAGCAGAGAGACAGCTTGTATGCAGAAGTACAGAAACACC
 GGATGCAGCAGCAGCAGCGGACCACCAGCAGCAGCCTGGAGAGGCTGAGCCGCTGACGCCACCTACAA
 CATCTCGCCAACGGGCTGACGGAACCTCAGCAGCAGCTCAGTAACACTTACATTGACGGGCACACCCCTGAG
 GGGAGTAAAGCAGACTCCGCCGTAGCAGCTTCTACCTGGACATACAGCCTTCCCCAGACCAGTCAGGTC
 TTGATATCAATGGAATCAAAACGAAACCAATATGTGACTACACACCAGCATCAGGCTTCTTTCCCTACTG
 TTCGTTACCAACGGCGAGACTTCCCAACTGTGTCCATGGCAGAATTAGAACACCTTGCACAGAATATA
 TCTAAATCGCATCTGGAAACCTGCCAATACTTGAGAGAAGAGCTCCAGCAGATAACGTGGCAGACCTTTT
 TACAGGAAGAAATGAGAAGTATCAAAAACAGCAGCGGGAGGTGATGTGGCAATTGTGTCCATCAAAAT
 TACAGAAGCTATACAGTATGTGGTGGAGTTTGC AAAACGCATTGATGGATTTATGGAAGTGTGTCAAAT
 GATCAAATTTGTGCTTCTAAAAGCAGGTTCTCTAGAGGTGGTGTATCAGAATGTGCCGTGCCTTTGACT
 CTCAGAAACACCCGTACTTTGATGGGAAGTATGCCAGCCCGACGCTTCAAATCCTTAGGTTGTGA
 AGACTTTATTAGCTTTGTGTTGAAATTTGAAAGAGTTTATGTTCTATGCACCTGACTGAAGATGAAATT
 GCATTATTTTCTGCATTTGACTGATGTGAGCAGATCGCTCATGGCTGCAAGAAAAGGTA AAAATTTGAAA
 AACTGCAACAGAAAATTCAGCTAGCTCTTCAACACGTCCTACAGAAGAATCACCGAGAAGATGGAATACT
 AACAAAGTAAATATGCAAGGTGTCTACATTAAGAGCCTTATGTGGACGACATACAGAAAAGCTAATGGCA
 TTTAAAGCAATATACCCAGACATTGTGCGACTTCATTTCTCCATTATACAAGGAGTTGTTCACTTCAG
 AATTTGAGCCAGCAATGCAAATGATGGG

ACGCGTACGCGGCCGCTCGAGCAGAACTCATCTCAGAAGAGGATCTGGCAGCAAATGATATCCTGGATT
 ACAAGGATGACGACGATAAGGTTTAA

Protein Sequence:

>RC202926 representing NM_134261
 Red=Cloning site Green=Tags(s)

MESAPAAPDPAASEPGSSGADAAAAGSRETPLNQESARKSEPPAPVRRQSYSSTSRGISVTKKTHTSQIEI
 IPCKICGDKSSGIHYGVITCEGCKGFFRRSQSNATYSCPRQKNCLIDRTSRNRCQHRLQKCLAVGMSR
 DAVKFGKMSKKQRDSL YAEVQKHRMQQQQRDHQQPGEAEPLTPTYNISANGLTELHDDL SNYIDGHTPE
 GSKADSAVSSFYLDIQSPDQSGLDINGIKPEPICDYTPASGFFPYCSFTNGETSPTVSMAELEHLAQNI
 SKSHLETCQYLREELQQITWQTFLEEEIENYQNKQREVMWQLCAIKITEAIQYVVEFAKRIDGMELCQN
 DQIVLLKAGSLEVVFIRMCRAFDSQNNNTVYFDGKYASPDVFKSLGCEDFISFVFEFGKSLCSMHLTEDEI
 ALFSAFVMSADRSWLQEKVKIEKLQKIQQLALQHV LQKNHREDGILTKLICKVSTLRALCGRHTEK LMA
 FKAIYPDIVRLHFPLYKELFTSEFEPAMQIDG

TRTRPLEQKLISEEDLAANDILDYKDDDDKV

Chromatograms:

https://cdn.origene.com/chromatograms/mg2602_g01.zip

Restriction Sites:

SgfI-MluI

Cloning Scheme:


ACCN: NM_134261

ORF Size: 1569 bp

OTI Disclaimer: The molecular sequence of this clone aligns with the gene accession number as a point of reference only. However, individual transcript sequences of the same gene can differ through naturally occurring variations (e.g. polymorphisms), each with its own valid existence. This clone is substantially in agreement with the reference, but a complete review of all prevailing variants is recommended prior to use. [More info](#)

OTI Annotation: This clone was engineered to express the complete ORF with an expression tag. Expression varies depending on the nature of the gene.

Components: The ORF clone is ion-exchange column purified and shipped in a 2D barcoded Matrix tube containing 10ug of transfection-ready, dried plasmid DNA (reconstitute with 100 ul of water).

Reconstitution Method:

1. Centrifuge at 5,000xg for 5min.
2. Carefully open the tube and add 100ul of sterile water to dissolve the DNA.
3. Close the tube and incubate for 10 minutes at room temperature.
4. Briefly vortex the tube and then do a quick spin (less than 5000xg) to concentrate the liquid at the bottom.
5. Store the suspended plasmid at -20°C. The DNA is stable for at least one year from date of shipping when stored at -20°C.

Note: Plasmids are not sterile. For experiments where strict sterility is required, filtration with 0.22um filter is required.

RefSeq: [NM_134261.2](#)

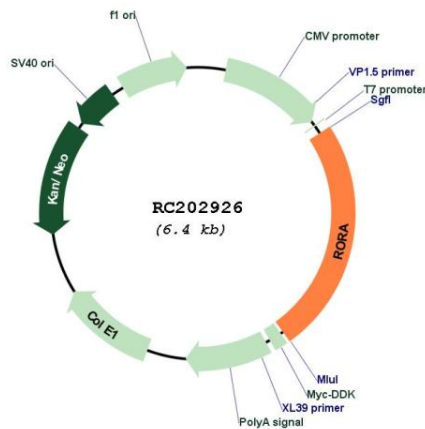
RefSeq Size: 1847 bp

RefSeq ORF: 1572 bp

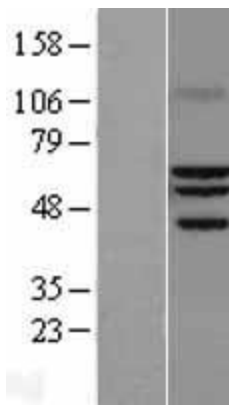
Locus ID: 6095

UniProt ID: [P35398](#)
Cytogenetics: 15q22.2
Protein Families: Druggable Genome, Nuclear Hormone Receptor, Transcription Factors
MW: 58.8 kDa
Gene Summary: The protein encoded by this gene is a member of the NR1 subfamily of nuclear hormone receptors. It can bind as a monomer or as a homodimer to hormone response elements upstream of several genes to enhance the expression of those genes. The encoded protein has been shown to interact with NM23-2, a nucleoside diphosphate kinase involved in organogenesis and differentiation, as well as with NM23-1, the product of a tumor metastasis suppressor candidate gene. Also, it has been shown to aid in the transcriptional regulation of some genes involved in circadian rhythm. Four transcript variants encoding different isoforms have been described for this gene. [provided by RefSeq, Feb 2014]

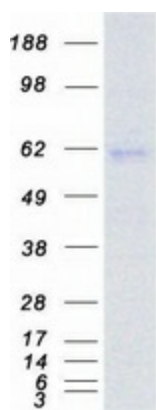
Product images:



Circular map for RC202926



Western blot validation of overexpression lysate (Cat# [LY403350]) using anti-DDK antibody (Cat# [TA50011-100]). Left: Cell lysates from untransfected HEK293T cells; Right: Cell lysates from HEK293T cells transfected with RC202926 using transfection reagent MegaTran 2.0 (Cat# [TT210002]).



Coomassie blue staining of purified RORA protein (Cat# [TP302926]). The protein was produced from HEK293T cells transfected with RORA cDNA clone (Cat# RC202926) using MegaTran 2.0 (Cat# [TT210002]).