

Product datasheet for RC202923

DLK (DLK1) (NM_003836) Human Tagged ORF Clone

Product data:

Product Type:	Expression Plasmids
Product Name:	DLK (DLK1) (NM_003836) Human Tagged ORF Clone
Tag:	Myc-DDK
Symbol:	DLK
Synonyms:	Delta1; DLK; DLK-1; FA1; pG2; Pref-1; PREF1; ZOG
Mammalian Cell Selection:	Neomycin
Vector:	pCMV6-Entry (PS100001)
E. coli Selection:	Kanamycin (25 ug/mL)
ORF Nucleotide Sequence:	>RC202923 ORF sequence Red=Cloning site Blue=ORF Green=Tags(s)

TTTTGTAATACGACTCACTATAGGGCGGCCGGAATTCGTCGACTGGATCCGGTACCGAGGAGATCTGCC
GCC**CGATCGCC**

ATGACCGCAGCCGAAGCCCTCTGCGCGTCTCTTGTCTCTGCTGGCTTTCGGCCACAGCACCTATGGGG
CTGAATGCTTCCCGCCTGCAACCCCCAAAATGGATTCTGCGAGGATGACAATGTTTGCAGGTGCCAGCC
TGGCTGGCAGGGTCCCCTTTGTGACCAGTGCCTGACCTCTCCCGCTGCCTTACGGACTCTGTGGAGAA
CCCGGGCAGTGCATTTGCACCGACGGCTGGGACGGGGAGCTCTGTGATAGAGATGTTCCGGCCTGTCTCT
CGGCCCTGTGCCAACACGGGACCTGCGTGAGCCTGGACGATGGCCTCTATGAATGCTCTGTGCCCC
CGGGTACTCGGAAAGGACTGCCAGAAAAGGACGGGCCCTGTGTGATCAACGGCTCCCCCTGCCAGCAC
GGAGGCACCTGCGTGGATGATGAGGGCCGGCCTCCCATGCCTCCTGCCTGTGCCCCCTGGCTTCTCAG
GCAATTTCTGCGAGATCGTGGCCAACAGCTGCACCCCAACCCATGCGAGAACGACGGCGTCTGCACTGA
CATCGGGGGCAGCTTCCGCTGCCGGTGCCAGCCGGCTTCATCGACAAGACCTGCAGCCGCCGGTGACC
AACTGCGCCAGCAGCCGTGCCAGAACGGGGCACCTGCCTGCAGCACACCCAGGTGAGCTACGAGTGTC
TGTGCAAGCCCGATTCACAGGTCTCACCTGTGTCAAGAAGCGCGCTGAGCCCCAGCAGGTACCCCG
TCTGCCAACGGCTATGGGCTGGCCTACCGCTGACCCCTGGGGTGCACGAGTCCGGTGCAGCAGCCG
GAGCACCGCATCTGAAGGTGTCCATGAAAGAGCTCAACAAGAAAACCCCTCTCCTCACCAGGGCCAGG
CCATCTGCTTACCATCCTGGGCGTGCTACCAGCCTGGTGTGCTGGGCACTGTGGGTATCGTCTTCT
CAACAAGTGCAGACCTGGGTGTCCAACCTGCGCTACAACCACATGCTGCGGAAGAAGAAGAACCTGCTG
CTTCAGTACAACAGCGGGGAGGACCTGGCCGTCAACATCATCTTCCCGAGAAGATCGACATGACCACCT
TCAGCAAGGAGCCGGCGACGAGGAGATC

ACGGTACGCGGCCGCTCGAGCAGAACTCATCTCAGAAGAGGATCTGGCAGCAATGATATCTGGATT
ACAAGGATGACGACGATAAGGTTTAA



[View online »](#)

Protein Sequence: >RC202923 protein sequence
Red=Cloning site Green=Tags(s)

MTATEALLRVLLLLLAFGHSTYGAECFPACNPQNGFCEDDNVCRCPGWQGPLCDQCVTSPGCLHGLCGE
 PGQCICTDGDWDELCDRDVACSSAPCANNGTCVSLDDGLYECSCAPGYSGKDCQKKGPCVINGSPCQH
 GGTCVDDEGRASHASCLCPPGFSGNFCEIVANSCTPNPCENDGVCTDIGGDFRCRCPAGFIDKTC SRPVT
 NCASSPCQNGGTCLQHTQVSYECLCKPEFTGLTCVKKRALSPQQVTRLPNGYGLAYRLTPGVHEL PVQQP
 EHRILKVMKELNKKTPLLTEGQAICFTILGVLTSLVVLGTVGI VFLNKCETWVSNLRYNHMLRKKKNLL
 LQYNSGEDLAVNIIFPEKIDMTTFSKEAGDEEI

TRTRPLEQKLISEEDLAANDILDYKDDDDKV

Chromatograms: https://cdn.origene.com/chromatograms/mk6076_a07.zip

Restriction Sites: SgfI-MluI

Cloning Scheme:



ACCN: NM_003836

ORF Size: 1149 bp

OTI Disclaimer: The molecular sequence of this clone aligns with the gene accession number as a point of reference only. However, individual transcript sequences of the same gene can differ through naturally occurring variations (e.g. polymorphisms), each with its own valid existence. This clone is substantially in agreement with the reference, but a complete review of all prevailing variants is recommended prior to use. [More info](#)

OTI Annotation: This clone was engineered to express the complete ORF with an expression tag. Expression varies depending on the nature of the gene.

Components: The ORF clone is ion-exchange column purified and shipped in a 2D barcoded Matrix tube containing 10ug of transfection-ready, dried plasmid DNA (reconstitute with 100 ul of water).

Reconstitution Method:

1. Centrifuge at 5,000xg for 5min.
2. Carefully open the tube and add 100ul of sterile water to dissolve the DNA.
3. Close the tube and incubate for 10 minutes at room temperature.
4. Briefly vortex the tube and then do a quick spin (less than 5000xg) to concentrate the liquid at the bottom.
5. Store the suspended plasmid at -20°C. The DNA is stable for at least one year from date of shipping when stored at -20°C.

Note: Plasmids are not sterile. For experiments where strict sterility is required, filtration with 0.22um filter is required.

RefSeq: [NM_003836.3](#)

RefSeq Size: 1599 bp

RefSeq ORF: 1152 bp

Locus ID: 8788

UniProt ID: [P80370](#)

Cytogenetics: 14q32.2

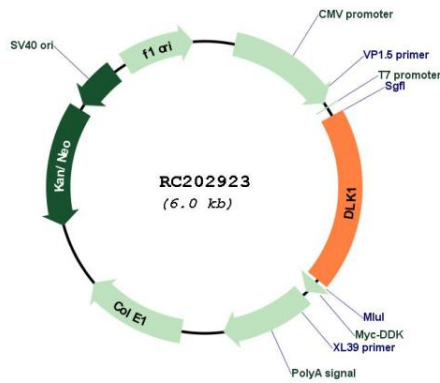
Domains: EGF_CA, EGF, EGF

Protein Families: Druggable Genome, ES Cell Differentiation/IPS, Transmembrane

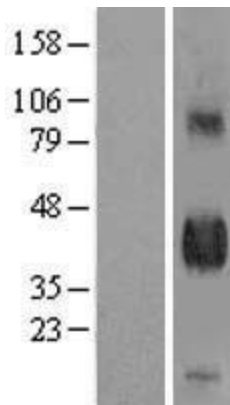
MW: 41.2 kDa

Gene Summary: This gene encodes a transmembrane protein that contains multiple epidermal growth factor repeats that functions as a regulator of cell growth. The encoded protein is involved in the differentiation of several cell types including adipocytes. This gene is located in a region of chromosome 14 frequently showing unparental disomy, and is imprinted and expressed from the paternal allele. A single nucleotide variant in this gene is associated with child and adolescent obesity and shows polar overdominance, where heterozygotes carrying an active paternal allele express the phenotype, while mutant homozygotes are normal. [provided by RefSeq, Nov 2015]

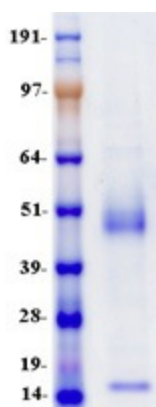
Product images:



Circular map for RC202923



Western blot validation of overexpression lysate (Cat# [LY401257]) using anti-DDK antibody (Cat# [TA50011-100]). Left: Cell lysates from untransfected HEK293T cells; Right: Cell lysates from HEK293T cells transfected with RC202923 using transfection reagent MegaTran 2.0 (Cat# [TT210002]).



Coomassie blue staining of purified DLK1 protein (Cat# [TP302923]). The protein was produced from HEK293T cells transfected with DLK1 cDNA clone (Cat# RC202923) using MegaTran 2.0 (Cat# [TT210002]).