

Product datasheet for **RC202910**

JM4 (PRAF2) (NM_007213) Human Tagged ORF Clone

Product data:

Product Type: Expression Plasmids
Product Name: JM4 (PRAF2) (NM_007213) Human Tagged ORF Clone
Tag: Myc-DDK
Symbol: JM4
Synonyms: JM4; Yip6a
Mammalian Cell Selection: Neomycin
Vector: pCMV6-Entry (PS100001)
E. coli Selection: Kanamycin (25 ug/mL)
ORF Nucleotide Sequence: >RC202910 ORF sequence
Red=Cloning site Blue=ORF Green=Tags(s)

TTTTGTAATACGACTCACTATAGGGCGCCGGGAATTCGTCGACTGGATCCGGTACCGAGGAGATCTGCC
GCC**CGATCGCC**

ATGTCGGAGGTGCGGCTGCCACCGCTACGCGCCCTGGACGACTTTGTTCTGGGGTGGCGCGTCTGGCGG
CTCCGGATCCATGCGACCCGAGCGATGGTCCACCGCTCATCAACAACCTCCTCTACTACCAACCAA
CTACCTTCTCTGCTTCGGCATCGGCCTCGCTCTCGCCGGGTACGTGCGGCCACTTCATACGCTCCTGAGC
GCGCTGGTAGTGGCGGTGCCCTCGGCGTGTGGTGTGGGAGCTGAGACCCGCGCAGCTGTGCGCCGT
GCCGCCGAGCCACCCTGCAGCCTGCCTGGCCGAGTGTGGCTCGGCCTCCTGGTGTCTGGGTGCG
GGGCGGCGCTTGACCTTCTGTTTCAGCATCGCCGGGCGGTGCTTCTGATCCTGGTGCACGCCTCGTTG
CGCCTGCGCAACCTTAAGAACAAGATTGAGAACAAGATCGAGAGCATTGGTCTCAAGCGGACGCCAATGG
GCCTGCTACTAGAGGCACTGGGACAAGAGCAGGAGGCTGGATCC

ACGCGTACGCGGCCGCTCGAGCAGAACTCATCTCAGAAGAGGATCTGGCAGCAAATGATATCCTGGATT
ACAAGGATGACGACGATAAGGTTTAA

Protein Sequence: >RC202910 protein sequence
Red=Cloning site Green=Tags(s)

MSEVRLPPLRALDDFVLGSARLAAPDPCDPQRWCHRVINLLYYQTNLLCFGIGLALAGYVRPLHTLLS
ALVVAVALGVLVWAAETRAAVRRCRRSHPAACLA AVLAVGLLVWVAGGACTFLFSIAGPVLLILVHASL
RLRNLKKNKIENKIESIGLKRTPMGLLLEALGQEAEAGS

TRTRPLEQKLISEEDLAANDILDYKDDDDKV

Chromatograms: https://cdn.origene.com/chromatograms/mk6146_d05.zip



[View online »](#)

Restriction Sites: SgfI-MluI

Cloning Scheme:



ACCN: NM_007213

ORF Size: 534 bp

OTI Disclaimer: The molecular sequence of this clone aligns with the gene accession number as a point of reference only. However, individual transcript sequences of the same gene can differ through naturally occurring variations (e.g. polymorphisms), each with its own valid existence. This clone is substantially in agreement with the reference, but a complete review of all prevailing variants is recommended prior to use. [More info](#)

OTI Annotation: This clone was engineered to express the complete ORF with an expression tag. Expression varies depending on the nature of the gene.

Components: The ORF clone is ion-exchange column purified and shipped in a 2D barcoded Matrix tube containing 10ug of transfection-ready, dried plasmid DNA (reconstitute with 100 ul of water).

Reconstitution Method:

1. Centrifuge at 5,000xg for 5min.
2. Carefully open the tube and add 100ul of sterile water to dissolve the DNA.
3. Close the tube and incubate for 10 minutes at room temperature.
4. Briefly vortex the tube and then do a quick spin (less than 5000xg) to concentrate the liquid at the bottom.
5. Store the suspended plasmid at -20°C. The DNA is stable for at least one year from date of shipping when stored at -20°C.

RefSeq: [NM_007213.3](#)

RefSeq Size: 1316 bp

RefSeq ORF: 537 bp

Locus ID: 11230

UniProt ID: [O60831](#)

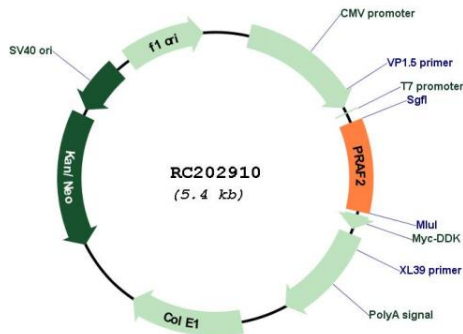
Cytogenetics: Xp11.23

Protein Families: Transmembrane

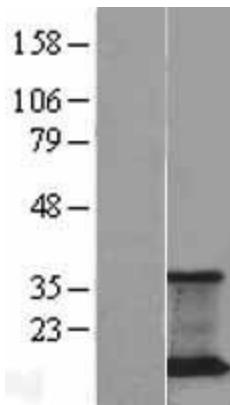
MW: 19.3 kDa

Gene Summary: May be involved in ER/Golgi transport and vesicular traffic. Plays a proapoptotic role in cerulenin-induced neuroblastoma apoptosis.[UniProtKB/Swiss-Prot Function]

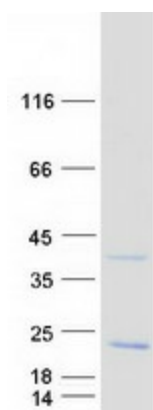
Product images:



Circular map for RC202910



Western blot validation of overexpression lysate (Cat# [LY402110]) using anti-DDK antibody (Cat# [TA50011-100]). Left: Cell lysates from untransfected HEK293T cells; Right: Cell lysates from HEK293T cells transfected with RC202910 using transfection reagent MegaTran 2.0 (Cat# [TT210002]).



Coomassie blue staining of purified PRAF2 protein (Cat# [TP302910]). The protein was produced from HEK293T cells transfected with PRAF2 cDNA clone (Cat# RC202910) using MegaTran 2.0 (Cat# [TT210002]).