

## Product datasheet for **RC202908**

### MOSPD3 (NM\_023948) Human Tagged ORF Clone

#### Product data:

|                           |   |
|---------------------------|---|
| Product Type:             | Expression Plasmids   |
| Product Name:             | MOSPD3 (NM_023948) Human Tagged ORF Clone                         |
| Tag:                      | Myc-DDK   |
| Symbol:                   | MOSPD3  |
| Synonyms:                 | CDS3; NET30   |
| Mammalian Cell Selection: | Neomycin  |
| Vector:                   | pCMV6-Entry (PS100001)  |
| E. coli Selection:        | Kanamycin (25 ug/mL)  |
| ORF Nucleotide Sequence:  | >RC202908 ORF sequence<br>Red=Cloning site Blue=ORF Green=Tags(s) |

TTTTGTAATACGACTCACTATAGGGCGGCCGGAATTCGTCGACTGGATCCGGTACCGAGGAGATCTGCC  
GCC**CGATCGCC**

ATGCGCCGTGGGGCGCCCAAGGACCAGGAGCTGGTGGTCCGGGGCCCCCTGGGCGGGGTCCCGGGCG  
CCCCTCCTCCCTTGGGACCCGTTGTCCCGGTCTGGTCTTCCCCGGATCTAGTATTCAGGGCGGACCA  
GCGGAGCGGACCCGACAGCTGCTGACCCTCTATAACCCACAGGAAGTGCCTTCGTTCCGAGTCTG  
TGCACAGCACCTGCCAAATACACGGTGTGGTACGCAGAGGGATATGTGAAGCCCCAGTCTTGATTGACA  
TTGTGATTCGCCATGTGGCACCCATTCCAGCCACTATGATGTCCAGGACCGCTTCGCAATTGAGCTGTC  
TGAGGAAGGAGCTGAGGGCCGAGTGGTGGGACGCAAGGACATTACCTCCATTCTGAGAGCCCCAGGTAC  
CCCTTGAGCTTCAGGGACAGCCAGATCCAGCGCCTCGCCAGGGCCTCCTGCTGGGACACCACCCCA  
CGGCCAGACACTTCAGGAGCACCCCGCCAGCAACTGGCCACCAGCTCCTTCCTCCTCTTGTGTCGAC  
GGGGATTGTGTGTGGCCTTCTGCTGCTCCCACTCCCGGACGAACTCGGCAGCCAGCTGCCTCAAGTC  
CTGCACGTCTCCCTGGGACAAAAGTTGGTGGCCGCTACGTCTTGGGCTCCTCACCATGGTGTCTCTCC  
GGACC

**ACGCGT**ACGCGGCCGCTCGAGCAGAACTCATCTCAGAAGAGGATCTGGCAGCAAATGATATCCTGGATT  
ACAAGGATGACGACGATAAGGTTTAA



[View online »](#)

**Protein Sequence:** >RC202908 protein sequence  
Red=Cloning site Green=Tags(s)

MRRGAPQDQELVGPGPPGRGSRGAPPPLGPVVPVLFPPDLVFRADQSRGPRQLLTLYNPTGTALRFRVL  
 CTAPAKYTVFDAEGYVKPQSCIDIVIRHVAPIPSHYDVQDRFRIELSEEGAEGRVVGRKDITSILRAPAY  
 PLELQGQPDAPRPGPPAGTPPTARHFQEHPRQQLATSSFLFLLTGIVSVAFLLPLPDELGSQLPQV  
 LHVSLGQKLVAAYVLGLLTMVFLRT

TRTRPLEQKLISEEDLAANDILDYKDDDDKV

**Chromatograms:** [https://cdn.origene.com/chromatograms/mk6579\\_b03.zip](https://cdn.origene.com/chromatograms/mk6579_b03.zip)

**Restriction Sites:** SgfI-MluI

**Cloning Scheme:**



**ACCN:** NM\_023948

**ORF Size:** 705 bp

**OTI Disclaimer:** The molecular sequence of this clone aligns with the gene accession number as a point of reference only. However, individual transcript sequences of the same gene can differ through naturally occurring variations (e.g. polymorphisms), each with its own valid existence. This clone is substantially in agreement with the reference, but a complete review of all prevailing variants is recommended prior to use. [More info](#)

**OTI Annotation:** This clone was engineered to express the complete ORF with an expression tag. Expression varies depending on the nature of the gene.

**Components:** The ORF clone is ion-exchange column purified and shipped in a 2D barcoded Matrix tube containing 10ug of transfection-ready, dried plasmid DNA (reconstitute with 100 ul of water).

**Reconstitution Method:**

1. Centrifuge at 5,000xg for 5min.
2. Carefully open the tube and add 100ul of sterile water to dissolve the DNA.
3. Close the tube and incubate for 10 minutes at room temperature.
4. Briefly vortex the tube and then do a quick spin (less than 5000xg) to concentrate the liquid at the bottom.
5. Store the suspended plasmid at -20°C. The DNA is stable for at least one year from date of shipping when stored at -20°C.

**RefSeq:** [NM\\_023948.5](#)

**RefSeq Size:** 1213 bp

**RefSeq ORF:** 708 bp

**Locus ID:** 64598

**UniProt ID:** [O75425](#)

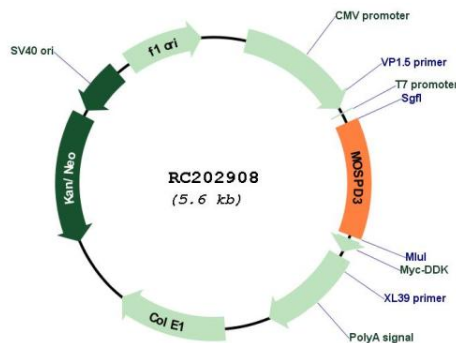
**Cytogenetics:** 7q22.1

**Protein Families:** Transmembrane

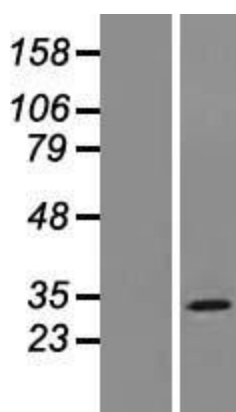
**MW:** 25.5 kDa

**Gene Summary:** This gene encodes a multi-pass membrane protein with a major sperm protein (MSP) domain. The deletion of a similar mouse gene is associated with defective cardiac development and neonatal lethality. Alternate transcriptional splice variants, encoding different isoforms, have been described. [provided by RefSeq, Jul 2008]

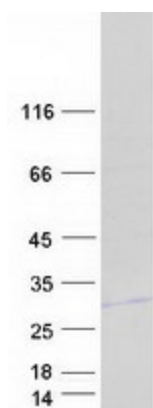
### Product images:



Circular map for RC202908



Western blot validation of overexpression lysate (Cat# [LY421671]) using anti-DDK antibody (Cat# [TA50011-100]). Left: Cell lysates from untransfected HEK293T cells; Right: Cell lysates from HEK293T cells transfected with [RC218313] using transfection reagent MegaTran 2.0 (Cat# [TT210002]).



Coomassie blue staining of purified MOSPD3 protein (Cat# [TP302908]). The protein was produced from HEK293T cells transfected with MOSPD3 cDNA clone (Cat# RC202908) using MegaTran 2.0 (Cat# [TT210002]).