

## Product datasheet for RC202902

### PITX3 (NM\_005029) Human Tagged ORF Clone

#### Product data:

Product Type:	Expression Plasmids
Product Name:	PITX3 (NM_005029) Human Tagged ORF Clone
Tag:	Myc-DDK
Symbol:	PITX3
Synonyms:	ASGD1; ASMD; ASOD; CTPP4; CTRCT11; PTX3
Mammalian Cell Selection:	Neomycin
Vector:	pCMV6-Entry (PS100001)
E. coli Selection:	Kanamycin (25 ug/mL)
ORF Nucleotide Sequence:	>RC202902 ORF sequence Red=Cloning site Blue=ORF Green=Tags(s)

TTTTGTAATACGACTCACTATAGGGCGGCCGGAATTCGTCGACTGGATCCGGTACCGAGGAGATCTGCC  
GCC**CGATCGCC**

ATGGAGTTCGGCCTGCTCAGCGAGGCAGAGGCCCGGAGCCCTGCCCTGTCGCTGTCAGACGCTGGCACTC  
CGCACCCCCAGCTCCCAGAGCACGGCTGCAAGGGCCAGGAGCACAGCGACTCAGAAAAGGCCTCGGCTTC  
GCTGCCCGGGCGCTCCCCAGAGGACGGTTCGCTGAAAAAGAAGCAGCGGGCGCAGCGCACGCACTTACC  
AGCCAGCAGCTACAGGAGCTAGAGGCGACCTTCCAGAGGAACCGTACCCCGACATGAGCACGCGCGAGG  
AGATTGCCGTGTGGACCAACCTCACCGAGGCCCGGTGCGGGTGTGGTTCAAGAACCAGCGCGCCAAATG  
GCGGAAGCGCGAGCGCAGCCAGCAGGCCGAGCTATGCAAAGGCAGCTTCGCGGCGCGCTCGGGGGGCTG  
GTGCCGCCCTACGAGGAGGTGTACCCCGCTACTCGTACGGCAACTGGCCGCCAAAGGCTTTGCCCCGC  
CGCTCGCCGCCAAGACCTTTCCATTCGCCCTTCAACTCGGTCAACGTGGGGCTCTGGCTTCGAGCCCGT  
CTTCTCGCCACCCAGCTCCATCGCCGCTCCATGGTGCCTCCGCGCGGCTGCCCGGGCACCGTGCCA  
GGGCTGGGGCCCTGCAGGGCTGGGCGGGGGCCCCCGGGTGGCTCCGGCCCGCTGTCTCCGGGG  
CCGTGTCTGCCCTTATGCCTCGGCCGCGCCGCGCGCGGCTGCCGCTTCCCCCTACGTCTATCG  
GGACCCGTGTAACCTGAGCCTGGCCAGCCTGCGGCTCAAAGCCAAACAGCACGCTCCTTCAGCTACCC  
GCTGTGCACGGGCGCCCCGGCAGCCAACCTTAGTCCGTGCCAGTACGCCGTGGAAAGGCCCGTA

**ACGCGT**ACGCGGGCGCTCGAGCAGAAACTCATCTCAGAAGAGGATCTGGCAGCAAATGATATCCTGGATT  
ACAAGGATGACGACGATAAGGTTAA



[View online »](#)

**Protein Sequence:** >RC202902 protein sequence  
Red=Cloning site Green=Tags(s)

MEFGLLSEAEARSPALSLSDAGTPHPQLPEHGCKGQEHSDSEKASASLPGGSPEDGSLKKKQRRQRTHFT  
 SQQLELEATFQRNRYPDMSTREEIAVWTNLTEARVVRVWFKNRRAKWRKRERSQQAE LCKGSFAAPL GGL  
 VPPYEEVYPGYSYGNWPPKALAPPLAAKTFPFAFN SVNVGPLASQPVFSPPSSIAASMPVSA AAAAPGTVP  
 GPGALQGLGGPPGLAPAAVSSGAVSCP YASAAAAAAAASSPVYVRDPCNSSLASLRLKAKQHASF SYP  
 AVHGPPPAANLSPCQYAVERP V

TRTRPLEQKLISEEDLAANDILDYKDDDDKV

**Chromatograms:** [https://cdn.origene.com/chromatograms/mk6267\\_h05.zip](https://cdn.origene.com/chromatograms/mk6267_h05.zip)

**Restriction Sites:** SgfI-MluI

**Cloning Scheme:**



**ACCN:** NM\_005029

**ORF Size:** 906 bp

**OTI Disclaimer:** The molecular sequence of this clone aligns with the gene accession number as a point of reference only. However, individual transcript sequences of the same gene can differ through naturally occurring variations (e.g. polymorphisms), each with its own valid existence. This clone is substantially in agreement with the reference, but a complete review of all prevailing variants is recommended prior to use. [More info](#)

**OTI Annotation:** This clone was engineered to express the complete ORF with an expression tag. Expression varies depending on the nature of the gene.

**Components:** The ORF clone is ion-exchange column purified and shipped in a 2D barcoded Matrix tube containing 10ug of transfection-ready, dried plasmid DNA (reconstitute with 100 ul of water).

**Reconstitution Method:**

1. Centrifuge at 5,000xg for 5min.
2. Carefully open the tube and add 100ul of sterile water to dissolve the DNA.
3. Close the tube and incubate for 10 minutes at room temperature.
4. Briefly vortex the tube and then do a quick spin (less than 5000xg) to concentrate the liquid at the bottom.
5. Store the suspended plasmid at -20°C. The DNA is stable for at least one year from date of shipping when stored at -20°C.

**RefSeq:** [NM\\_005029.2](#)

**RefSeq Size:** 1407 bp

**RefSeq ORF:** 909 bp

**Locus ID:** 5309

**UniProt ID:** [O75364](#)

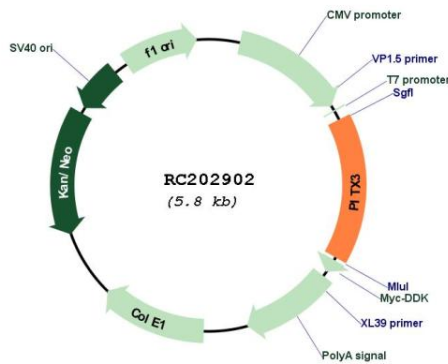
**Cytogenetics:** 10q24.32

**Protein Families:** Druggable Genome, Transcription Factors

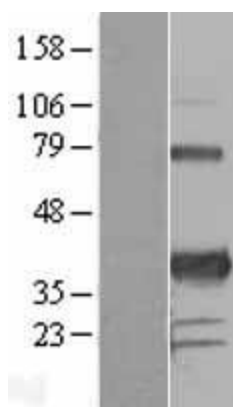
**MW:** 31.8 kDa

**Gene Summary:** This gene encodes a member of the RIEG/PITX homeobox family, which is in the bicoid class of homeodomain proteins. Members of this family act as transcription factors. This protein is involved in lens formation during eye development. Mutations of this gene have been associated with anterior segment mesenchymal dysgenesis and congenital cataracts. [provided by RefSeq, Jul 2008]

### Product images:



Circular map for RC202902



Western blot validation of overexpression lysate (Cat# [LY417591]) using anti-DDK antibody (Cat# [TA50011-100]). Left: Cell lysates from untransfected HEK293T cells; Right: Cell lysates from HEK293T cells transfected with RC202902 using transfection reagent MegaTran 2.0 (Cat# [TT210002]).