

Product datasheet for **RC202899**

EXTL3 (NM_001440) Human Tagged ORF Clone

Product data:

Product Type:	Expression Plasmids
Product Name:	EXTL3 (NM_001440) Human Tagged ORF Clone
Tag:	Myc-DDK
Symbol:	EXTL3
Synonyms:	BOTV; EXTL1L; EXTR1; ISDNA; REGR; RPR
Mammalian Cell Selection:	Neomycin
Vector:	pCMV6-Entry (PS100001)
E. coli Selection:	Kanamycin (25 ug/mL)



[View online »](#)

ORF Nucleotide Sequence:

>RC202899 ORF sequence
 Red=Cloning site Blue=ORF Green=Tags(s)

TTTTGTAATACGACTCACTATAGGGCGGCCGGGAATTCGTCGACTGGATCCGGTACCGAGGAGATCTGCC
 GCC**CGCATCGCC**

ATGACAGGCTATACCATGCTGCGGAATGGGGCGCGGGGAACGGAGGTCAGACCTGCATGCTGCGCTGGT
 CCAACCGCATCCGCCTCACGTGGCTCAGCTTCAGGCTCTTTGTCATCCTGGTCTTCTTCCCGCTCATCGC
 CCACTATTACCTCACCCTCTGGATGAGGCTGATGAGGCAGGCAAGCGGATTTTTGGTCCCCGGGTGGG
 AACGAGCTGTGCGAGGTGAAGCACGTGCTGGATCTGTGCCGCATCCGGGAGTCGGTGAGTGAAGAGCTCC
 TGCAGCTGGAGGCCAAGCGCCAAGAGCTGAACAGCGAGATCGCCAAGCTGAATCTGAAGATCGAAGCCTG
 TAAGAAGAGCATTGAGAACGCCAAGCAGGACCTGCTCCAGCTCAAGAATGTCATCAGCCAGACCGAGCAT
 TCCTACAAGGAGCTCATGGCCAGAACCAGCCAAAGCTGTCCCTGCCATCCGACTGCTCCAGAGAAGG
 ACGATGCCGGCTCCCTCCCCGAAGGCCACTCGGGGCTGCCGGTACACAAGCTTTGATTATCTCG
 TTGCCCTCTCACCTCTGGCTTCCCGGTCTACGTCTATGACAGTGACCAGTTTGTCTTTGGCAGCTACCTG
 GATCCCTTGGTCAAGCAGGCTTTTCAGGGCAGCAGCAGGCTAACGTTTATGTTACAGAAAATGCAGACA
 TCGCCTGCCTTTACGTGATACTAGTGGGAGAGATGCAGGAGCCGGTGGTCTGCGGCCTGCTGAGCTGGA
 GAAGCAGTTGATTCCCTGCCACACTGGCGGACGGATGGACACAACCATGTCATCATCAATCTGTACAGT
 AAGTCAGATACACAGAACCTTCTCTATAACGTCAGTACTGGCCGTGCCATGGTGGCCAGTCCACCTTCT
 ACACTGTCAGTACAGACCTGGCTTTGACTTGGTCGATACCCGCTGGTCCATGCCATGTCTGAGCCAA
 CTTTCATGAAAATCCACACAGGTGCCGGTGAAGCGGAAATATCTTTCACCTCCAGGGCGAGAAGATT
 GAGTCTCTGAGGTCTAGCCTTCAGGAGGCCGCTCCTTCGAAGAGGAAATGGAGGGCGACCTCCCGCCG
 ACTACGATGACCGGATCATTGCCACCTGAAGGCGGTGCAGGACAGCAAGCTGGATCAGTCTCTGGTGG
 ATTCACCTGCAAAAACCGCCAAACCCAGCCTGCCAACTGAGTGGGCACTGTGTGGAGAGCGGGGAGAC
 CGTTGGAATTGCTGAAGCTCTCCACCTTCGCCCTCATCATTACCCCGGGGACCTCGCTTGGTTATTT
 CCTCTGGGTGTGCAACACGGCTCTTCGAAGCCCTGGAAGTCGGTGCCGTCCCGGTGGTGTGGGGGAGCA
 GGTCCAGCTTCCCTACCAGGACATGCTGCAGTGAACGAGGCGGCCCTGGTGGTGCACAAAGCCTCGTGT
 ACCGAGGTTCAATTCCTGCTCAGAAGCCTCTCCGATAGTGACCTCCTGGCTATGAGGCGGCAAGGCCGT
 TTCTCTGGGAGACTTACTTCTCCACTGCTGACAGTATTTTAATACCGTGTGGCTATGATTAGGACTCG
 CATCCAGATCCCAGCCGCTCCCATCCGGGAAGAGGCGGCAGCTGAGATCCCCACCGTTCAGGCAAGGCC
 GCTGGAAGTACCCCAACATGGCTGACAACGGGGACCTGGACCTGGGGCCAGTGGAGACGGAGCCGCCCT
 ACGCCTCACCCAGATACCTCCGCAATTTCACTCTGACTGTCACTGACTTTTACCGCAGCTGGAAGTGTGC
 TCCAGGGCCTTTCCATCTTTTCCCCCACTCCCTTTGACCCTGTGTGCCCTCAGAGGCCAAATTTCTTG
 GGCTCAGGGACTGGCTTTTCGGCCTATTGGTGGTGGAGCTGGGGGTTCTGGCAAGGAATTTAGGCAGCGC
 TTGGAGGCAATGTTCCCCGAGAGCAGTTCACGGTGGTGTGTTGACTTATGAGCGGGAGGAAGTGCTTAT
 GAACCTTTAGAGAGGCTGAATGGCCTCCCTTACCTGAACAAGGTCGTGGTGGTGTGGAATTTCTCCCAAG
 CTGCCATCAGAGGACCTTCTGTGGCCTGACATTGGCGTCCCCATCATGGTGGTCCGACTGAGAAGAACA
 GTTTGAACAACCGATTCTTACCCTGGAATGAAATTGAGACAGAGGCCATCCTGTCCATTGATGACGATGC
 TCACCTCCGCCATGACGAAATCATGTTTGGGTTCCGGGTGTGGAGAGAAGCTCGGGACCGCATCGTGGG
 TTCCCTGGCCGTTACCACGCATGGGACATCCCCCATCAGTCTGGCTCTACAACCTCAACTACTCCTGTG
 AGCTGTCCATGGTGTGACAGGTGCTGCCTTCTTTCACAAGTATTATGCCTACCTGTATTCTTATGTGAT
 GCCCCAGGCCATCCGGGACATGGTGGATGAATACATCAACTGTGAGGACATTGCCATGAACCTTCTTGTG
 TCCCACATCACTCGAAGCCCCCATCAAGGTGACCTCACGGTGGACATTCCGATGCCAGGATGCCCTC
 AGGCCCTGTCTCATGACTCCCACTTCCACGAGCGGCACAAGTGCATCAACTTCTTCTGTAAGGTGTA
 CGGCTACATGCCCTCCTGTACACGCAGTTCAGGGTGGATTCTGTGCTCTCAAGACACGCTGCCCAT
 GACAAGACCAAGTCTTCAAGTTTATC

ACGCGTACGCGGCCGCTCGAGCAGAAACTCATCTCAGAAGAGGATCTGGCAGCAAATGATATCCTGGATT
 ACAAGGATGACGACGAT AAGGTTTAA

Protein Sequence: >RC202899 protein sequence
Red=Cloning site Green=Tags(s)

```

MTGYTMLRNGGAGNGGQTCMLRWSNRIRLTWLSFTL FVILVFFPLIAHYLLTTLDEADEAGKRIFGPRVG
NELCEVKHVL D LCR IRESVSEELLQLEAKRQELNSEIAKLNKIEACKKSIENAKQDLLQLKNVISQTEH
SYKELMAQNQPKLSLPIRLLPEKDDAGLPPP KATRGCR LHNCFDYSRCPLTSGFPVYVYDS DQFVFGSYL
DPLVKQAFQATARANVYVTENADIACL YVILV GEMQEPVVL RPAELEKQLYSLPHWRTDGHNHVIINLSR
KSDTQNLLYNVSTGRAMVAQSTFYTVQYRPGFDL VVSPLVHAMSEPNFMEIPPQVPVKRKYLFTFQGEKI
ESLRSSLQEARSFEEEMEGDPPADYDDRI IATLKAVQDSKLDQVLVEFTCKNQPKPSLPT EWALCGERED
RLELLKLSTFAL IITPGDPRLVISSGCATRLFEALEVGAVPVVLGEQVQLPYQDMLQWNEAALVVPKPRV
TEVHFLRLSLSDSL LAMRRQGRFLWET YFSTADSI FNTVLAMIRTRI QIPAAP IREEAAA EI PHRS GKA
AGTDPNMADNGDL D L G P V E T E P P Y A S P R Y L R N F T L T V T D F Y R S W N C A P G P F H L F P H T P F D P V L P S E A K F L
G S G T G F R P I G G G A G G S G K E F Q A A L G G N V P R E Q F T V V M L T Y E R E E V L M N S L E R L N G L P Y L N K V V V V W N S P K
L P S E D L L W P D I G V P I M V R T E K N S L N N R F L P W N E I E T E A I L S I D D A H L R H D E I M F G F R V W R E A R D R I V G
F P G R Y H A W D I P H Q S W L Y N S N Y S C E L S M V L T G A A F F H K Y Y A Y L S Y V M P Q A I R D M V D E Y I N C E D I A M N F L V
S H I T R K P P I K V T S R W T F R C P G C P Q A L S H D D S H F H E R H K C I N F F V K V Y G Y M P L L Y T Q F R V D S V L F K T R L P H
D K T K C F K F I
    
```

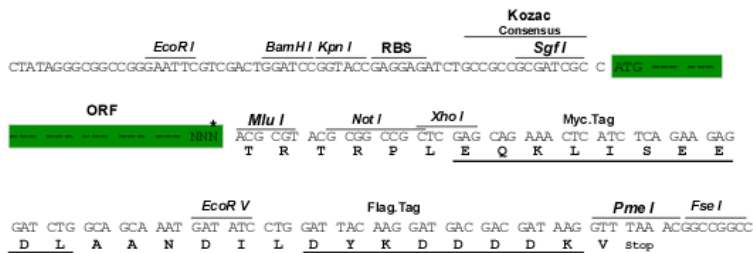
TRTRPLEQKLISEEDLAANDILDYKDDDDKV

Chromatograms: https://cdn.origene.com/chromatograms/mk6209_f12.zip

Restriction Sites: SgfI-MluI

Cloning Scheme:

Cloning sites used for ORF Shuttling:



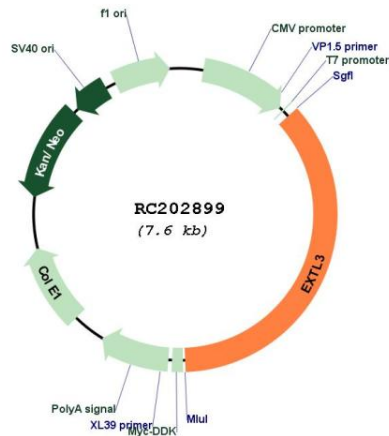
* The last codon before the Stop codon of the ORF

ACCN: NM_001440

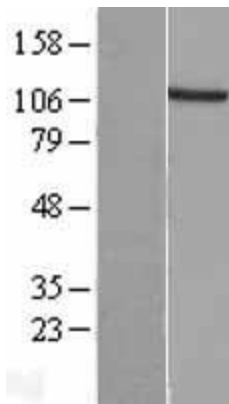
ORF Size: 2757 bp

OTI Disclaimer:	The molecular sequence of this clone aligns with the gene accession number as a point of reference only. However, individual transcript sequences of the same gene can differ through naturally occurring variations (e.g. polymorphisms), each with its own valid existence. This clone is substantially in agreement with the reference, but a complete review of all prevailing variants is recommended prior to use. More info
OTI Annotation:	This clone was engineered to express the complete ORF with an expression tag. Expression varies depending on the nature of the gene.
Components:	The ORF clone is ion-exchange column purified and shipped in a 2D barcoded Matrix tube containing 10ug of transfection-ready, dried plasmid DNA (reconstitute with 100 ul of water).
Reconstitution Method:	<ol style="list-style-type: none">1. Centrifuge at 5,000xg for 5min.2. Carefully open the tube and add 100ul of sterile water to dissolve the DNA.3. Close the tube and incubate for 10 minutes at room temperature.4. Briefly vortex the tube and then do a quick spin (less than 5000xg) to concentrate the liquid at the bottom.5. Store the suspended plasmid at -20°C. The DNA is stable for at least one year from date of shipping when stored at -20°C.
RefSeq:	NM_001440.4
RefSeq Size:	6351 bp
RefSeq ORF:	2760 bp
Locus ID:	2137
UniProt ID:	O43909
Cytogenetics:	8p21.1
Domains:	Exostosin
Protein Families:	Transmembrane
Protein Pathways:	Heparan sulfate biosynthesis, Metabolic pathways
MW:	104.7 kDa
Gene Summary:	This gene encodes a single-pass membrane protein which functions as a glycosyltransferase. The encoded protein catalyzes the transfer of N-acetylglucosamine to glycosaminoglycan chains. This reaction is important in heparin and heparan sulfate synthesis. Alternative splicing results in the multiple transcript variants. [provided by RefSeq, Nov 2012]

Product images:



Circular map for RC202899



Western blot validation of overexpression lysate (Cat# [LY419936]) using anti-DDK antibody (Cat# [TA50011-100]). Left: Cell lysates from untransfected HEK293T cells; Right: Cell lysates from HEK293T cells transfected with RC202899 using transfection reagent MegaTran 2.0 (Cat# [TT210002]).