

## Product datasheet for **RC202897**

### **ATF3 (NM\_001030287) Human Tagged ORF Clone**

#### Product data:

**Product Type:** Expression Plasmids  
**Product Name:** ATF3 (NM\_001030287) Human Tagged ORF Clone  
**Tag:** Myc-DDK  
**Symbol:** ATF3  
**Mammalian Cell Selection:** Neomycin  
**Vector:** pCMV6-Entry (PS100001)  
**E. coli Selection:** Kanamycin (25 ug/mL)  
**ORF Nucleotide Sequence:** >RC202897 ORF sequence  
Red=Cloning site Blue=ORF Green=Tags(s)

TTTTGTAATACGACTCACTATAGGGCGGCCGGAATTCGTCGACTGGATCCGGTACCGAGGAGATCTGCC  
GCC**CGATCGCC**

ATGATGCTTCAACACCCAGGCCAGGTCTCTGCCTCGGAAGTGAGTGCTTCTGCCATCGTCCCCTGCCTGT  
CCCCTCTGGGTCACTGGTGTGGAGGATTTGCTAACCTGACGCCCTTTGTCAAGGAAGAGCTGAGGTT  
TGCCATCCAGAACAAGCACCTCTGCCACCGGATGTCCTCTGCGTGGAATCAGTCACTGTCAGCGACAGA  
CCCCCTCGGGGTGCCATCACAAAAGCCGAGGTAGCCCCGAAGAAGATGAAAGGAAAAAGAGGCGACGAG  
AAAGAAATAAGATTGACAGTGCAAAGTCCGAAACAAGAAGAAGGAGAAGACGGAGTGCCCTGCAGAAAGA  
GTCGGAGAAGCTGAAAAGTGTGAATGCTGAAGTGAAGGCTCAGATTGAGGAGCTCAAGAACGAGAAGCAG  
CATTTGATATACATGCTCAACCTTCATCGGCCACGTGTATTGTCCGGGCTCAGAATGGGAGGACTCCAG  
AAGATGAGAGAAACCTCTTTATCCAACAGATAAAAGAAGGAACATTGCAGAGC

**ACGCGT**ACGCGGCCGCTCGAGCAGAACTCATCTCAGAAGAGGATCTGGCAGCAAATGATATCCTGGATT  
ACAAGGATGACGACGATAAGGTTTAA

**Protein Sequence:** >RC202897 protein sequence  
Red=Cloning site Green=Tags(s)

MMLQHPGQVSASEVSASAIVPCLSPPGSLVFEDFANLTPFVKEELRFAIQNKHLCHRMSSALESVTVSDR  
PLGVSITKA EVAPEEDERKRRRERNKIAAAKCRNKKKEKTECLQKSEKLESVNAELKAQIEELKNEKQ  
HLIYMLNLHRPTCIVRAQNGRTPEDERNLFIQQIKEGTLQS

**TRTRPLEQKLI**SEEDLAANDILDYKDDDDKV

**Chromatograms:** [https://cdn.origene.com/chromatograms/mk6411\\_a07.zip](https://cdn.origene.com/chromatograms/mk6411_a07.zip)

**Restriction Sites:** SgfI-MluI



[View online »](#)

**Cloning Scheme:**


**ACCN:** NM\_001030287

**ORF Size:** 543 bp

**OTI Disclaimer:** The molecular sequence of this clone aligns with the gene accession number as a point of reference only. However, individual transcript sequences of the same gene can differ through naturally occurring variations (e.g. polymorphisms), each with its own valid existence. This clone is substantially in agreement with the reference, but a complete review of all prevailing variants is recommended prior to use. [More info](#)

**OTI Annotation:** This clone was engineered to express the complete ORF with an expression tag. Expression varies depending on the nature of the gene.

**Components:** The ORF clone is ion-exchange column purified and shipped in a 2D barcoded Matrix tube containing 10ug of transfection-ready, dried plasmid DNA (reconstitute with 100 ul of water).

- Reconstitution Method:**
1. Centrifuge at 5,000xg for 5min.
  2. Carefully open the tube and add 100ul of sterile water to dissolve the DNA.
  3. Close the tube and incubate for 10 minutes at room temperature.
  4. Briefly vortex the tube and then do a quick spin (less than 5000xg) to concentrate the liquid at the bottom.
  5. Store the suspended plasmid at -20°C. The DNA is stable for at least one year from date of shipping when stored at -20°C.

**Note:** Plasmids are not sterile. For experiments where strict sterility is required, filtration with 0.22um filter is required.

**RefSeq:** [NM\\_001030287.3](#)

**RefSeq Size:** 1935 bp

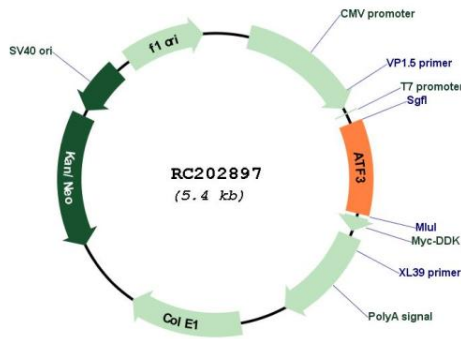
**RefSeq ORF:** 546 bp

**Locus ID:** 467

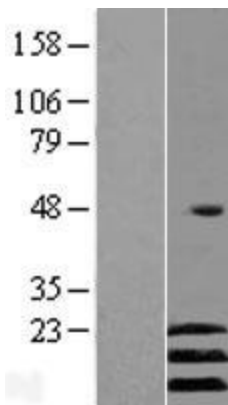
**UniProt ID:** [P18847](#)  
**Cytogenetics:** 1q32.3  
**Protein Families:** Transcription Factors  
**MW:** 20.6 kDa

**Gene Summary:** This gene encodes a member of the mammalian activation transcription factor/cAMP responsive element-binding (CREB) protein family of transcription factors. This gene is induced by a variety of signals, including many of those encountered by cancer cells, and is involved in the complex process of cellular stress response. Multiple transcript variants encoding different isoforms have been found for this gene. It is possible that alternative splicing of this gene may be physiologically important in the regulation of target genes. [provided by RefSeq, Apr 2011]

### Product images:



Circular map for RC202897



Western blot validation of overexpression lysate (Cat# [LY419814]) using anti-DDK antibody (Cat# [TA50011-100]). Left: Cell lysates from untransfected HEK293T cells; Right: Cell lysates from HEK293T cells transfected with [RC218939] using transfection reagent MegaTran 2.0 (Cat# [TT210002]).