

Product datasheet for **RC202894**

FOXO3 (NM_201559) Human Tagged ORF Clone

Product data:

Product Type:	Expression Plasmids
Product Name:	FOXO3 (NM_201559) Human Tagged ORF Clone
Tag:	Myc-DDK
Symbol:	FOXO3
Synonyms:	AF6q21; FKHRL1; FKHRL1P2; FOXO2; FOXO3A
Mammalian Cell Selection:	Neomycin
Vector:	pCMV6-Entry (PS100001)
E. coli Selection:	Kanamycin (25 ug/mL)



[View online »](#)

ORF Nucleotide
Sequence:

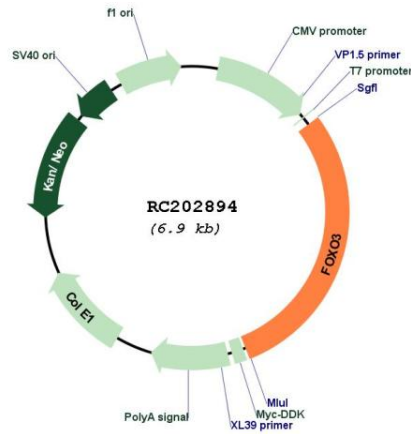
>RC202894 representing NM_201559
Red=Cloning site Blue=ORF Green=Tags(s)

TTTTGTAATACGACTCACTATAGGGCGGCCGGGAATTCGTCGACTGGATCCGGTACCGAGGAGATCTGCC
GCC**CGGATCGCC**

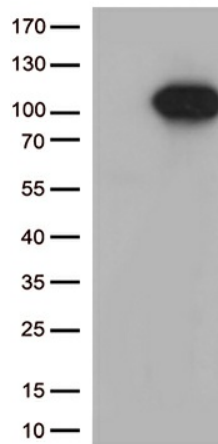
ATGGCAGAGGCACCGGCTCCCCGGCCCGCTCTCTCCGCTCGAAGTGGAGCTGGACCCGGAGTTTCGAGC
CCCAGAGCCGTCCGCGATCCTGTACGTGGCCCTGCAAAGGCCGGAGCTCCAAGCGAGCCCTGCCAAGCC
CTCGGGGAGACGGCCGCGACTCCATGATCCCCGAGGAGGAGGACGATGAAGACGACGAGGACGGCGGG
GGACGGGCGGCTCGGCCATGGCGATCGCGGGCGGGGAGCGGCACGCTGGGCTCCGGGCTGCTCC
TTGAGGACTCGGCCCGGTGCTGGCACCCGGAGGGCAAGACCCCGGGTCTGGCCAGCCACCGGGCGGG
CGGGCTGAGCGGGGTACACAGGCGCTGCTGCAGCCTCAGCAACCGCTGCCACCGCCGACGGGGGGCG
GCTGGGGCTCCGGCAGCCGAGGAAATGTTTCGTCGCGGGGAACGCCTGGGAAACCTGTCTACGCGG
ACCTGATCACCCGCGCCATCGAGAGCTCCCGGACAAACGGCTCACTCTGTCCAGATCTACGAGTGGAT
GGTGCCTTGCCTACTTCAAGGATAAGGGCGACAGCAACAGCTCTGCCGGTGGAAAGAACTCCATC
CGGCACAACCTGTCACTGATAGTCGATTATGCGGGTCCAGAATGAGGGAACTGGCAAGAGCTCTTGGT
GGATCATCAACCCTGATGGGGGAAGAGCGGAAAAGCCCCCGGGCGGGCTGTCTCCATGGACAATAG
CAACAAGTATACCAAGAGCCGTGGCCGCGCAGCCAAGAAGAAGGCAGCCCTGCAGACAGCCCCGAATCA
GCTGACGACAGTCCCTCCAGCTCTCCAAGTGGCTGGCAGCCCCACGTCACGCAGCAGTGTAGCTGG
ATGCGTGGACGGACTTCCGTTACGCACCAATTCTAACGCCAGCACAGTCACTGGCCGCCTGTGCCCCAT
CATGGCAAGCACAGATTGGATGAAGTCCAGGACGATGATGCGCCTCTCTCGCCATGCTCTACAGCAGC
TCAGCCAGCCTGTACCTTCAGTAAGCAAGCCGTGCACGGTGGAACTGCCACGGCTGACTGATATGGCAG
GCACCATGAATCTGAATGATGGGCTGACTGAAAACCTCATGGACGACCTGCTGGATAACATCACGCTCCC
GCCATCCAGCCATCGCCCACTGGGGGACTCATGCAGCGGAGCTTAGCTTCCCGTATACCAAGGGC
TCGGGCTGGGCTCCCAACCAGCTCCTTAAACAGCACGGTGTTCGGACCTTCATCTGAACTCCCTAC
GCCAGTCTCCATGCAGACCATCCAAGAGAACAAGCCAGCTACCTTCTCTTCCATGTCACACTATGGTAA
CCAGACACTCCAGGACCTGCTCACTTCGGACTCACTTAGCCACAGCGATGTATGATGACACAGTCGGAC
CCCTTGATGTCTCAGGCCAGCACCGCTGTGTCTGCCAGAATTCCCGCCGGAACGTGATGCTTCGCAATG
ATCCGATGATGTCCTTTGCTGCCAGCCTAACCCAGGGAAGTTGGTCAATCAGAACTGTCCACCACCA
GCACCAAAACCAGGGCGCTTTGGTGGCAGCCGTGCCTTGTGCAATTCTGTGAGCAACATGGGCTTGAGT
GAGTCCAGCAGCCTTGGGTCAGCCAAACACCAGCAGCAGTCTCCTGTGAGCCAGTCTATGCAAACCTCT
CGGACTCTCTCAGGCTCCTCCTTGTACTCAACTAGTGCAAACCTGCCGTCATGGGCCATGAGAAGTT
CCCCAGGACTTGACCTGGACATGTTCAATGGGAGCTTGGAAATGTGACATGGAGTCCATTATCCGTAGT
GAACTCATGGATGCTGATGGGTTGGATTTAACTTTGATTCCCTCATCTCCACACAGAATGTTGTTGGTT
TGAACGTGGGAACTTCACTGGTGTAAAGCAGGCTCATCTCAGAGCTGGGTGCCAGGC

ACGCGTACGCGGGCCGCTCGAGCAGAACTCATCTCAGAAGAGGATCTGGCAGCAAATGATATCCTGGATT
ACAAGGATGACGACGATAAGGTTTAA

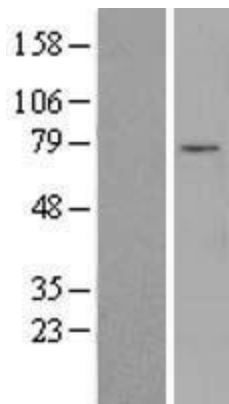
Reconstitution Method:	<ol style="list-style-type: none">1. Centrifuge at 5,000xg for 5min.2. Carefully open the tube and add 100ul of sterile water to dissolve the DNA.3. Close the tube and incubate for 10 minutes at room temperature.4. Briefly vortex the tube and then do a quick spin (less than 5000xg) to concentrate the liquid at the bottom.5. Store the suspended plasmid at -20°C. The DNA is stable for at least one year from date of shipping when stored at -20°C.
Note:	Plasmids are not sterile. For experiments where strict sterility is required, filtration with 0.22um filter is required.
RefSeq:	NM_201559.3
RefSeq Size:	3311 bp
RefSeq ORF:	2022 bp
Locus ID:	2309
UniProt ID:	O43524
Cytogenetics:	6q21
Protein Families:	Druggable Genome, Transcription Factors
Protein Pathways:	Chemokine signaling pathway, Endometrial cancer, Neurotrophin signaling pathway, Non-small cell lung cancer
MW:	71.1 kDa
Gene Summary:	This gene belongs to the forkhead family of transcription factors which are characterized by a distinct forkhead domain. This gene likely functions as a trigger for apoptosis through expression of genes necessary for cell death. Translocation of this gene with the MLL gene is associated with secondary acute leukemia. Alternatively spliced transcript variants encoding the same protein have been observed. [provided by RefSeq, Jul 2008]

Product images:


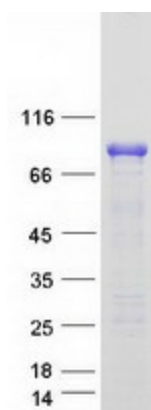
Circular map for RC202894



HEK293T cells were transfected with the pCMV6-ENTRY control (Cat# [PS100001], Left lane) or pCMV6-ENTRY FOXO3 (Cat# RC202894, Right lane) cDNA for 48 hrs and lysed. Equivalent amounts of cell lysates (5 ug per lane) were separated by SDS-PAGE and immunoblotted with anti-FOXO3 (Cat# [TA809449])(1:500).



Western blot validation of overexpression lysate (Cat# [LY400566]) using anti-DDK antibody (Cat# [TA50011-100]). Left: Cell lysates from untransfected HEK293T cells; Right: Cell lysates from HEK293T cells transfected with [RC209846] using transfection reagent MegaTran 2.0 (Cat# [TT210002]).



Coomassie blue staining of purified FOXO3 protein (Cat# [TP302894]). The protein was produced from HEK293T cells transfected with FOXO3 cDNA clone (Cat# RC202894) using MegaTran 2.0 (Cat# [TT210002]).