

## Product datasheet for **RC202887**

### **RAB3B (NM\_002867) Human Tagged ORF Clone**

#### Product data:

**Product Type:** Expression Plasmids  
**Product Name:** RAB3B (NM\_002867) Human Tagged ORF Clone  
**Tag:** Myc-DDK  
**Symbol:** RAB3B  
**Mammalian Cell Selection:** Neomycin  
**Vector:** pCMV6-Entry (PS100001)  
**E. coli Selection:** Kanamycin (25 ug/mL)  
**ORF Nucleotide Sequence:** >RC202887 representing NM\_002867  
 Red=Cloning site Blue=ORF Green=Tags(s)

TTTTGTAATACGACTCACTATAGGGCGGCCGGGAATTCGTCGACTGGATCCGGTACCGAGGAGATCTGCC  
 GCC**CGATCGCC**

ATGGCTTCAGTGACAGATGGTAAAACGGAGTCAAAGATGCCTCTGACCAGAATTTGACTACATGTTTA  
 AACTGCTTATCATTGGCAACAGCAGTGTGGCAAGACCTCCTTCCCTTTCCGCTATGCTGATGACACGTT  
 CACCCAGCCTTCGTTAGCACCGTGGGCATCGACTTCAAGGTGAAGACAGTCTACCGTCACGAGAAGCGG  
 GTGAAACTGCAGATCTGGACACAGCTGGGCAGGAGCGGTACCGGACCATCACAACAGCCTATTACCGTG  
 GGGCCATGGGCTTCATTCTGATGTATGACATCACCAATGAAGAGTCCTTCAATGCTGCCAAGACTGGGC  
 TACTCAGATCAAGACCTACTCCTGGGACAATGCACAAGTTATTCTGGTGGGAACAAGTGTGACATGGAG  
 GAAGAGAGGGTTGTTCCCACTGAGAAGGGCCAGCTCCTTGCAGAGCAGCTTGGGTTTGATTTCTTTGAAG  
 CCAGTGCAAAGGAGAACATCAGTGTAAAGCAGGCCTTTGAGCGCCTGGTGGATGCCATTTGTGACAAGAT  
 GTCTGATTCGCTGGACACAGACCCGTCGATGCTGGGCTCCTCCAAGAACACGCGTCTCTCGGACACCCCA  
 CCGCTGCTGCAGCAGAACTGCTCATGC

AG**CGGACCG**ACGCGTACGCGGCCGCTCGAGCAGAAACTCATCTCAGAAGAGGATCTGGCAGCAAATGATATCC  
 TGGATTACAAGGATGACGACGATAAGGTTTAA

**Protein Sequence:** >RC202887 representing NM\_002867  
 Red=Cloning site Green=Tags(s)

MASVTDGKTGVKDasDQNFdYMFKLLIIGNSSVGKTSFLFRYADDTFTPAFVSTVGIDFKVKTVYRHEKR  
 VKLQIWDTAGQERYRTITTAYYRGAMGFILMYDITNEESFNAVQDWATQIKTYSWDNAQVILVGNKCDME  
 EERVVPTEKGQLLAEQLGFDFFEASAKENISVRQAFERLVDAICDKMSDSLDTDPSMLGSSKNTRLSDTP  
 PLLQQNCSC

**SGP**TRRRLEQKLISEEDLAANDILDYKDDDDKV

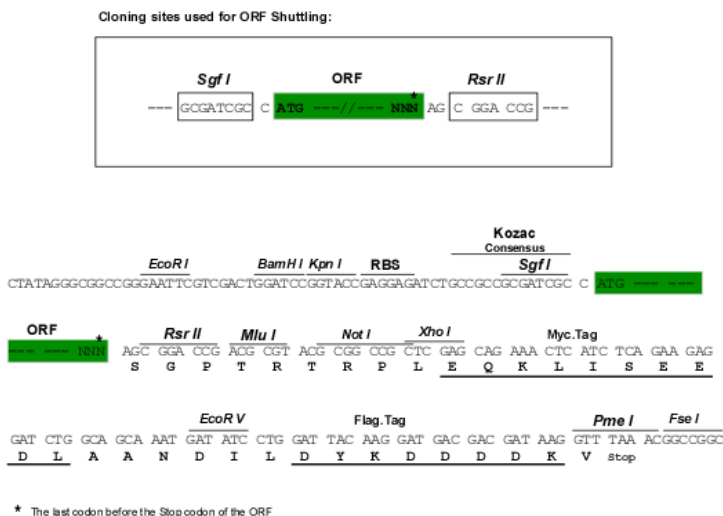


[View online »](#)

Chromatograms: [https://cdn.origene.com/chromatograms/ja1597\\_d08.zip](https://cdn.origene.com/chromatograms/ja1597_d08.zip)

Restriction Sites: SgfI-RsrII

Cloning Scheme:



ACCN: NM\_002867

ORF Size: 657 bp

OTI Disclaimer: The molecular sequence of this clone aligns with the gene accession number as a point of reference only. However, individual transcript sequences of the same gene can differ through naturally occurring variations (e.g. polymorphisms), each with its own valid existence. This clone is substantially in agreement with the reference, but a complete review of all prevailing variants is recommended prior to use. [More info](#)

OTI Annotation: This clone was engineered to express the complete ORF with an expression tag. Expression varies depending on the nature of the gene.

Components: The ORF clone is ion-exchange column purified and shipped in a 2D barcoded Matrix tube containing 10ug of transfection-ready, dried plasmid DNA (reconstitute with 100 ul of water).

Reconstitution Method:

1. Centrifuge at 5,000xg for 5min.
2. Carefully open the tube and add 100ul of sterile water to dissolve the DNA.
3. Close the tube and incubate for 10 minutes at room temperature.
4. Briefly vortex the tube and then do a quick spin (less than 5000xg) to concentrate the liquid at the bottom.
5. Store the suspended plasmid at -20°C. The DNA is stable for at least one year from date of shipping when stored at -20°C.

RefSeq: [NM\\_002867.4](#)

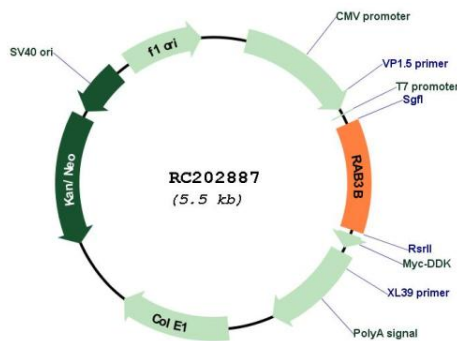
RefSeq Size: 1565 bp

RefSeq ORF: 660 bp

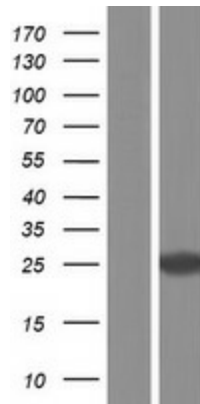
Locus ID: 5865

**UniProt ID:** [P20337](#)  
**Cytogenetics:** 1p32.3  
**Domains:** ras, RAN, RAS, RHO, RAB  
**Protein Families:** Druggable Genome  
**Protein Pathways:** Tight junction  
**MW:** 24.6 kDa  
**Gene Summary:** Protein transport. Probably involved in vesicular traffic (By similarity).[UniProtKB/Swiss-Prot Function]

**Product images:**



Circular map for RC202887



Western blot validation of overexpression lysate (Cat# [LY419060]) using anti-DDK antibody (Cat# [TA50011-100]). Left: Cell lysates from untransfected HEK293T cells; Right: Cell lysates from HEK293T cells transfected with RC202887 using transfection reagent MegaTran 2.0 (Cat# [TT210002]).