

Product datasheet for **RC202884**

TSSC3 (PHLDA2) (NM_003311) Human Tagged ORF Clone

Product data:

Product Type: Expression Plasmids
Product Name: TSSC3 (PHLDA2) (NM_003311) Human Tagged ORF Clone
Tag: Myc-DDK
Symbol: TSSC3
Synonyms: BRW1C; BWR1C; HLDA2; IPL; TSSC3
Mammalian Cell Selection: Neomycin
Vector: pCMV6-Entry (PS100001)
E. coli Selection: Kanamycin (25 ug/mL)
ORF Nucleotide Sequence: >RC202884 ORF sequence
 Red=Cloning site Blue=ORF Green=Tags(s)

TTTTGTAATACGACTCACTATAGGGCGGCCGGAATTCGTCGACTGGATCCGGTACCGAGGAGATCTGCC
 GCC**CGATCGCC**

ATGAAATCCCCGACGAGGTGCTACGCGAGGGCGAGTTGGAGAAGCGCAGCGACAGCCTCTTCCAGCTAT
 GGAAGAAGAAGCGCGGGTGCTCACCTCCGACCGCCTGAGCCTGTTCCCGCCAGCCCCGCGCGCGCC
 CAAGGAGCTGCGCTTCCACTCCATCCTCAAGGTGGAAGTGGAGCGCAGCGGCAAGTACGTGTACTTC
 ACCATCGTCACCACCGACCACAAGGAGATCGACTTCGCTGCGCGGGCGAGAGCTGCTGGAACGCGGCCA
 TCGCGCTGGCGCTCATCGATTTCCAGAACCGCCGCGCCTGCAGGACTTTCGAGCCGCCAGGAACGCAC
 CGCACCCGCCGACCCGCGAGGACGCGGTGGCTGCCGCGCGCGCGCACCTCCGAGCCCTCGGAGCCC
 TCCAGGCCATCCCCGAGCCAAACCCGCACGCCA

ACGCGTACGCGGCCGCTCGAGCAGAACTCATCTCAGAAGAGGATCTGGCAGCAAATGATATCCTGGATT
 ACAAGGATGACGACGATAAGGTTTAA

Protein Sequence: >RC202884 protein sequence
 Red=Cloning site Green=Tags(s)

MKSPDEVLRERGELEKRSDSLFQLWKKRQVLTSDRLSLFPASPRARPKELELRFHSLKVDVERTGKYVYF
 TIVTTDHKEIDFRGAGESCWNAALALIDFQNRRLQDFRSRQERTAPAAPDAVAAPSESEP
 SRPSPQPKRTP

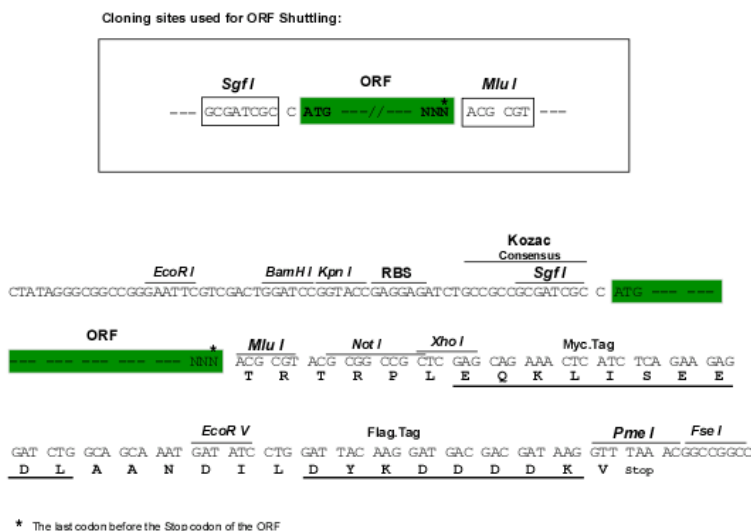
TRTRPLEQKLISEEDLAANDILDYKDDDDKV

Chromatograms: https://cdn.origene.com/chromatograms/mk6412_a10.zip


[View online »](#)

Restriction Sites: Sgfl-MluI

Cloning Scheme:



ACCN: NM_003311

ORF Size: 456 bp

OTI Disclaimer: The molecular sequence of this clone aligns with the gene accession number as a point of reference only. However, individual transcript sequences of the same gene can differ through naturally occurring variations (e.g. polymorphisms), each with its own valid existence. This clone is substantially in agreement with the reference, but a complete review of all prevailing variants is recommended prior to use. [More info](#)

OTI Annotation: This clone was engineered to express the complete ORF with an expression tag. Expression varies depending on the nature of the gene.

Components: The ORF clone is ion-exchange column purified and shipped in a 2D barcoded Matrix tube containing 10ug of transfection-ready, dried plasmid DNA (reconstitute with 100 ul of water).

Reconstitution Method:

1. Centrifuge at 5,000xg for 5min.
2. Carefully open the tube and add 100ul of sterile water to dissolve the DNA.
3. Close the tube and incubate for 10 minutes at room temperature.
4. Briefly vortex the tube and then do a quick spin (less than 5000xg) to concentrate the liquid at the bottom.
5. Store the suspended plasmid at -20°C. The DNA is stable for at least one year from date of shipping when stored at -20°C.

Note: Plasmids are not sterile. For experiments where strict sterility is required, filtration with 0.22um filter is required.

RefSeq: [NM_003311.4](#)

RefSeq Size: 937 bp

RefSeq ORF: 459 bp

Locus ID: 7262
UniProt ID: [Q53GA4](#)

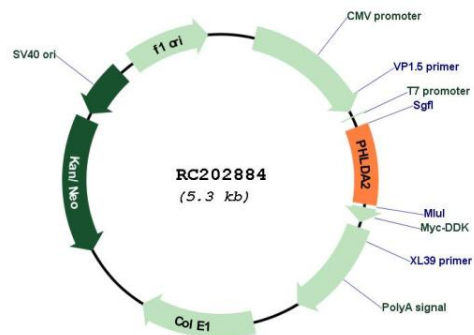
Cytogenetics: 11p15.4

Protein Families: Druggable Genome

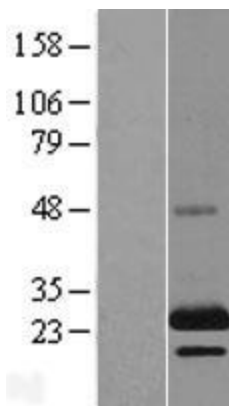
MW: 17.1 kDa

Gene Summary: This gene is located in a cluster of imprinted genes on chromosome 11p15.5, which is considered to be an important tumor suppressor gene region. Alterations in this region may be associated with the Beckwith-Wiedemann syndrome, Wilms tumor, rhabdomyosarcoma, adrenocortical carcinoma, and lung, ovarian, and breast cancer. This gene has been shown to be imprinted, with preferential expression from the maternal allele in placenta and liver. [provided by RefSeq, Oct 2010]

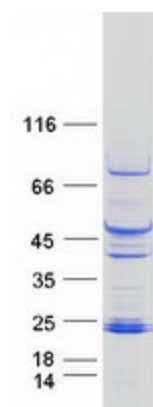
Product images:



Circular map for RC202884



Western blot validation of overexpression lysate (Cat# [LY418773]) using anti-DDK antibody (Cat# [TA50011-100]). Left: Cell lysates from untransfected HEK293T cells; Right: Cell lysates from HEK293T cells transfected with RC202884 using transfection reagent MegaTran 2.0 (Cat# [TT210002]).



Coomassie blue staining of purified PHLDA2 protein (Cat# [TP302884]). The protein was produced from HEK293T cells transfected with PHLDA2 cDNA clone (Cat# RC202884) using MegaTran 2.0 (Cat# [TT210002]).