

Product datasheet for **RC202883**

Ube1L (UBA7) (NM_003335) Human Tagged ORF Clone

Product data:

Product Type:	Expression Plasmids
Product Name:	Ube1L (UBA7) (NM_003335) Human Tagged ORF Clone
Tag:	Myc-DDK
Symbol:	Ube1L
Synonyms:	D8; UBA1B; UBE1L; UBE2
Mammalian Cell Selection:	Neomycin
Vector:	pCMV6-Entry (PS100001)
E. coli Selection:	Kanamycin (25 ug/mL)
ORF Nucleotide Sequence:	>RC202883 ORF sequence Red=Cloning site Blue=ORF Green=Tags(s)

TTTTGTAATACGACTCACTATAGGGCGGCCGGAATTCGTCGACTGGATCCGGTACCGAGGAGATCTGCC
GCC**CGATCGCC**

ATGGATGCCCTGGACGCTTCGAAGCTACTGGATGAGGAGCTGTATTCAAGACAGCTGTATGTGCTGGGCT
CACCTGCCATGCAGAGGATTCAGGGAGCCAGGGTCTGGTGTGAGGCTGCAGGGCTGGGGCCGAGGT
GGCCAAGAAGTGGTTCTGATGGGTGTGGCAGCCTCACTCTGCATGATCCCCACCCACCTGCTGGTCC
GACCTGGCTGCCAGTTTCTCCTCTCAGAGCAGGACTTGAAAGGAGCAGAGCCGAGGCCTCAAGAGC
TCTTGGCTCAGCTCAACAGAGCTGTCCAGTTCGTGTCACACGGGTGACATCACTGAGGACCTGCTGTT
GGACTTCCAGGTGGTGGTCTGACTGCTGCAAAGCTGGAGGAGCAGCTGAAGGTGGGCACCTTGTGTCAT
AAGCATGGAGTTTCTTCTGGCGGCTGACACCCGGGCCTCGTGGGGCAGTTGTTCTGTGACTTTGGTG
AGGACTTCACTGTGACAGGACCCACAGAGGCAGAACCCCTGACAGCTGCCATCCAGCACATCTCCAGGG
CTCCCCTGGCATTCTCACTCTGAGGAAAGGGCCAATACCCACTACTTCCGTGATGGAGACTTGGTGACT
TTCTCGGGAATTGAGGGAATGTTGAGCTCAACGACTGTGATCCCCGGTCTATCCACGTGCGGGAGGATG
GGTCCCTGGAGATTGGAGACACAACAATTTCTCTCGTACTTGGTGGGCTATCACTGAAGTCAA
GAGACCAAGACTGTGAGACATAAGTCCCTGGACACAGCCCTGCTCCAGCCCCATGTGGTGGCCAGAG
TCCCAGGAAGTTCACCATGCCACTGCCCTGCATCAGGCTTCTGTGCACTGCACAAGTCCAGCACCTCC
ATGGCCGGCCACCCAGCCCTGGGATCCTGTTGATGCAGAGACTGTGGTGGCCTGGCCCGGACCTGGA
ACCACTGAAGCGGACAGAGGAAGAGCCACTGGAAGAGCCACTGGATGAGGCCCTAGTGCGGACAGTCCGC
CTAAGCAGTGCAGGTGCTTGGAGCCCTATGGTGGCCATGCTGGTGCAGTAGCTGCCAGGAAGTGTGA
AGGCAATCTCCAGGAAGTTCATGCCTCTGGACCAGTGGCTTTACTTTGATGCCCTCGATTGCTTCCGGA
AGATGGGAGCTCCTCCAGTCTGAGGACTGTGCCCTGAGAGGCAGCCGCTATGATGGCAAATTGCA
GTGTTTGGGGCTGGTTTTAGGAGAACTGAGACGCCAGCACTACCTCCTGGTGGGCGCTGGTGCATTG
GTTGTGAGCTGCTCAAAGTCTTTCCTAGTGGGACTGGGGCCGGGAACAGCGGGGCTTACTGTTGT
TGACATGGACCACATAGAGCGCTCCAATCTCAGCCGTGAGTTCCTTTCAGTCCAGGACGTTGGTAGA



[View online >](#)

```

CCCAAGGCAGAGGTGGCTGCAGCAGCTGCCCGGGCCTGAACCCAGACTTACAGGTGATCCCGCTCACCT
ACCCACTGGATCCCACCACAGAGCACATCTATGGGGATAACTTTTTCTCCCGTGTGGATGGTGTGGCTGC
TGCCCTGGACAGTTTCCAGGCCCGGCGCTATGTGGCTGCTCGTTGCACCCACTATCTGAAGCCACTGCTG
GAGGCAGGCACATCGGGCACCTGGGGCAGTGTACAGTATTATGCCACATGTGACTGAGGCCTACAGAG
CCCCTGCCTCAGCTGCAGCTTCTGAGGATGCCCCCTACCCTGTCTGTACCGTGCGGTACTTCCCTAGCAC
AGCCGAGCACACCCTGCAGTGGGCCCGCATGAGTTTGAAGAACTCTCCGACTGTCTGCAGAGACCATC
AACCACCACCAACAGGCACACACTTCCCTGGCAGACATGGATGAGCCACAGACACTCACCTTACTGAAGC
CAGTGCTTGGGGTCTGAGAGTGCCTCCACAGAAGTGGCAAGACTGTGTGGCGTGGGCTCTTGGCCACTG
GAAACTCTGCTTTCATTATGGCATCAAACAGCTGCTGAGGCACTTCCACCTAATAAAGTCTTGAGGAT
GAACTCCCTTCTGGTACAGTCCCAAACAGTGTCCCAGCCCTTGGAGTTTGACACCAACCAAGACACAC
ACCTCCTCTACGTACTGGCAGCTGCCAACCTGTATGCCAGATGCATGGGCTGCCTGGCTCACAGGACTG
GACTGCACTCAGGGAGCTGCTGAAGCTGCTGCCACAGCTGACCCCAACAGATGGCCCCATCTTTGCT
AGTAATCTAGAGTGGCTTCGGCTTCTGCTGAGTTTGGCCCTGAGCAGCAGAAGGAACTGAACAAAGCCC
TGGAACTCTGGAGTGTGGGCCCTCCCTGAAGCCTCTGATGTTTGAAGGATGATGACAGCAACTTCCA
TGTGGACTTTGTGTAGCGGCAGCTAGCCTGAGATGTCAGAACTACGGGATTCCACCGGTCAACCGTGCC
CAGAGCAAGCAATTGTGGGCCAGATTATCCAGCCATTGCCACCACTACAGCAGCTGTGGCAGGCCTGT
TGGCCTGGAGCTGTATAAGGTGGTGTGAGTGGGCCACGGCCTCGTAGTGCCTTTCGCCACAGCTACCTACA
TCTGGCTGAAAACCTCATCCGCTATATGCCTTTTGGCCAGCCATCCAGACGTTCCATCACCTGAAG
TGGACCTCTTGGGACCGTCTGAAGGTACCAGCTGGGCAGCCTGAGAGGACCCTGGAGTCGCTGCTGGCTC
ATCTTCAGGAGCAGCAGGGTTGAGGGTGAAGTATCCTGCTGCACGGCTCAGCCCTGCTCTATGCGGCCGG
ATGGTCACCTGAAAAGCAGGCCAGCACCTGCCCTCAGGGTACAGAACTGGTTACAGCAGCTGACAGGC
CAGGCACCTGCTCTGGGCAGCGGTGTGGTGTAGAGCTGAGCTGTGAGGGTGACGACGAGGACACTG
CCTTCCACCTCTGCACTATGAGCTG
    
```

ACGCGTACGCGGCCGCTCGAGCAGAACTCATCTCAGAAGAGGATCTGGCAGCAAATGATATCCTGGATT
ACAAGGATGACGACGATAAGGTTTAA

Protein Sequence:

>RC202883 protein sequence
Red=Cloning site Green=Tags(s)

```

MDALDASKLLDEELYSRQLYVLGSPAMQRIQGARVLSVGLQGLGAEVAKNLVLMGVGSLTLHDPHPTCWS
DLAAQFLLSEQDLERSRAEASQELLAQLNRAVQVVVHTGDI TEDLLLDFQVVVL TAAKLEEQLKVGTLCH
KHGVCFLAADTRGLVGQLFCDFGEDFTVQDPTEAEPLTAAIQHISQSGSPGILTLRKGANHYFRDGLVT
FSGIEGMVELNDCDPRS IHVREDGSLEIGDTTTF SRYLRGGAITEVKRPKTVRHKSLDALLQPHVVAQS
SQEVHHAHCLHQAF CALHKFQHLHGRPPQPWDPVDAETVVGLARDLEPLKRTEEEPLEEPLDEALVRTVA
LSSAGVLSPMVAMLGAVAAQEV LKAI SRKFMPLDQWL YFDALDCLPEDGELL P SPEDCALRGSRYDQIA
VFGAGFQEKLRQHYLL VGAGAI GCELLKVFAL VGLGAGNSGGL TVVMDHIERSNL SRQFLFRSQDVGR
PKAEVAAAAARGLNPD LQVIPL TYPLDPTTEHI YGDNFFSRVDGVAALDSFQARRYVAARCTHYLKPLL
EAGTSGTWGSATVFM PHVTEAYRAPASAAAS EDAPYPVCTVRYFPSTAEHTLQWARHEFEELFRLSAETI
NHHQQAHTSLADMDEPQTL TLLKPV LGVLRV RPNWQDCVAWALGHWKL CFHYGIKQLLRHFPPNKVLED
GTPFWSGPKQCPQPLEFD TNQDTHLL YVLAANL YAQMHLPGSQDWTALRELLKLLPQDPQQMAPIFA
SNLELASASA EFGPEQQKELNKALEVWSVGPPLKPLMFEKDDSNFHVDFVVAASLRQNYGIPPV NRA
QSKRIVGQIIPAIATTTAAVAGLLGLEL YKVVSGPRPRSAFRHSYLHLAENYL IRYMPFAPAIQTFHHLK
WTSWDRLKVPAGQPERTLESLLAHLQE QHGLRVRILLHGSALL YAAGWSPEKQAQHLPLRVTEL VQLTG
QAPAPGQRV LLELSCEGDEDETAFFPLHYEL
    
```

TRTRPLEQKLI SEEDLAANDILDYKDDDDKV

Chromatograms:

https://cdn.origene.com/chromatograms/mk6156_d09.zip

Restriction Sites:

Sgfl-Mlul

Cloning Scheme:


ACCN: NM_003335

ORF Size: 3036 bp

OTI Disclaimer: The molecular sequence of this clone aligns with the gene accession number as a point of reference only. However, individual transcript sequences of the same gene can differ through naturally occurring variations (e.g. polymorphisms), each with its own valid existence. This clone is substantially in agreement with the reference, but a complete review of all prevailing variants is recommended prior to use. [More info](#)

OTI Annotation: This clone was engineered to express the complete ORF with an expression tag. Expression varies depending on the nature of the gene.

Components: The ORF clone is ion-exchange column purified and shipped in a 2D barcoded Matrix tube containing 10ug of transfection-ready, dried plasmid DNA (reconstitute with 100 ul of water).

Reconstitution Method:

1. Centrifuge at 5,000xg for 5min.
2. Carefully open the tube and add 100ul of sterile water to dissolve the DNA.
3. Close the tube and incubate for 10 minutes at room temperature.
4. Briefly vortex the tube and then do a quick spin (less than 5000xg) to concentrate the liquid at the bottom.
5. Store the suspended plasmid at -20°C. The DNA is stable for at least one year from date of shipping when stored at -20°C.

Note: Plasmids are not sterile. For experiments where strict sterility is required, filtration with 0.22um filter is required.

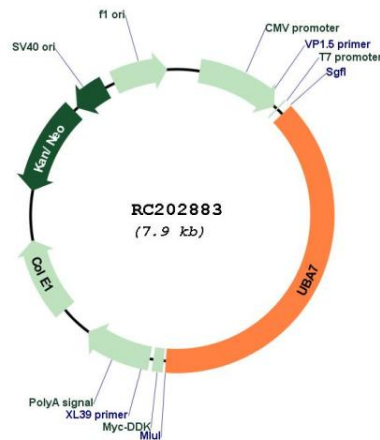
RefSeq: [NM_003335.3](#)

RefSeq Size: 3330 bp

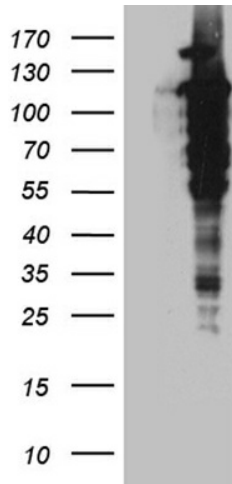
RefSeq ORF:	3039 bp
Locus ID:	7318
UniProt ID:	P41226
Cytogenetics:	3p21.31
Domains:	UBACT, ThiF
Protein Families:	Druggable Genome
Protein Pathways:	Parkinson's disease, Ubiquitin mediated proteolysis
MW:	111.7 kDa

Gene Summary: The modification of proteins with ubiquitin is an important cellular mechanism for targeting abnormal or short-lived proteins for degradation. Ubiquitination involves at least three classes of enzymes: ubiquitin-activating enzymes, or E1s, ubiquitin-conjugating enzymes, or E2s, and ubiquitin-protein ligases, or E3s. This gene encodes a member of the E1 ubiquitin-activating enzyme family. The encoded enzyme is a retinoid target that triggers promyelocytic leukemia (PML)/retinoic acid receptor alpha (RARalpha) degradation and apoptosis in acute promyelocytic leukemia, where it is involved in the conjugation of the ubiquitin-like interferon-stimulated gene 15 protein. [provided by RefSeq, Jul 2008]

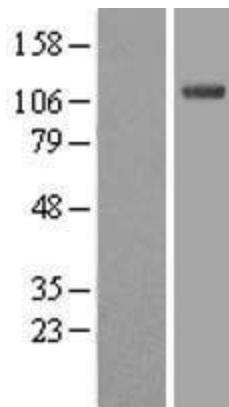
Product images:



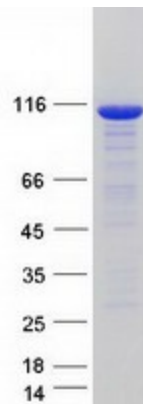
Circular map for RC202883



HEK293T cells were transfected with the pCMV6-ENTRY control (Cat# [PS100001], Left lane) or pCMV6-ENTRY UBA7 (Cat# RC202883, Right lane) cDNA for 48 hrs and lysed. Equivalent amounts of cell lysates (5 ug per lane) were separated by SDS-PAGE and immunoblotted with anti-UBA7 (Cat# [TA811855]). Positive lysates [LY418753] (100ug) and [LC418753] (20ug) can be purchased separately from OriGene.



Western blot validation of overexpression lysate (Cat# [LY418753]) using anti-DDK antibody (Cat# [TA50011-100]). Left: Cell lysates from untransfected HEK293T cells; Right: Cell lysates from HEK293T cells transfected with RC202883 using transfection reagent MegaTran 2.0 (Cat# [TT210002]).



Coomassie blue staining of purified UBA7 protein (Cat# [TP302883]). The protein was produced from HEK293T cells transfected with UBA7 cDNA clone (Cat# RC202883) using MegaTran 2.0 (Cat# [TT210002]).