

Product datasheet for **RC202870**

TSSC4 (NM_005706) Human Tagged ORF Clone

Product data:

Product Type:	Expression Plasmids
Product Name:	TSSC4 (NM_005706) Human Tagged ORF Clone
Tag:	Myc-DDK
Symbol:	TSSC4
Mammalian Cell Selection:	Neomycin
Vector:	pCMV6-Entry (PS100001)
E. coli Selection:	Kanamycin (25 ug/mL)
ORF Nucleotide Sequence:	>RC202870 ORF sequence Red=Cloning site Blue=ORF Green=Tags(s)

TTTTGTAATACGACTCACTATAGGGCGGCCGGAATTCGTCGACTGGATCCGGTACCGAGGAGATCTGCCGCC**CGATCGCC**

ATGGCTGAGGCAGGAACAGGTGAGCCGTCCCCAGCGTGGAGGGCGAACACGGGACGGAGTATGACACGC
TGCCTCCGACACAGTCTCCCTCAGTGACTCGGACTCTGACCTCAGCTTGCCCGTGGTGTGAAGTGA
AGCACTGTCCCGATGGGGCTGCCTGGGAGGAGGATTCAGGTCCTGATGAGCCGCCCTCACCCCGTCA
GGCCTCCTCCAGCCACGGTGCAGCCATTCATCTGAGAGGCATGAGCTCCACCTTCTCCAGCGCAGCC
GTGACATCTTTGACTGCCTGGAGGGGGCGGCCAGACGGGCTCCATCCTCTGTGGCCACACCAGCATGAG
TGACAACGGAGGCTTCAAGCGGCCCTAGCGCCCTCAGGCCGGTCTCCAGTGGAAGGCCTGGGCAGGGCC
CATCGGAGCCCTGCCTCACCAAGGGTGCCTCCGGTCCCCGACTACGTGGCACACCCCGAGCGCTGGACCA
AGTACAGCCTGGAAGATGTGACCGAGGTCAGCGAGCAGAGCAATCAGGCCACCGCCCTGGCCTTCTGGG
CTCCCAGAGCCTGGCTGCCCCACTGACTGCGTGTCTCCTTCAACCAGGATCCCTCCAGCTGTGGGGAG
GGGAGGGTCATCTTACCAAACAGTCCGAGGGGTGGAAGCCAGACACGAGAGGAAGAGGGTCTGGGGA
AGGTGGGAGAGCCAGGCAGGGGGCGCCTTGGGAATCCTGCCACAGACAGGGGCGAGGGCCCTGTGGAGCT
GGCCATCTGGCCGGGCCGGGAGCCAGAGGCTGAGGAGTGGGCAGCCCCATGGAGGCTGCAGGAG
GTGGAGGCACTGTCAAGGTCTGTCCACAGTGGGTCTGTGCCAGGCTCCCGCCGGTGAAACTGTTGGCT
TCCATGGCAGCAGGAAGCGGAGTCGAGACCACTCCGGAACAAGAGCAGCAGCCCCGAGGACCCAGGTGC
TGAGGTC

ACGCGTACGCGGCCGCTCGAGCAGAACTCATCTCAGAAGAGGATCTGGCAGCAAATGATATCCTGGATT
ACAAGGATGACGACGATAAGGTTTAA



Protein Sequence: >RC202870 protein sequence
Red=Cloning site Green=Tags(s)

MAEAGTGEPSPSVEGEHGTEYDTLPDSTVSLSDSDSLPGGAEVEALSPMGLPGEEDSGPDEPPSPPS
 GLLPATVQPFHLRGMSSTFQRSRDIFDCLEGAARRAPSSVAHTSMSDNGGFKRPLAPSGRSPVEGLGRA
 HRSPASPRVPPVPDYVAHPPERWTKYSLEDVTEVSEQSNQATALAFLGSQSLAAPTDCVSSFNQDPSSCGE
 GRVIFTKPVRGVEARHERKRVLGKVGEPGRGGLGNPATDRGEGPVELAHLAGPGSPAEAEWGPSHGGLQE
 VEALSGSVHSGSVPLPPVETVGFHGSRRSRDHFNRKSSSPEDPGAEV

TRTRPLEQKLISEEDLAANDILDYKDDDDKV

Chromatograms: https://cdn.origene.com/chromatograms/mk6579_d08.zip

Restriction Sites: SgfI-MluI

Cloning Scheme:

Cloning sites used for ORF Shuttling:



* The last codon before the Stop codon of the ORF

ACCN: NM_005706

ORF Size: 987 bp

OTI Disclaimer: The molecular sequence of this clone aligns with the gene accession number as a point of reference only. However, individual transcript sequences of the same gene can differ through naturally occurring variations (e.g. polymorphisms), each with its own valid existence. This clone is substantially in agreement with the reference, but a complete review of all prevailing variants is recommended prior to use. [More info](#)

OTI Annotation: This clone was engineered to express the complete ORF with an expression tag. Expression varies depending on the nature of the gene.

Components: The ORF clone is ion-exchange column purified and shipped in a 2D barcoded Matrix tube containing 10ug of transfection-ready, dried plasmid DNA (reconstitute with 100 ul of water).

Reconstitution Method:

1. Centrifuge at 5,000xg for 5min.
2. Carefully open the tube and add 100ul of sterile water to dissolve the DNA.
3. Close the tube and incubate for 10 minutes at room temperature.
4. Briefly vortex the tube and then do a quick spin (less than 5000xg) to concentrate the liquid at the bottom.
5. Store the suspended plasmid at -20°C. The DNA is stable for at least one year from date of shipping when stored at -20°C.

RefSeq: [NM_005706.4](#)

RefSeq Size: 1749 bp

RefSeq ORF: 990 bp

Locus ID: 10078

UniProt ID: [Q9Y5U2](#)

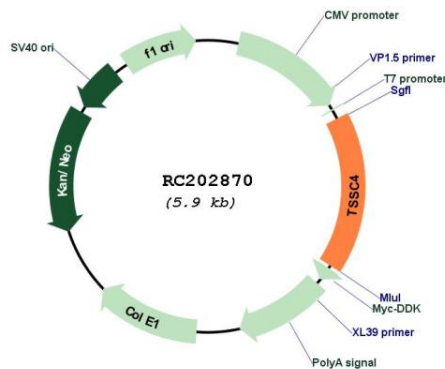
Cytogenetics: 11p15.5

Protein Families: Druggable Genome

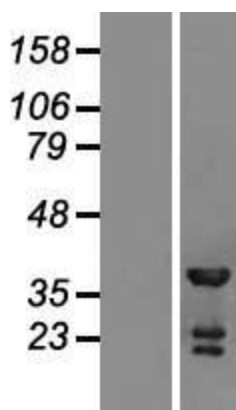
MW: 34.3 kDa

Gene Summary: This gene is one of several tumor-suppressing subtransferable fragments located in the imprinted gene domain of 11p15.5, an important tumor-suppressor gene region. Alterations in this region have been associated with the Beckwith-Wiedemann syndrome, Wilms tumor, rhabdomyosarcoma, adrenocortical carcinoma, and lung, ovarian, and breast cancer. This gene is located among several imprinted genes; however, this gene, as well as the pan-hematopoietic expression gene (PHEMX), escapes imprinting. This gene may play a role in malignancies and disease that involve this region. Several transcript variants encoding two different isoforms have been found for this gene. [provided by RefSeq, Jul 2014]

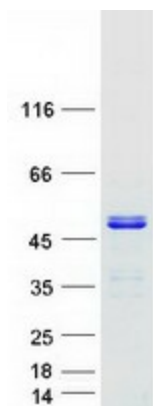
Product images:



Circular map for RC202870



Western blot validation of overexpression lysate (Cat# [LY417124]) using anti-DDK antibody (Cat# [TA50011-100]). Left: Cell lysates from untransfected HEK293T cells; Right: Cell lysates from HEK293T cells transfected with RC202870 using transfection reagent MegaTran 2.0 (Cat# [TT210002]).



Coomassie blue staining of purified TSSC4 protein (Cat# [TP302870]). The protein was produced from HEK293T cells transfected with TSSC4 cDNA clone (Cat# RC202870) using MegaTran 2.0 (Cat# [TT210002]).