

## Product datasheet for RC202869

### Nck (NCK1) (NM\_006153) Human Tagged ORF Clone

#### Product data:

Product Type:	Expression Plasmids
Product Name:	Nck (NCK1) (NM_006153) Human Tagged ORF Clone
Tag:	Myc-DDK
Symbol:	Nck
Synonyms:	NCK; nck-1; NCKalpha
Mammalian Cell Selection:	Neomycin
Vector:	pCMV6-Entry (PS100001)
E. coli Selection:	Kanamycin (25 ug/mL)
ORF Nucleotide Sequence:	>RC202869 ORF sequence Red=Cloning site Blue=ORF Green=Tags(s)

TTTTGTAATACGACTCACTATAGGGCGCCGGGAATTCGTCGACTGGATCCGGTACCGAGGAGATCTGCC  
GCC**CGATCGCC**

ATGGCAGAAGAAGTGGTGGTAGTAGCCAAATTTGATTATGTGGCCAACAAGAACAAGAGTTGGACATCA  
AGAAGAATGAGAGATTATGGCTTCTGGATGATTCTAAGTCCTGGTGGCGAGTTCGAAATCCATGAATAA  
AACAGGTTTTGTGCTTCTAACTATGTGGAAAGGAAAAACAGTGCTCGGAAAGCATCTATTGTGAAAAAC  
CTAAAGGATACCTTAGGCATTGAAAAGTAAAAGAAAACCTAGTGTGCCAGATTCTGCATCTCCTGCTG  
ATGATAGTTTTGTGACCCAGGGGAACGTCTCTATGACCTCAACATGCCCGCTTATGTGAAATTTAACTA  
CATGGCTGAGAGAGAGGATGAATTATCATTGATAAAGGGGACAAAGGTGATCGTCATGGAGAAATGCAGT  
GATGGGTGGTGGCGTGGTAGCTACAATGGACAAGTTGGATGGTCCCTTCAAACCTATGTAACGAAGAAG  
GTGACAGTCCCTTTGGGTGACCATGTGGTCTCTGTGAGAGAAATTAGCAGCAGTCGTCAATAACCTAAA  
TACTGGGCAAGTGTGATGTGGTACAGGCTCTTACCATTAGCTCATCTAATGATGAAGAACTTAAT  
TTCGAGAAAGGAGATGTAATGGATGTTATTGAAAACTGAAAATGACCCAGAGTGGTGGAAATGCAGGA  
AGATCAATGGTATGGTGGTCTAGTACCAAAAACTATGTTACCGTTATGCAGATAATCCATTAACCTTC  
AGGTTTGAACCATCACCTCCACAGTGTGATTACATTAGGCCCTCACTCACTGAAAAGTTTGCTGGCAAT  
CCTTGGTATTATGGCAAAGTACCAGGCATCAAGCAGAAATGGCATTAAATGAAAGAGGACATGAAGGGG  
ATTTCTCATTCTGATAGTGAATCTTCGCCAAATGATTTCTCAGTATCACTAAAAGCACAAAGGAAAAA  
CAAGCATTTTAAAGTCCAACTAAAAGAGACTGTCTACTGCATTGGGCAGCGTAAATTCAGCACCATGGAA  
GAACTTGTAGAACATTACAAAAGGCACCAATTTTACAAGTGAACAAGGAGAAAAATTATATCTTGTC  
AGCATTATCA

**ACGCGT**ACGCGGCCGCTCGAGCAGAACTCATCTCAGAAGAGGATCTGGCAGCAATGATATCCTGGATT  
ACAAGGATGACGACGATAAGGTTTAA



[View online >](#)

**Protein Sequence:** >RC202869 protein sequence  
 Red=Cloning site Green=Tags(s)

MAEEVVVAKFDYVAQQEQELDIIKKNERLWLLDDSKSWWRVRNSMNKTGFVPSNYVERKNSARKASIVKN  
 LKDTLGIGKVKRKPSPVDSASPADDSFVDPGERLYDLNMPAYVKFNMAEREDELSLIKGTKVIVMEKCS  
 DGWWRGSYNGQVGFPSNYVTEEGDSPLGDHVGSLSEKLAAVVNNLNTGQVLHVQALYPFSSSNDDELN  
 FEKGDVMDVIEKPENDPEWVKCRKINGMVGLVPKNYVTVMQNNPLTSGLEPSPQQCDYIRPSLTGKFAGN  
 PWYYGKVTRHQAEMALNERGHEGDFLIRDSESSPNDFSVSLKAQKKNKHFVQLKETVYICIGQRKFSME  
 ELVEHYKKAPIFTSEQGEKLYLVKHL

TRTRPLEQKLISEEDLAANDILDYKDDDDKV

**Chromatograms:** [https://cdn.origene.com/chromatograms/mk6152\\_h03.zip](https://cdn.origene.com/chromatograms/mk6152_h03.zip)

**Restriction Sites:** SgfI-MluI

**Cloning Scheme:**



\* The last codon before the Stop codon of the ORF

**ACCN:** NM\_006153

**ORF Size:** 1131 bp

**OTI Disclaimer:** The molecular sequence of this clone aligns with the gene accession number as a point of reference only. However, individual transcript sequences of the same gene can differ through naturally occurring variations (e.g. polymorphisms), each with its own valid existence. This clone is substantially in agreement with the reference, but a complete review of all prevailing variants is recommended prior to use. [More info](#)

**OTI Annotation:** This clone was engineered to express the complete ORF with an expression tag. Expression varies depending on the nature of the gene.

**Components:** The ORF clone is ion-exchange column purified and shipped in a 2D barcoded Matrix tube containing 10ug of transfection-ready, dried plasmid DNA (reconstitute with 100 ul of water).

**Reconstitution Method:**

1. Centrifuge at 5,000xg for 5min.
2. Carefully open the tube and add 100ul of sterile water to dissolve the DNA.
3. Close the tube and incubate for 10 minutes at room temperature.
4. Briefly vortex the tube and then do a quick spin (less than 5000xg) to concentrate the liquid at the bottom.
5. Store the suspended plasmid at -20°C. The DNA is stable for at least one year from date of shipping when stored at -20°C.

**RefSeq:** [NM\\_006153.6](#)

**RefSeq Size:** 4421 bp

**RefSeq ORF:** 1134 bp

**Locus ID:** 4690

**UniProt ID:** [P16333](#)

**Cytogenetics:** 3q22.3

**Domains:** SH2, SH3

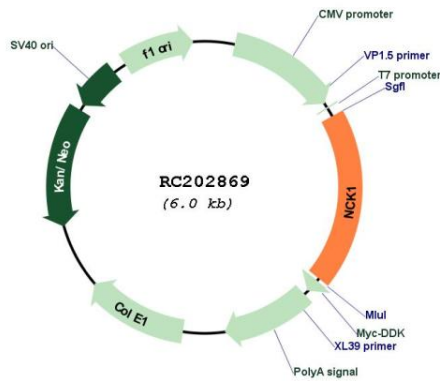
**Protein Families:** Druggable Genome

**Protein Pathways:** Axon guidance, ErbB signaling pathway, Pathogenic Escherichia coli infection, T cell receptor signaling pathway

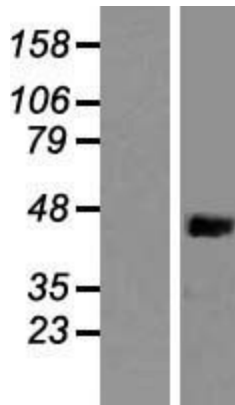
**MW:** 42.9 kDa

**Gene Summary:** The protein encoded by this gene is one of the signaling and transforming proteins containing Src homology 2 and 3 (SH2 and SH3) domains. It is located in the cytoplasm and is an adaptor protein involved in transducing signals from receptor tyrosine kinases to downstream signal recipients such as RAS. Alternatively spliced transcript variants encoding different isoforms have been found. [provided by RefSeq, Jun 2010]

Product images:



Circular map for RC202869



Western blot validation of overexpression lysate (Cat# [LY416832]) using anti-DDK antibody (Cat# [TA50011-100]). Left: Cell lysates from untransfected HEK293T cells; Right: Cell lysates from HEK293T cells transfected with RC202869 using transfection reagent MegaTran 2.0 (Cat# [TT210002]).