

Product datasheet for **RC202866**

SERINC3 (NM_198941) Human Tagged ORF Clone

Product data:

Product Type:	Expression Plasmids
Product Name:	SERINC3 (NM_198941) Human Tagged ORF Clone
Tag:	Myc-DDK
Symbol:	SERINC3
Synonyms:	AIGP1; DIFF33; SBBI99; TDE; TDE1; TMS-1
Mammalian Cell Selection:	Neomycin
Vector:	pCMV6-Entry (PS100001)
E. coli Selection:	Kanamycin (25 ug/mL)



[View online »](#)

ORF Nucleotide Sequence:

>RC202866 ORF sequence
 Red=Cloning site Blue=ORF Green=Tags(s)

TTTTGTAATACGACTCACTATAGGGCGGCCGGAATTCGTCGACTGGATCCGGTACCGAGGAGATCTGCC
 GCC**GCGATCGCC**

ATGGGGGCTGTGCTGGGTGTCTTCTCCCTCGCCAGCTGGGTTCCATGCCTCTGCAGCGGTGCCTCATGTT
 TGCTGTGTAGTTGCTGTCTTAACAGTAAGAATTCACGGTGACTCGCCTATTTATGCTTTCATTCTCT
 CCTGAGCACTGTCGTATCCTATATCATGCAGAGAAAAGAGATGAAACTTACTTGAAGAAGATTCCTGGA
 TTTTGTGAAGGGGATTTAAATCCATGAGGCTGATATAAATGCAGATAAAGATTGTGATGTGCTGGTTG
 GTTATAAAGCTGTGTATCGGATCAGCTTGGCCATGGCCATCTTTTTCTTTGTCTTTCTCTGCTCATGTT
 CAAAGTAAAAACAAGTAAAGATCTCCGAGCGGCAGTACACAATGGGTTTTGGTCTTCAAATTTGCTGCC
 CTTATTGGAATCATGGTTGGCTCTTCTACATCCCTGGGGCTATTTAGCTCAGCTGGTTTGTGTTG
 GCATGATAGGGGCGCCCTTTCATCCTCATTAGCTGGTGTGCTGGTAGATTTTGTCTATTCTTGAA
 TGATCATGGGTAATCGAATGGAAGAAGGAAACCAAGTTGTGGTATGCTGCTTACTGTCTTTCACA
 AGCGCCTTTTATATCCTGTCAATCATCTGTGTCGGGCTGCTCTATACATATTACACCAAACAGATGGCT
 GCACAGAAAACAAGTTCTTCATCAGTATTAACCTGATCCTTTGCGTTGTGGCTTCTATTATATCGATCCA
 CCCAAAAATTCAGGAACACCAGCCTCGCTCCGGCCTTTGCACTCCTCCCTCATCACCCTTACACTATG
 TACCTCACCTGGTCAGCCATGTCCAATGAACCTGATCGTTCCTGCAATCCCAACCTGATGAGCTTTATTA
 CACGCATAACTGCACCAACCCTGGCTCCTGGAAATCAACTGCTGTGGTCCCTACCCCTACTCCACCATC
 AAAGAGTGGGTCTTACTGGATTCAGATAATTTATTGGACTGTTGTCTTTGTCTCTGCTCTTGTAT
 TCTAGCATCCGCCTTCCACTAATAGCCAAGTAGACAAGCTGACCCTGTGAGGAGTGACAGCGTCATCC
 TTGGTGATACAACCTACCAGTGGTGCCAGTATGAAGAAGATGGACAGCCTCGGCGGCTGTGGACAACGA
 GAAAGAGGGAGTGCAAGTATAGTACTCCTTATTCCACCTCATGCTCTGCTTGGCTTCTTGTACATCATG
 ATGACCCTGACCAGCTGGTACAGCCCTGATGCAAAGTTTACAGAGCATGACCAGCAAGTGGCCAGCTGTG
 GGGTCAAGATCAGCTCCAGCTGGTCTGCTCCTGCTTACGCTCTGGACCCTTGTGGCTCCACTTGTCT
 CACCAGTCGGGACTTCAGC

ACGCGTACGCGGCGCTCGAGCAGAAACTCATCTCAGAAGAGGATCTGGCAGCAAATGATATCCTGGATT
 ACAAGGATGACGACGATAAGGTTTAA

Protein Sequence:

>RC202866 protein sequence
 Red=Cloning site Green=Tags(s)

MGAVLGVFSLASWVPCLSGASCLLCSCCPNSKNSTVTRLIYAFILLSTVVSYIMQRKEMETYLKIPG
 FCEGGFKIHEADINADKCDVLVGYKAVYRISFAMAIFFVFLMLFKVKTSKDLRAAVHNGFWFFKIAA
 LIGIMVGSFYIPGGYFSSVWFVGMIGAALFILIQVLVDFAHSWNESWVNRMEEGNPRWLWYAALLSFT
 SAFYILSIICVGLLYTYTYKPDGCTENKFFISINLILCVVASIISIHPKIQEHQPRSGLLQSSLITLYM
 YLTWSAMSNEPDRSCNPNLMSFITRITAPTLAPGNSTAVVPTPTPPSKSGSLDSDNFIGLFVFLCLLY
 SSIRTSTNSQVDKLTLSGSDSVILGDTTSGASDEEDGQPRRAVDNEKEGVQYSYSLFHLMLCLASLYIM
 MTLTSWYSPDAKFQSMTSKWPVAVVWKISSWVCLLLYVWTLVAPLVLSRDFS

TRTRPLEQKLISEEDLAANDILDYKDDDDKV

Chromatograms:

https://cdn.origene.com/chromatograms/mk6579_e10.zip

Restriction Sites:

Sgfl-MluI

Cloning Scheme:


ACCN: NM_198941

ORF Size: 1419 bp

OTI Disclaimer: The molecular sequence of this clone aligns with the gene accession number as a point of reference only. However, individual transcript sequences of the same gene can differ through naturally occurring variations (e.g. polymorphisms), each with its own valid existence. This clone is substantially in agreement with the reference, but a complete review of all prevailing variants is recommended prior to use. [More info](#)

OTI Annotation: This clone was engineered to express the complete ORF with an expression tag. Expression varies depending on the nature of the gene.

Components: The ORF clone is ion-exchange column purified and shipped in a 2D barcoded Matrix tube containing 10ug of transfection-ready, dried plasmid DNA (reconstitute with 100 ul of water).

- Reconstitution Method:**
1. Centrifuge at 5,000xg for 5min.
 2. Carefully open the tube and add 100ul of sterile water to dissolve the DNA.
 3. Close the tube and incubate for 10 minutes at room temperature.
 4. Briefly vortex the tube and then do a quick spin (less than 5000xg) to concentrate the liquid at the bottom.
 5. Store the suspended plasmid at -20°C. The DNA is stable for at least one year from date of shipping when stored at -20°C.

Note: Plasmids are not sterile. For experiments where strict sterility is required, filtration with 0.22um filter is required.

RefSeq: [NM_198941.2](#)

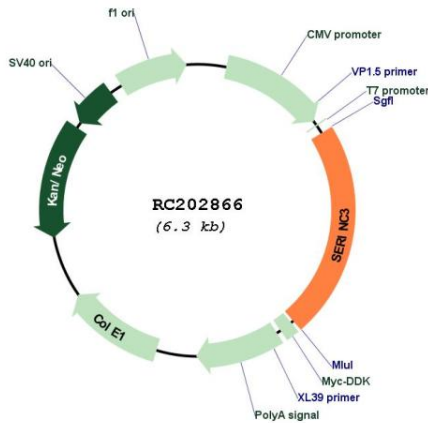
RefSeq Size: 1744 bp

RefSeq ORF: 1422 bp

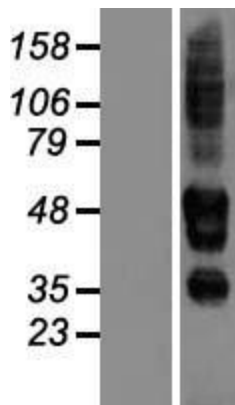
Locus ID: 10955

UniProt ID: [Q13530](#)
Cytogenetics: 20q13.12
Protein Families: Transmembrane
MW: 52.6 kDa
Gene Summary: Restriction factor required to restrict infectivity of lentiviruses, such as HIV-1: acts by inhibiting an early step of viral infection. Impairs the penetration of the viral particle into the cytoplasm (PubMed:26416733, PubMed:26416734).[UniProtKB/Swiss-Prot Function]

Product images:



Circular map for RC202866



Western blot validation of overexpression lysate (Cat# [LY404656]) using anti-DDK antibody (Cat# [TA50011-100]). Left: Cell lysates from untransfected HEK293T cells; Right: Cell lysates from HEK293T cells transfected with RC202866 using transfection reagent MegaTran 2.0 (Cat# [TT210002]).