

Product datasheet for **RC202858**

p60 CAF1 (CHAF1B) (NM_005441) Human Tagged ORF Clone

Product data:

Product Type:	Expression Plasmids
Product Name:	p60 CAF1 (CHAF1B) (NM_005441) Human Tagged ORF Clone
Tag:	Myc-DDK
Symbol:	p60 CAF1
Synonyms:	CAF-1; CAF-IP60; CAF1; CAF1A; CAF1P60; MPHOSPH7; MPP7
Mammalian Cell Selection:	Neomycin
Vector:	pCMV6-Entry (PS100001)
E. coli Selection:	Kanamycin (25 ug/mL)



[View online »](#)

ORF Nucleotide Sequence:

>RC202858 ORF sequence
 Red=Cloning site Blue=ORF Green=Tags(s)

TTTTGTAATACGACTCACTATAGGGCGGCCGGAATTCGTCGACTGGATCCGGTACCGAGGAGATCTGCC
 GCC**CGCATCGCC**

ATGAAAGTCATCACTTGTGAAATAGCCTGGCACAACAAGGAGCCCGTGTACAGCCTGGACTTCCAGCATG
 GGACGGCTGGGAGGATCCACAGACTGGCGTCTGCCGGCTGGACACCAATGTGAGGATCTGGAAGGTAGA
 AAAGGGACCAGATGGAAGCCATCGTGAATTTTTGTCCAATCTTGTCTGCATACCAAGCCGTCAT
 GTTGTGCGTTTTCTCCAAGTGGGAAATTTAGCATCGGAGGAGATGATGCTGTATCTATTGTGGA
 AGGTGAATGATAACAAGGAGCCGGAGCAGATCGCTTTTCAGGATGAGGACGAGGCCAGCTGAACAAGGA
 GAACTGGACGGTGTGAAGACTTGCAGGCTGCGGGCCACTTAGAAGATGTGTATGATATTTGCTGGCAACTGAT
 GGGAAATTAATGGCTTCTGCCTGTGGATAACACAGCCATCATATGGGATGTCAGCAAAGGACAAAAGA
 TATCAATTTTAAATGAACATAAAAGTTATGTCCAAGGAGTAACCTGGGACCCCTTTGGTCAATATGTTGC
 TACTCTGAGCTGTGACAGGGTGTGCGAGTATACAGTATACAGAAGAAGCGTGTGGCTTTCAATGTTTCG
 AAGATGCTGTCTGGAATAGGGGCTGAAGGAGAGGCAAGAAGCTACCGGATGTTTCACGACGACAGCATGA
 AGTCTTTCTCCGTAGACTGAGTTTCACTCCCGACGGATCTTTGCTTCTACGCCAGCTGGATGTGTGGA
 ATCTGGTGAAGTGAATGAATACCACTTATGTTTTCTCCAGGAAGAATCTAAAAGGCCATCGCTCAT
 CTTCCATGCTCTGGAAAAGCCACTTGTCTGTTGCTGTCCGGTCTACTTTGAACTGAGGCCAGTGG
 TGGAAACAGGTGTGGAGCTGATGAGTCTGCCCTACCGCTGGTGTGTTGCTGTGGCCTCGGAGGATTCCGT
 GCTTCTGTATGACACCCAGCAGTCTCCCTTTTGGTTACGTGTCTAATATACATTACCACACCCCTCAGT
 GACATTTTCAATGGTCCAGCGATGGTGCCTTCTCGCCATTTCTCCAGGACGGTACTGCTCATTTGTGA
 CATTGTGAGAAAGATGAACCTTGAATTCCTTTGAAAGAGAAGCCAGTTTTGAACATGAGAAGTCTGATAC
 AGCAAAGAAAACCAAGAGTCAGACACATCGAGGGTCTTCGCCAGGACCCAGACCGGTAGAGGGAACCCCT
 GCCAGCAGAACCAAGACCCAGCAGCCCGGCACGACTCCCTCAGAGCCAGACAGGCCCCAGCCCAA
 CAGTCATCAGGGACCCCTCCCTCCATCACTCCTGTGTCAAAGCCCTTGCAGGGCCTCGGAGGAGAA
 GACCCCTGCAGCCAGTAGTCAAACACAAAAGCCACCCATCCCGGAGGGTCACTCTGAACACACTGCAA
 GCCTGGAGCAAGACAACACCCCGGAGAATAAATTAACACCCCTAAAGACGGACTCCACCAAGTTCTG
 TACCAACCAAGTGTGATTTCCACCCCTTCTACAGAAGAAATTCAGTCAGAGACGCCTGGAGACGCTCAGGG
 CAGTCCCCAGAGCTAAAGCGGCCAGACTCGATGAAAACAAGGAGGCACGAAAGTCTGGACCT

ACGCGTACGCGGCCGCTCGAGCAGAAACTCATCTCAGAAGAGGATCTGGCAGCAAATGATATCCTGGATT
ACAAGGATGACGACGATAAGGTTTAA

Protein Sequence:

>RC202858 protein sequence
 Red=Cloning site Green=Tags(s)

MKVITCEIAWHNKEPVYSLDFQHGHTAGRIHRLASAGVDTNVRIWKVEKPGDKAIVEFLSNLARHTKAVN
 VVRFSPTEILASGGDDAVILLWKVNDNKEPEQIAFQDEDEAQLNKENWTVVKTLRGHLEDVYDIDCWATD
 GNLMASASVDNTAIIWDVSKGQKISIFNEHKSYYQGVTDPLGQYVATLSCDRVLRVYSIQKRVAFNVS
 KMLSGIGAEGEARSYRMFHDDSMKSFRRLLSFTPDGSLLLTPAGCVESGENVMNTTYVFSRKNLKRPIAH
 LPCPGKATLAVRCCPVYFELRPVETGVELMSLPYRLVFAVASEDSVLLYDTQQSFPFGYVSNIIHYHTLS
 DISWSSDGAFLAISSTDGYCSFVTFEKDELGIPLKEKPVLMRTPDTAKKTKSQTHRGSPPGPRPVEGTP
 ASRTQDPSSPGTTPPQARQAPAPTIVIRPPSITPAVKSPLPGPSEEKTLQPSQNTKAHPSRRVTLNLTQ
 AWSKTTPRRINLTPLKTDTPSSVPTSVISTPSTEEIQSETPGDAQGSPPELKRPRLDENKGGTESLDP

TRTRPLEQKLISEEDLAANDILDYKDDDDKV

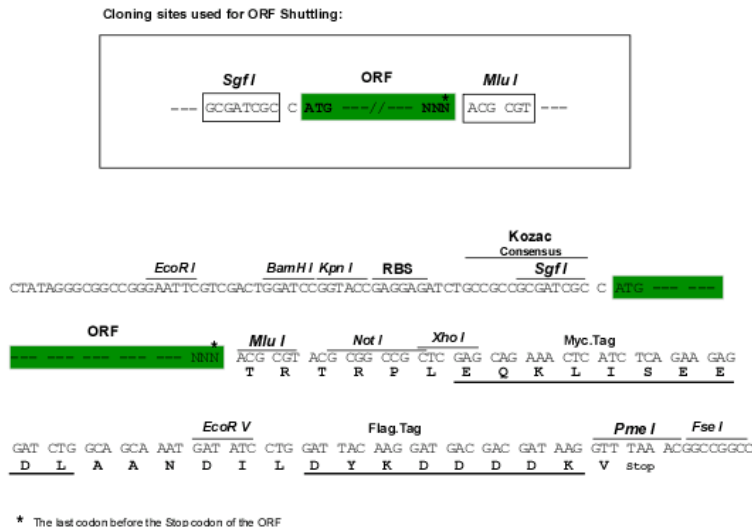
Chromatograms:

https://cdn.origene.com/chromatograms/mk6154_b03.zip

Restriction Sites:

Sgfl-MluI

Cloning Scheme:



ACCN: NM_005441

ORF Size: 1677 bp

OTI Disclaimer: The molecular sequence of this clone aligns with the gene accession number as a point of reference only. However, individual transcript sequences of the same gene can differ through naturally occurring variations (e.g. polymorphisms), each with its own valid existence. This clone is substantially in agreement with the reference, but a complete review of all prevailing variants is recommended prior to use. [More info](#)

OTI Annotation: This clone was engineered to express the complete ORF with an expression tag. Expression varies depending on the nature of the gene.

Components: The ORF clone is ion-exchange column purified and shipped in a 2D barcoded Matrix tube containing 10ug of transfection-ready, dried plasmid DNA (reconstitute with 100 ul of water).

Reconstitution Method:

1. Centrifuge at 5,000xg for 5min.
2. Carefully open the tube and add 100ul of sterile water to dissolve the DNA.
3. Close the tube and incubate for 10 minutes at room temperature.
4. Briefly vortex the tube and then do a quick spin (less than 5000xg) to concentrate the liquid at the bottom.
5. Store the suspended plasmid at -20°C. The DNA is stable for at least one year from date of shipping when stored at -20°C.

Note: Plasmids are not sterile. For experiments where strict sterility is required, filtration with 0.22um filter is required.

RefSeq: [NM_005441.3](#)

RefSeq Size: 2297 bp

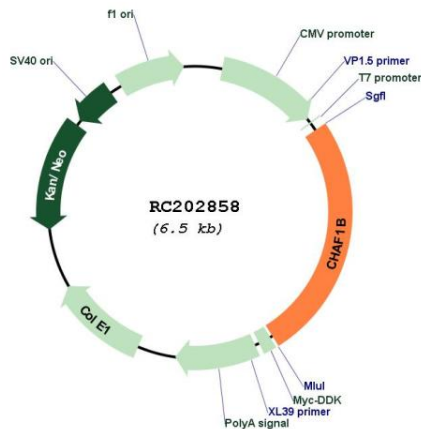
RefSeq ORF: 1680 bp

Locus ID: 8208

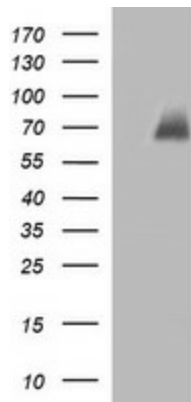
UniProt ID: [Q13112](#)
 Cytogenetics: 21q22.12-q22.13
 Domains: WD40
 Protein Families: Druggable Genome, Transcription Factors
 MW: 61.5 kDa
 Gene Summary:

Chromatin assembly factor I (CAF-I) is required for the assembly of histone octamers onto newly-replicated DNA. CAF-I is composed of three protein subunits, p50, p60, and p150. The protein encoded by this gene corresponds to the p60 subunit and is required for chromatin assembly after replication. The encoded protein is differentially phosphorylated in a cell cycle-dependent manner. In addition, it is normally found in the nucleus except during mitosis, when it is released into the cytoplasm. This protein is a member of the WD-repeat HIR1 family and may also be involved in DNA repair. [provided by RefSeq, Jul 2008]

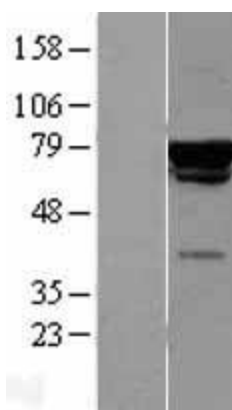
Product images:



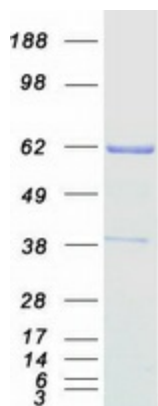
Circular map for RC202858



HEK293T cells were transfected with the pCMV6-ENTRY control (Cat# [PS100001], Left lane) or pCMV6-ENTRY CHAF1B (Cat# RC202858, Right lane) cDNA for 48 hrs and lysed. Equivalent amounts of cell lysates (5 ug per lane) were separated by SDS-PAGE and immunoblotted with anti-CHAF1B (Cat# [TA506840]). Positive lysates [LY401669] (100ug) and [LC401669] (20ug) can be purchased separately from OriGene.



Western blot validation of overexpression lysate (Cat# [LY401669]) using anti-DDK antibody (Cat# [TA50011-100]). Left: Cell lysates from untransfected HEK293T cells; Right: Cell lysates from HEK293T cells transfected with RC202858 using transfection reagent MegaTran 2.0 (Cat# [TT210002]).



Coomassie blue staining of purified CHAF1B protein (Cat# [TP302858]). The protein was produced from HEK293T cells transfected with CHAF1B cDNA clone (Cat# RC202858) using MegaTran 2.0 (Cat# [TT210002]).