

Product datasheet for **RC202857**

GNG3 (NM_012202) Human Tagged ORF Clone

Product data:

Product Type: Expression Plasmids
Product Name: GNG3 (NM_012202) Human Tagged ORF Clone
Tag: Myc-DDK
Symbol: GNG3
Mammalian Cell Selection: Neomycin
Vector: pCMV6-Entry (PS100001)
E. coli Selection: Kanamycin (25 ug/mL)
ORF Nucleotide Sequence: >RC202857 ORF sequence
Red=Cloning site Blue=ORF Green=Tags(s)

TTTTGTAATACGACTCACTATAGGGCGGCCGGAATTCGTCGACTGGATCCGGTACCGAGGAGATCTGCC
GCC**CGATCGCC**

ATGAAAGGTGAGACCCCGGTGAACAGCACTATGAGTATTGGGCAAGCACGCAAGATGGTGGAAACAGCTTA
AGATTGAAGCCAGCTTGTGTCGGATAAAGGTGTCCAAGGCAGCAGACCTGATGACTTACTGTGATGC
CCACGCCTGTGAGGATCCCCTCATCCCCTGTGCCACTTCGGAGAACCCTTCCGGGAGAAGAAGTTC
TTCTGTGCTCTCCTC

ACGCGTACGCGGCCGCTCGAGCAGAACTCATCTCAGAAGAGGATCTGGCAGCAAATGATATCCTGGATT
ACAAGGATGACGACGATAAGGTTTAA

Protein Sequence: >RC202857 protein sequence
Red=Cloning site Green=Tags(s)
MKGETPVNSTMSIGQARKMVEQLKIEASLCRIKVSAAAADLMTYCDAHACEDPLITPVPTSENPFREKKF
FCALL

TRTRPLEQKLISEEDLAANDILDYKDDDDKV

Chromatograms: https://cdn.origene.com/chromatograms/mk6436_h05.zip

Restriction Sites: SgfI-MluI



[View online »](#)

Cloning Scheme:


ACCN: NM_012202

ORF Size: 225 bp

OTI Disclaimer: The molecular sequence of this clone aligns with the gene accession number as a point of reference only. However, individual transcript sequences of the same gene can differ through naturally occurring variations (e.g. polymorphisms), each with its own valid existence. This clone is substantially in agreement with the reference, but a complete review of all prevailing variants is recommended prior to use. [More info](#)

OTI Annotation: This clone was engineered to express the complete ORF with an expression tag. Expression varies depending on the nature of the gene.

Components: The ORF clone is ion-exchange column purified and shipped in a 2D barcoded Matrix tube containing 10ug of transfection-ready, dried plasmid DNA (reconstitute with 100 ul of water).

Reconstitution Method:

1. Centrifuge at 5,000xg for 5min.
2. Carefully open the tube and add 100ul of sterile water to dissolve the DNA.
3. Close the tube and incubate for 10 minutes at room temperature.
4. Briefly vortex the tube and then do a quick spin (less than 5000xg) to concentrate the liquid at the bottom.
5. Store the suspended plasmid at -20°C. The DNA is stable for at least one year from date of shipping when stored at -20°C.

RefSeq: [NM_012202.5](#)

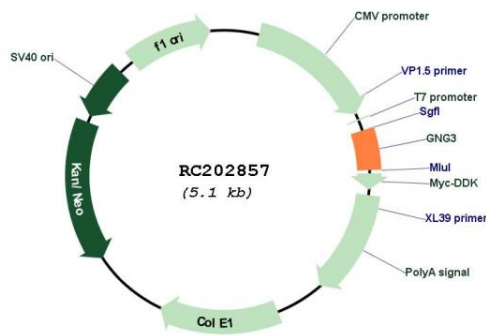
RefSeq Size: 962 bp

RefSeq ORF: 228 bp

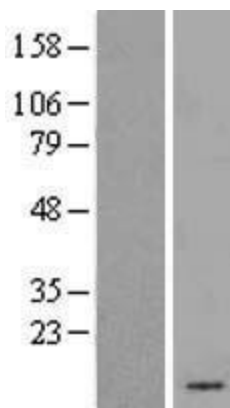
Locus ID: 2785
UniProt ID: [P63215](#)
Cytogenetics: 11q12.3
Domains: G-gamma
Protein Families: Druggable Genome
Protein Pathways: Chemokine signaling pathway, Taste transduction
MW: 8.3 kDa

Gene Summary: Guanine nucleotide binding proteins are heterotrimeric signal-transducing molecules consisting of alpha, beta, and gamma subunits. The gamma subunit determines the specificity of which signaling pathways will be affected by this particular complex. The protein encoded by this gene represents the gamma subunit of both inhibitory and stimulatory complexes. [provided by RefSeq, Jan 2012]

Product images:



Circular map for RC202857



Western blot validation of overexpression lysate (Cat# [LY415911]) using anti-DDK antibody (Cat# [TA50011-100]). Left: Cell lysates from untransfected HEK293T cells; Right: Cell lysates from HEK293T cells transfected with RC202857 using transfection reagent MegaTran 2.0 (Cat# [TT210002]).