

Product datasheet for RC202851

Hey L (HEYL) (NM_014571) Human Tagged ORF Clone

Product data:

Product Type:	Expression Plasmids
Product Name:	Hey L (HEYL) (NM_014571) Human Tagged ORF Clone
Tag:	Myc-DDK
Symbol:	Hey L
Synonyms:	bHLHb33; HESR3; HEY3; HRT3
Mammalian Cell Selection:	Neomycin
Vector:	pCMV6-Entry (PS100001)
E. coli Selection:	Kanamycin (25 ug/mL)
ORF Nucleotide Sequence:	>RC202851 ORF sequence Red=Cloning site Blue=ORF Green=Tags(s)

TTTGTGAATACGACTCACTATAGGGCGGCCGGAATTCGTCGACTGGATCCGGTACCGAGGAGATCTGCC
 GCCCGCATCGCC

ATGAAGCGACCCAAGGAGCCGAGCGGCTCCGACGGGGAGTCCGACGGACCCATCGACGTGGGCCAAGAGG
 GCCAGCTGAGCCAGATGGCCAGGCCGTGTCCACCCCGAGCTCTTCGAGATGCAAGCCAGGAAGAAACG
 CAGAGGGATCATAGAGAAACGGCGTCGAGACCGCATCAACAGTAGCCTTTCTGAATTGCGACGCTTGGTC
 CCCACTGCCTTTGAGAAACAGGGCTCTTCAAGCTGGAGAAAGCCGAGGTCTTGAGATGACGGTGGATC
 ACTTGAAATGCTCCATGCCACTGGTGGGACAGGATTCTTTGATGCCGAGCCCTGGCAGTTGACTTCCG
 GAGCATTGGTTTTCGGGAGTGCCTCACTGAGGTACATCAGGTACCTGGGGGTCTTGAAGGGCCAGCAGC
 CGTGACAGACCCCGTCCGATTGCGCTTCTCTCCACCTCAACAGCTACGCAGCCGAGATGGAGCCTTCGC
 CCACGCCCACTGGCCCTTTGGCCTTCCCTGCCTGGCCCTGGTCTTTCTTCCATAGCTGTCCAGGGCTGCC
 AGCCCTGAGCAACCAGCTCGCCATCCTGGGAAGAGTGCCAGCCCTGTCTCCCGGTGTCTCTCTCCT
 GTTACCCCATCCAGCCCTCCGAACCGCTCCCTTCGCAGAGCCACAGGCATCATCCTGCCAGCCCGGA
 GGAATGTGCTGCCAGTCGAGGGGCATCTTCAACCGGAGGGCCCGCCCTAGAGAGGCCAGCGACCCC
 TGTGCTGTGCCCCAGCAGAGGGCTGCCAGGAGCAGCCACATCGTCCCCTCCTGCAGTCTTCTCTCC
 CCAACACCCCTGGTCTACAGGGTCGGCTGCTTACGTGGCTGTCCACCCCAACTCATCTCCCCAG
 GGCCAGCTGGGAGGCCAGCGGGAGCCATGCTCTACCACTCCTGGGTCTCTGAAATCACTGAAATCGGGC
 TTTC

ACGCGTACGCGGCCGCTCGAGCAGAACTCATCTCAGAAGAGGATCTGGCAGCAAATGATATCCTGGATT
 ACAAGGATGACGACGATAAGGTTTAA


[View online »](#)

Protein Sequence: >RC202851 protein sequence
 Red=Cloning site Green=Tags(s)

MKRPKEPSGSDGESDGPIDVGQEGQLSQMARPLSTPSSSQMQRKRRGIIEKRRDRINSSLSELRLV
 PTAFKQGGSSKLEAEVLQMTVDHLKMLHATGGTGFFDARALAVDFRSIGFRECLTEVIRYLVLEGPS
 RADPVRIIRLLSHLNSYAAEMEPSPTPTGFLAFPAWPSFFHSCPLPALSNQLAILGRVPSVPLPGVSS
 AYPICALRTAPLRRATGIILPARRNVLPSRGASSTRRARPLERPATVPVAPSSRAARSSHIAPLLQSS
 PTPPGTGSAAYVAVPTPNSSSPGAPAGAMLYHSWVSEITEIGAF

TRTRPLEQKLISEEDLAANDILDYKDDDDKV

Chromatograms: https://cdn.origene.com/chromatograms/mk6233_h05.zip

Restriction Sites: SgfI-MluI

Cloning Scheme:



ACCN: NM_014571

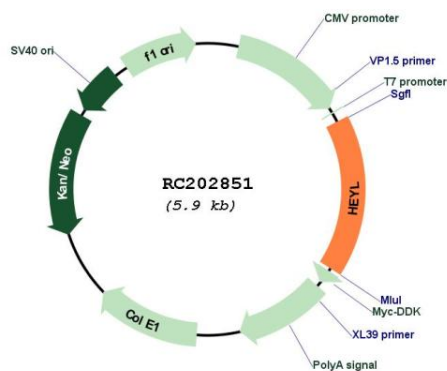
ORF Size: 984 bp

OTI Disclaimer: Due to the inherent nature of this plasmid, standard methods to replicate additional amounts of DNA in E. coli are highly likely to result in mutations and/or rearrangements. Therefore, OriGene does not guarantee the capability to replicate this plasmid DNA. Additional amounts of DNA can be purchased from OriGene with batch-specific, full-sequence verification at a reduced cost. Please contact our customer care team at custsupport@origene.com or by calling 301.340.3188 option 3 for pricing and delivery.

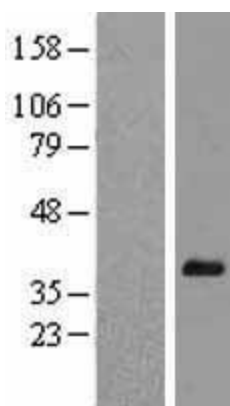
The molecular sequence of this clone aligns with the gene accession number as a point of reference only. However, individual transcript sequences of the same gene can differ through naturally occurring variations (e.g. polymorphisms), each with its own valid existence. This clone is substantially in agreement with the reference, but a complete review of all prevailing variants is recommended prior to use. [More info](#)

OTI Annotation:	This clone was engineered to express the complete ORF with an expression tag. Expression varies depending on the nature of the gene.
Components:	The ORF clone is ion-exchange column purified and shipped in a 2D barcoded Matrix tube containing 10ug of transfection-ready, dried plasmid DNA (reconstitute with 100 ul of water).
Reconstitution Method:	<ol style="list-style-type: none"> 1. Centrifuge at 5,000xg for 5min. 2. Carefully open the tube and add 100ul of sterile water to dissolve the DNA. 3. Close the tube and incubate for 10 minutes at room temperature. 4. Briefly vortex the tube and then do a quick spin (less than 5000xg) to concentrate the liquid at the bottom. 5. Store the suspended plasmid at -20°C. The DNA is stable for at least one year from date of shipping when stored at -20°C.
Note:	Plasmids are not sterile. For experiments where strict sterility is required, filtration with 0.22um filter is required.
RefSeq:	NM_014571.3
RefSeq Size:	4131 bp
RefSeq ORF:	987 bp
Locus ID:	26508
UniProt ID:	Q9NQ87
Cytogenetics:	1p34.2
Protein Families:	Druggable Genome, Transcription Factors
MW:	35.1 kDa
Gene Summary:	This gene encodes a member of the hairy and enhancer of split-related (HESR) family of basic helix-loop-helix (bHLH)-type transcription factors. The sequence of the encoded protein contains a conserved bHLH and orange domain, but its YRPW motif has diverged from other HESR family members. It is thought to be an effector of Notch signaling and a regulator of cell fate decisions. Alternatively spliced transcript variants have been found, but their biological validity has not been determined. [provided by RefSeq, Jul 2008]

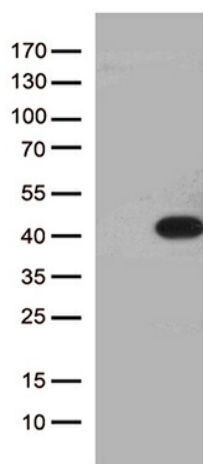
Product images:



Circular map for RC202851



Western blot validation of overexpression lysate (Cat# [LY415208]) using anti-DDK antibody (Cat# [TA50011-100]). Left: Cell lysates from un-transfected HEK293T cells; Right: Cell lysates from HEK293T cells transfected with RC202851 using transfection reagent MegaTran 2.0 (Cat# [TT210002]).



HEK293T cells were transfected with the pCMV6-ENTRY control (Cat# [PS100001], Left lane) or pCMV6-ENTRY HEYL (Cat# RC202851, Right lane) cDNA for 48 hrs and lysed. Equivalent amounts of cell lysates (5 ug per lane) were separated by SDS-PAGE and immunoblotted with anti-HEYL (Cat# [TA812473])(1:2000). Positive lysates [LY415208] (100ug) and [LC415208] (20ug) can be purchased separately from OriGene.